



SENP6 Polyclonal Antibody

Catalog No	YP-Ab-02782
Isotype	IgG
Reactivity	Human;Rat;Mouse;
Applications	IHC;IF;ELISA
Gene Name	SENP6
Protein Name	Sentrin-specific protease 6
Immunogen	The antiserum was produced against synthesized peptide derived from human SENP6. AA range:1042-1091
Specificity	SENP6 Polyclonal Antibody detects endogenous levels of SENP6 protein.
Formulation	Liquid in PBS containing 50% glycerol, 0.5% BSA and 0.02% sodium azide.
Source	Polyclonal, Rabbit,IgG
Purification	The antibody was affinity-purified from rabbit antiserum by affinity-chromatography using epitope-specific immunogen.
Dilution	IHC: 1/100 - 1/300. ELISA: 1/10000.. IF 1:50-200
Concentration	1 mg/ml
Purity	≥90%
Storage Stability	-20°C/1 year
Synonyms	SENP6; KIAA0797; SSP1; SUSP1; FKSG6; Sentrin-specific protease 6; SUMO-1-specific protease 1; Sentrin/SUMO-specific protease SENP6
Observed Band	
Cell Pathway	Nucleus .
Tissue Specificity	Highly expressed in reproductive organs, such as testis, ovary and prostate.
Function	function:Protease that deconjugates SUMO1, SUMO2 and SUMO3 from targeted proteins. Does not seem to be involved in the processing of full-length SUMO proteins to their mature forms. Deconjugates SUMO1 from RXRA, leading to transcriptional activation. May act preferentially on substrates containing 3 or more SUMO2 or SUMO3 moieties.,similarity:Belongs to the peptidase C48 family.,subunit:Interacts with RXRA.,tissue specificity:Highly expressed in reproductive organs, such as testis, ovary and prostate.,
Background	Ubiquitin-like molecules (UBLs), such as SUMO1 (UBL1; MIM 601912), are structurally related to ubiquitin (MIM 191339) and can be ligated to target proteins in a similar manner as ubiquitin. However, covalent attachment of UBLs does not result in degradation of the modified proteins. SUMO1 modification is implicated in the targeting of RANGAP1 (MIM 602362) to the nuclear pore complex, as well as in stabilization of I-kappa-B-alpha (NFKBIA; MIM 164008) from degradation by the 26S proteasome. Like ubiquitin, UBLs are synthesized as precursor proteins, with



1 or more amino acids following the C-terminal glycine-glycine residues of the mature UBL protein. Thus, the tail sequences of the UBL precursors need to be removed by UBL-specific proteases, such as SENP6, prior to their conjugation to target proteins (Kim et al., 2000 [PubMed 10799485]). SENPs also display isopeptidase activity for

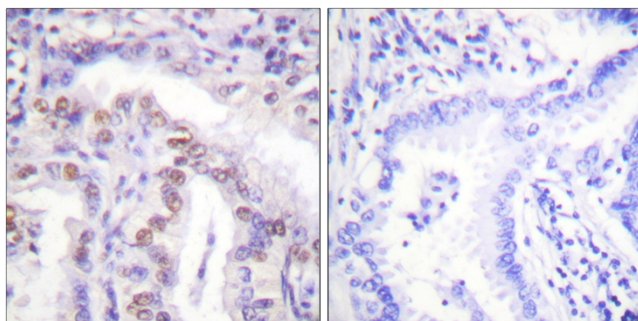
matters needing attention

Avoid repeated freezing and thawing!

Usage suggestions

This product can be used in immunological reaction related experiments. For more information, please consult technical personnel.

Products Images



Immunohistochemistry analysis of paraffin-embedded human lung carcinoma, using SENP6 Antibody. The picture on the right is blocked with the synthesized peptide.