



# SENP3 Polyclonal Antibody

<b>Catalog No</b>	YP-Ab-02780
<b>Isotype</b>	IgG
<b>Reactivity</b>	Human;Mouse
<b>Applications</b>	WB;IHC;IF;ELISA
<b>Gene Name</b>	SENP3
<b>Protein Name</b>	Sentrin-specific protease 3
<b>Immunogen</b>	The antiserum was produced against synthesized peptide derived from human SENP3. AA range:10-59
<b>Specificity</b>	SENP3 Polyclonal Antibody detects endogenous levels of SENP3 protein.
<b>Formulation</b>	Liquid in PBS containing 50% glycerol, 0.5% BSA and 0.02% sodium azide.
<b>Source</b>	Polyclonal, Rabbit,IgG
<b>Purification</b>	The antibody was affinity-purified from rabbit antiserum by affinity-chromatography using epitope-specific immunogen.
<b>Dilution</b>	WB: 1/500 - 1/2000. IHC: 1/100 - 1/300. ELISA: 1/5000.. IF 1:50-200
<b>Concentration</b>	1 mg/ml
<b>Purity</b>	≥90%
<b>Storage Stability</b>	-20°C/1 year
<b>Synonyms</b>	SENP3; SSP3; SUSP3; Sentrin-specific protease 3; SUMO-1-specific protease 3; Sentrin/SUMO-specific protease SENP3
<b>Observed Band</b>	80kD
<b>Cell Pathway</b>	Nucleus, nucleolus . Nucleus, nucleoplasm . Cytoplasm . Redistributes between the nucleolus and the nucleoplasm in response to mild oxidative stress (PubMed:19680224). Mainly found in the nucleoplasm, with low levels detected in the cytoplasmic and chromatin fractions (By similarity). .
<b>Tissue Specificity</b>	Epithelium,Lymph,Melanoma,Uterus,
<b>Function</b>	function:Protease that releases SUMO2 and SUMO3 monomers from sumoylated substrates, but has only weak activity against SUMO1 conjugates. Deconjugates SUMO2 from MEF2D, which increases its transcriptional activation capability.,similarity:Belongs to the peptidase C48 family.,subunit:Binds to UBL1 and SMT3H1.,
<b>Background</b>	The reversible posttranslational modification of proteins by the addition of small ubiquitin-like SUMO proteins (see SUMO1; MIM 601912) is required for numerous biologic processes. SUMO-specific proteases, such as SENP3, are responsible for the initial processing of SUMO precursors to generate a C-terminal diglycine motif required for the conjugation reaction. They also have isopeptidase activity for the removal of SUMO from high molecular mass SUMO conjugates (Di Bacco



et al., 2006 [PubMed 16738315]).[supplied by OMIM, Jun 2009],

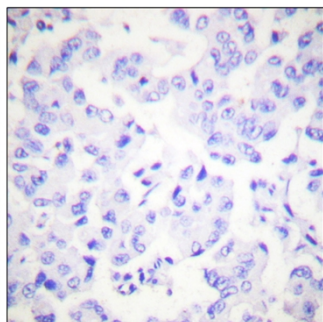
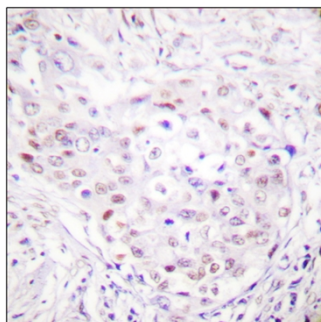
**matters needing attention**

Avoid repeated freezing and thawing!

**Usage suggestions**

This product can be used in immunological reaction related experiments. For more information, please consult technical personnel.

**Products Images**



Immunohistochemistry analysis of paraffin-embedded human breast carcinoma tissue, using SENP3 Antibody. The picture on the right is blocked with the synthesized peptide.