



SENP1 Polyclonal Antibody

Catalog No	YP-Ab-02778
Isotype	IgG
Reactivity	Human;Mouse
Applications	WB;IHC;IF;ELISA
Gene Name	SENP1
Protein Name	Sentrin-specific protease 1
Immunogen	The antiserum was produced against synthesized peptide derived from human SENP1. AA range:1-50
Specificity	SENP1 Polyclonal Antibody detects endogenous levels of SENP1 protein.
Formulation	Liquid in PBS containing 50% glycerol, 0.5% BSA and 0.02% sodium azide.
Source	Polyclonal, Rabbit,IgG
Purification	The antibody was affinity-purified from rabbit antiserum by affinity-chromatography using epitope-specific immunogen.
Dilution	WB: 1/500 - 1/2000. IHC: 1/100 - 1/300. ELISA: 1/20000.. IF 1:50-200
Concentration	1 mg/ml
Purity	≥90%
Storage Stability	-20°C/1 year
Synonyms	SENP1; Sentrin-specific protease 1; Sentrin/SUMO-specific protease SENP1
Observed Band	73kD
Cell Pathway	Nucleus . Cytoplasm. Shuttles between cytoplasm and nucleus.
Tissue Specificity	Highly expressed in testis. Expressed at lower levels in thymus, pancreas, spleen, liver, ovary and small intestine.
Function	function:Protease that catalyzes two essential functions in the SUMO pathway: processing of full-length SUMO1, SUMO2 and SUMO3 to their mature forms and deconjugation of SUMO1, SUMO2 and SUMO3 from targeted proteins. Deconjugates SUMO1 from HIPK2. Deconjugates SUMO1 from HDAC1, which decreases its transcriptional repression activity.,similarity:Belongs to the peptidase C48 family.,subcellular location:Shuttles between cytoplasm and nucleus.,tissue specificity:Highly expressed in testis. Expressed at lower levels in thymus, pancreas, spleen, liver, ovary and small intestine.,
Background	This gene encodes a cysteine protease that specifically targets members of the small ubiquitin-like modifier (SUMO) protein family. This protease regulates SUMO pathways by deconjugating sumoylated proteins. This protease also functions to process the precursor SUMO proteins into their mature form. Alternate splicing results in multiple transcript variants. [provided by RefSeq, Jun 2012],



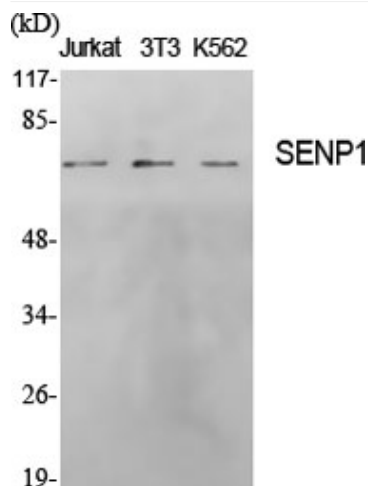
matters needing attention

Avoid repeated freezing and thawing!

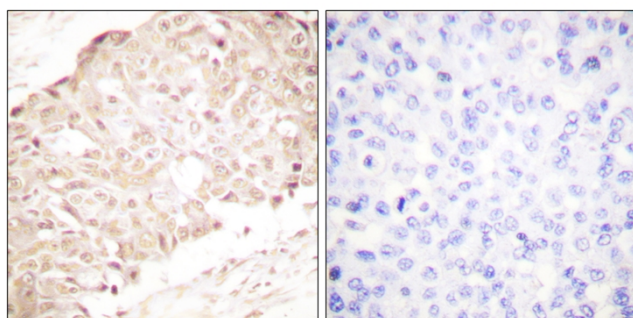
Usage suggestions

This product can be used in immunological reaction related experiments. For more information, please consult technical personnel.

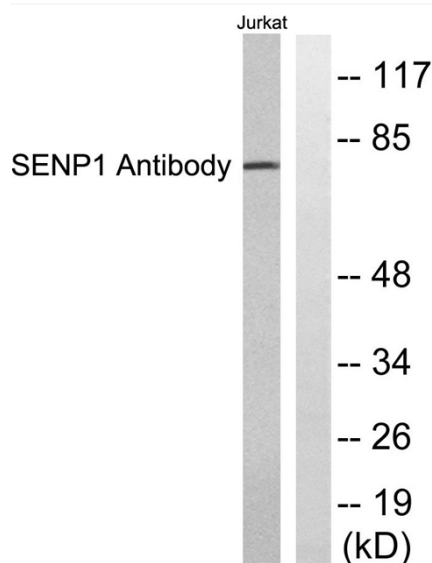
Products Images



Western Blot analysis of various cells using SENP1 Polyclonal Antibody



Immunohistochemistry analysis of paraffin-embedded human breast carcinoma tissue, using SENP1 Antibody. The picture on the right is blocked with the synthesized peptide.



Western blot analysis of lysates from Jurkat cells, using SENP1 Antibody. The lane on the right is blocked with the synthesized peptide.