

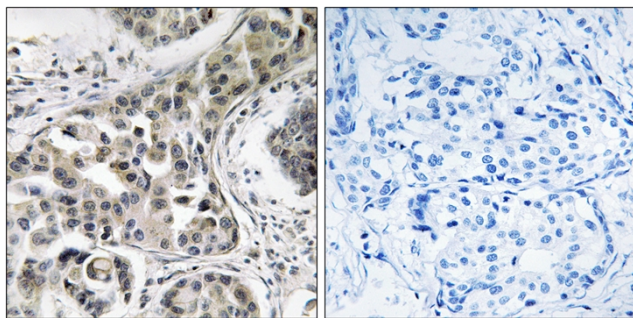


RN-tre Polyclonal Antibody

Catalog No	YP-Ab-02774
Isotype	IgG
Reactivity	Human;Rat;Mouse;
Applications	IHC;IF;ELISA
Gene Name	USP6NL
Protein Name	USP6 N-terminal-like protein
Immunogen	The antiserum was produced against synthesized peptide derived from human USP6NL. AA range:451-500
Specificity	RN-tre Polyclonal Antibody detects endogenous levels of RN-tre protein.
Formulation	Liquid in PBS containing 50% glycerol, 0.5% BSA and 0.02% sodium azide.
Source	Polyclonal, Rabbit,IgG
Purification	The antibody was affinity-purified from rabbit antiserum by affinity-chromatography using epitope-specific immunogen.
Dilution	IHC: 1/100 - 1/300. ELISA: 1/10000.. IF 1:50-200
Concentration	1 mg/ml
Purity	≥90%
Storage Stability	-20°C/1 year
Synonyms	USP6NL; KIAA0019; USP6 N-terminal-like protein; Related to the N-terminus of tre; RN-tre
Observed Band	
Cell Pathway	Golgi apparatus. Cytoplasmic vesicle.
Tissue Specificity	Widely expressed.
Function	function:Acts as a GTPase-activating protein for RAB5A. Involved in receptor trafficking. In complex with EPS8 inhibits internalization of EGFR.,PTM:Phosphorylated upon DNA damage, probably by ATM or ATR.,similarity:Contains 1 Rab-GAP TBC domain.,subunit:Interacts with EPS8.,tissue specificity:Widely expressed.,
Background	function:Acts as a GTPase-activating protein for RAB5A. Involved in receptor trafficking. In complex with EPS8 inhibits internalization of EGFR.,PTM:Phosphorylated upon DNA damage, probably by ATM or ATR.,similarity:Contains 1 Rab-GAP TBC domain.,subunit:Interacts with EPS8.,tissue specificity:Widely expressed.,
matters needing attention	Avoid repeated freezing and thawing!

Usage suggestions

This product can be used in immunological reaction related experiments. For more information, please consult technical personnel.

Products Images

Immunohistochemistry analysis of paraffin-embedded human breast carcinoma, using USP6NL Antibody. The picture on the right is blocked with the synthesized peptide.