



RAP1 Polyclonal Antibody

Catalog No	YP-Ab-02772
Isotype	IgG
Reactivity	Human;Rat;Mouse;
Applications	WB;IHC
Gene Name	TERF2IP
Protein Name	Telomeric repeat-binding factor 2-interacting protein 1
Immunogen	The antiserum was produced against synthesized peptide derived from human RAP1. AA range:203-252
Specificity	RAP1 Polyclonal Antibody detects endogenous levels of RAP1 protein.
Formulation	Liquid in PBS containing 50% glycerol, 0.5% BSA and 0.02% sodium azide.
Source	Polyclonal, Rabbit,IgG
Purification	The antibody was affinity-purified from rabbit antiserum by affinity-chromatography using epitope-specific immunogen.
Dilution	WB 1:500-2000;IHC-p 1:50-300
Concentration	1 mg/ml
Purity	≥90%
Storage Stability	-20°C/1 year
Synonyms	TERF2IP; DRIP5; RAP1; PP8000; Telomeric repeat-binding factor 2-interacting protein 1; TERF2-interacting telomeric protein 1; TRF2-interacting telomeric protein 1; Dopamine receptor-interacting protein 5; Repressor/activator protein 1 homol
Observed Band	55kD
Cell Pathway	Nucleus . Cytoplasm . Chromosome . Chromosome, telomere . Associates with chromosomes, both at telomeres and in extratelomeric sites. Also exists as a cytoplasmic form, where it associates with the IKK complex. .
Tissue Specificity	Ubiquitous. Highly expressed.
Function	function:May play a role in telomere length regulation. Component of the shelterin complex (telosome) that is involved in the regulation of telomere length and protection. Shelterin associates with arrays of double-stranded TTAGGG repeats added by telomerase and protects chromosome ends; without its protective activity, telomeres are no longer hidden from the DNA damage surveillance and chromosome ends are inappropriately processed by DNA repair pathways.,miscellaneous:Recruited to telomeres by TRF2; seemingly it does not directly bind to DNA itself.,PTM:Phosphorylated upon DNA damage, probably by ATM or ATR.,sequence caution:Translated as Glu.,similarity:Contains 1 BRCT domain.,similarity:Contains 1 Myb-like domain.,subcellular location:Colocalizes

with telomeric DNA in interphase and metaphase cells.,subunit:Homodimer.
Component of the shelterin complex (telosome) composed of TERF1, TE

Background

The gene encodes a protein that is part of a complex involved in telomere length regulation. Pseudogenes are present on chromosomes 5 and 22. [provided by RefSeq, Apr 2010],

matters needing attention

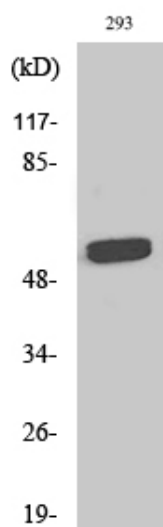
Avoid repeated freezing and thawing!

Usage suggestions

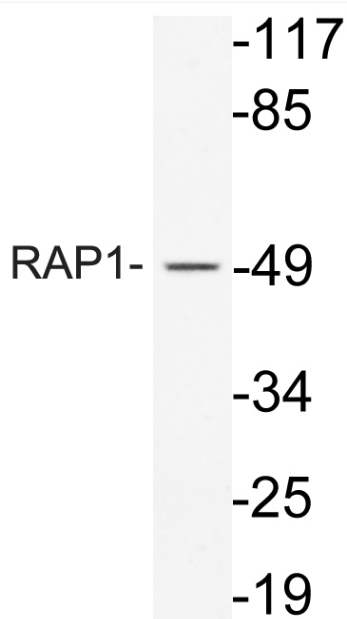
This product can be used in immunological reaction related experiments. For more information, please consult technical personnel.



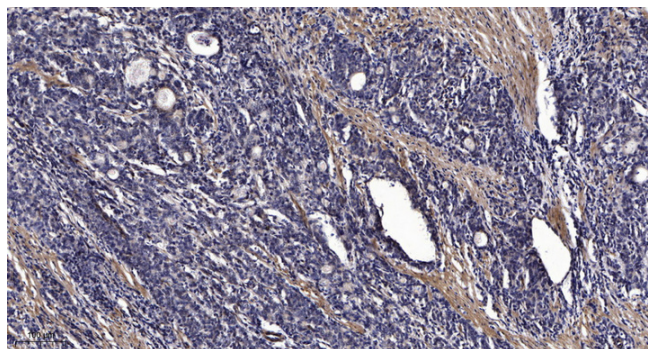
Products Images



Western Blot analysis of various cells using RAP1 Polyclonal Antibody diluted at 1:500



Western blot analysis of lysate from 293 cells, using RAP1 antibody.



Immunohistochemical analysis of paraffin-embedded human Gastric adenocarcinoma. 1, Antibody was diluted at 1:200(4° overnight). 2, Tris-EDTA,pH9.0 was used for antigen retrieval. 3,Secondary antibody was diluted at 1:200(room temperature, 45min).