



PGE synthase Polyclonal Antibody

Catalog No	YP-Ab-02749
Isotype	IgG
Reactivity	Human;Mouse;Rat
Applications	WB;ELISA;IHC
Gene Name	PTGES
Protein Name	Prostaglandin E synthase
Immunogen	The antiserum was produced against synthesized peptide derived from human PGE synthase. AA range:30-79
Specificity	PGE synthase Polyclonal Antibody detects endogenous levels of PGE synthase protein.
Formulation	Liquid in PBS containing 50% glycerol, 0.5% BSA and 0.02% sodium azide.
Source	Polyclonal, Rabbit,IgG
Purification	The antibody was affinity-purified from rabbit antiserum by affinity-chromatography using epitope-specific immunogen.
Dilution	WB 1:500-2000;IHC-p 1:50-300; ELISA 2000-20000
Concentration	1 mg/ml
Purity	≥90%
Storage Stability	-20°C/1 year
Synonyms	PTGES; MGST1L1; MPGES1; PGES; PIG12; Prostaglandin E synthase; Microsomal glutathione S-transferase 1-like 1; MGST1-L1; Microsomal prostaglandin E synthase 1; MPGES-1; p53-induced gene 12 protein
Observed Band	17kD
Cell Pathway	Membrane ; Multi-pass membrane protein . Cytoplasm, perinuclear region . Colocalizes with PTGS1/COX-1 and PTGS2/COX-2 in the perinuclear compartment. .
Tissue Specificity	Breast,Colon cancer,Pancreas,
Function	catalytic activity:(5Z,13E)-(15S)-9-α,11-α-epidioxy-15-hydroxyprosta-5,13-dienoate = (5Z,13E)-(15S)-11-α,15-dihydroxy-9-oxoprosta-5,13-dienoate.,induction:By TP53/p53.,similarity:Belongs to the MAPEG family.,subunit:Homotrimer.,
Background	prostaglandin E synthase(PTGES) Homo sapiens The protein encoded by this gene is a glutathione-dependent prostaglandin E synthase. The expression of this gene has been shown to be induced by proinflammatory cytokine interleukin 1 beta (IL1B). Its expression can also be induced by tumor suppressor protein TP53, and may be involved in TP53 induced apoptosis. Knockout studies in mice suggest that this gene may contribute to the pathogenesis of collagen-induced

arthritis and mediate acute pain during inflammatory responses. [provided by RefSeq, Jul 2008],

matters needing attention

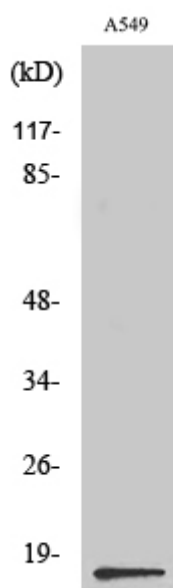
Avoid repeated freezing and thawing!

Usage suggestions

This product can be used in immunological reaction related experiments. For more information, please consult technical personnel.



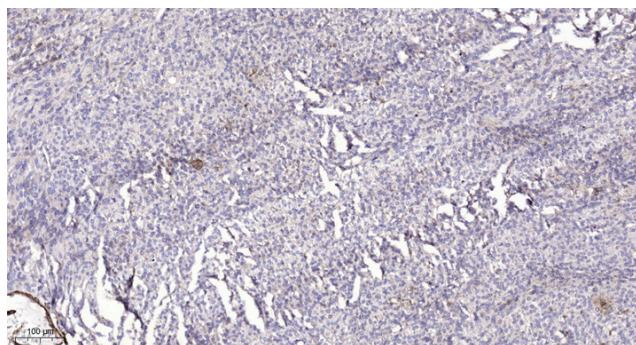
Products Images



Western Blot analysis of various cells using PGE synthase Polyclonal Antibody diluted at 1:500



Western blot analysis of lysate from A549 cells, using PGE synthase antibody.



Immunohistochemical analysis of paraffin-embedded human Colon cancer. 1, Antibody was diluted at 1:200(4° overnight). 2, Tris-EDTA,pH9.0 was used for antigen retrieval. 3,Secondary antibody was diluted at 1:200(room temperature, 45min).