



# Pepsin C Polyclonal Antibody

<b>Catalog No</b>	YP-Ab-02747
<b>Isotype</b>	IgG
<b>Reactivity</b>	Human;Rat;Mouse;
<b>Applications</b>	WB;IHC;IF;ELISA
<b>Gene Name</b>	PGC
<b>Protein Name</b>	Gastricsin
<b>Immunogen</b>	The antiserum was produced against synthesized peptide derived from human Pepsin C. AA range:257-306
<b>Specificity</b>	Pepsin C Polyclonal Antibody detects endogenous levels of Pepsin C protein.
<b>Formulation</b>	Liquid in PBS containing 50% glycerol, 0.5% BSA and 0.02% sodium azide.
<b>Source</b>	Polyclonal, Rabbit,IgG
<b>Purification</b>	The antibody was affinity-purified from rabbit antiserum by affinity-chromatography using epitope-specific immunogen.
<b>Dilution</b>	WB: 1/500 - 1/2000. IHC: 1/100 - 1/300. ELISA: 1/40000.. IF 1:50-200
<b>Concentration</b>	1 mg/ml
<b>Purity</b>	≥90%
<b>Storage Stability</b>	-20°C/1 year
<b>Synonyms</b>	PGC; Gastricsin; Pepsinogen C
<b>Observed Band</b>	42kD
<b>Cell Pathway</b>	Secreted.
<b>Tissue Specificity</b>	Brain,Liver,Placenta,Stomach,
<b>Function</b>	catalytic activity:More restricted specificity than pepsin A, but shows preferential cleavage at Tyr-I-Xaa bonds. High activity on hemoglobin.,function:Hydrolyzes a variety of proteins.,similarity:Belongs to the peptidase A1 family.,
<b>Background</b>	This gene encodes an aspartic proteinase that belongs to the peptidase family A1. The encoded protein is a digestive enzyme that is produced in the stomach and constitutes a major component of the gastric mucosa. This protein is also secreted into the serum. This protein is synthesized as an inactive zymogen that includes a highly basic prosegment. This enzyme is converted into its active mature form at low pH by sequential cleavage of the prosegment that is carried out by the enzyme itself. Polymorphisms in this gene are associated with susceptibility to gastric cancers. Serum levels of this enzyme are used as a biomarker for certain gastric diseases including Helicobacter pylori related gastritis. Alternate splicing results in multiple transcript variants. A pseudogene of this gene is found on chromosome 1. [provided by RefSeq, Oct 2009],

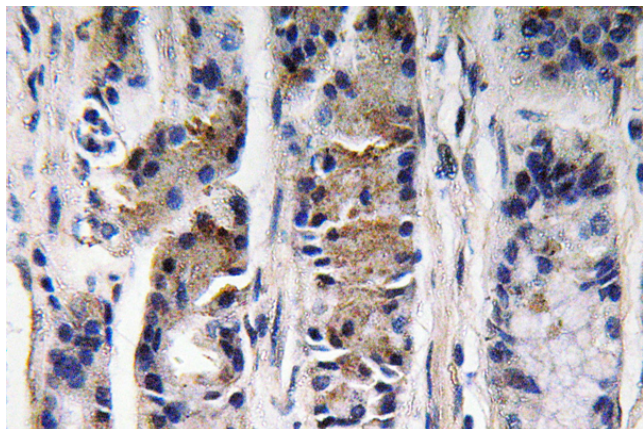
**matters needing attention**

Avoid repeated freezing and thawing!

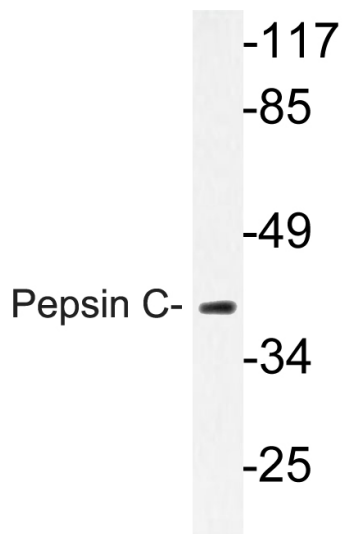
**Usage suggestions**

This product can be used in immunological reaction related experiments. For more information, please consult technical personnel.

## Products Images



Immunohistochemistry analysis of Pepsin C antibody in paraffin-embedded human lung carcinoma tissue.



Western blot analysis of lysate from Jurkat cells, using Pepsin C antibody.