



# PC-PLD4 Polyclonal Antibody

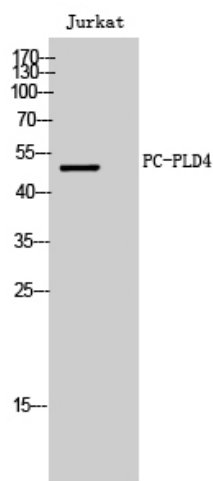
|                                  |  |
|----------------------------------|--|
| <b>Catalog No</b>                | YP-Ab-02738  |
| <b>Isotype</b>                   | IgG  |
| <b>Reactivity</b>                | Human;Mouse;Rat  |
| <b>Applications</b>              | WB;IHC   |
| <b>Gene Name</b>                 | PLD4   |
| <b>Protein Name</b>              | Phospholipase D4   |
| <b>Immunogen</b>                 | The antiserum was produced against synthesized peptide derived from human PLD4. AA range:457-506   |
| <b>Specificity</b>               | PC-PLD4 Polyclonal Antibody detects endogenous levels of PC-PLD4 protein.  |
| <b>Formulation</b>               | Liquid in PBS containing 50% glycerol, 0.5% BSA and 0.02% sodium azide.  |
| <b>Source</b>                    | Polyclonal, Rabbit,IgG   |
| <b>Purification</b>              | The antibody was affinity-purified from rabbit antiserum by affinity-chromatography using epitope-specific immunogen.  |
| <b>Dilution</b>                  | WB 1:500-2000;IHC-p 1:50-300   |
| <b>Concentration</b>             | 1 mg/ml  |
| <b>Purity</b>                    | ≥90%   |
| <b>Storage Stability</b>         | -20°C/1 year   |
| <b>Synonyms</b>                  | PLD4; C14orf175; Phospholipase D4; PLD 4; Choline phosphatase 4; Phosphatidylcholine-hydrolyzing phospholipase D4  |
| <b>Observed Band</b>             | 50kD   |
| <b>Cell Pathway</b>              | Endoplasmic reticulum membrane ; Single-pass type II membrane protein . Golgi apparatus, trans-Golgi network membrane ; Single-pass type II membrane protein . Nucleus . Early endosome . Cytoplasmic vesicle, phagosome . Activation of microglia induces translocation of PLD4 from the nucleus to the phagosomes. . |
| <b>Tissue Specificity</b>        | B-cell,T-cell,   |
| <b>Function</b>                  | catalytic activity:A phosphatidylcholine + H(2)O = choline + a phosphatidate.,similarity:Belongs to the phospholipase D family.,similarity:Contains 2 PLD phosphodiesterase domains.,  |
| <b>Background</b>                | catalytic activity:A phosphatidylcholine + H(2)O = choline + a phosphatidate.,similarity:Belongs to the phospholipase D family.,similarity:Contains 2 PLD phosphodiesterase domains.,  |
| <b>matters needing attention</b> | Avoid repeated freezing and thawing!   |



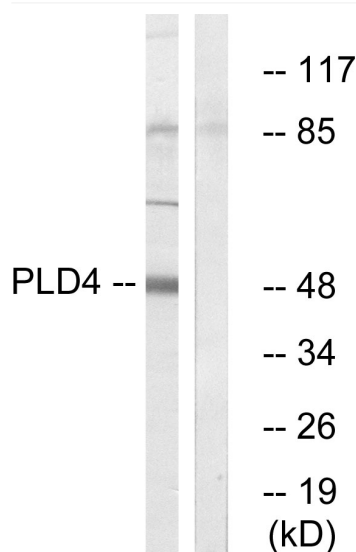
## Usage suggestions

This product can be used in immunological reaction related experiments. For more information, please consult technical personnel.

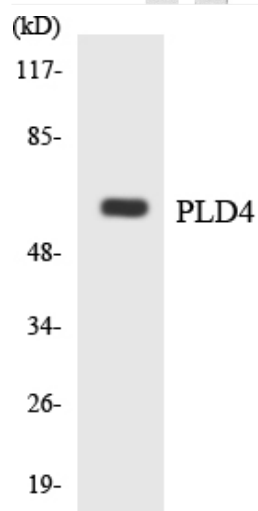
## Products Images



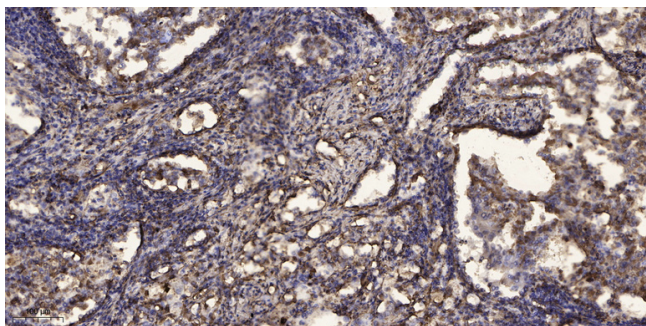
Western Blot analysis of Jurkat cells using PC-PLD4 Polyclonal Antibody



Western blot analysis of lysates from Jurkat cells, using PLD4 Antibody. The lane on the right is blocked with the synthesized peptide.



Western blot analysis of the lysates from K562 cells using PLD4 antibody.



Immunohistochemical analysis of paraffin-embedded human Squamous cell carcinoma of lung. 1, Antibody was diluted at 1:200(4° overnight). 2, Tris-EDTA,pH9.0 was used for antigen retrieval. 3,Secondary antibody was diluted at 1:200(room temperature, 45min).