



PC-PLD3 Polyclonal Antibody

Catalog No	YP-Ab-02737
Isotype	IgG
Reactivity	Human;Mouse;Rat
Applications	IHC;IF;ELISA
Gene Name	PLD3
Protein Name	Phospholipase D3
Immunogen	The antiserum was produced against synthesized peptide derived from human PLD3. AA range:326-375
Specificity	PC-PLD3 Polyclonal Antibody detects endogenous levels of PC-PLD3 protein.
Formulation	Liquid in PBS containing 50% glycerol, 0.5% BSA and 0.02% sodium azide.
Source	Polyclonal, Rabbit,IgG
Purification	The antibody was affinity-purified from rabbit antiserum by affinity-chromatography using epitope-specific immunogen.
Dilution	IHC: 1/100 - 1/300. ELISA: 1/5000.. IF 1:50-200
Concentration	1 mg/ml
Purity	≥90%
Storage Stability	-20°C/1 year
Synonyms	PLD3; Phospholipase D3; PLD 3; Choline phosphatase 3; HindIII K4L homolog; Hu-K4; Phosphatidylcholine-hydrolyzing phospholipase D3
Observed Band	
Cell Pathway	Endoplasmic reticulum membrane ; Single-pass type II membrane protein . Lysosome lumen . Early endosome membrane ; Single-pass type II membrane protein . Late endosome membrane ; Single-pass type II membrane protein . Golgi apparatus membrane ; Single-pass type II membrane protein . Endosome membrane ; Single-pass type II membrane protein . Localizes to ER-associated vesicles in differentiating myotubes (PubMed:22428023). The soluble form in lysosome arises by proteolytic processing of the membrane-bound form (PubMed:29386126). Colocalizes with APP in endosomes (PubMed:29368044). .
Tissue Specificity	Widely expressed. In the brain, high levels of expression are detected in the frontal, temporal and occipital cortices and hippocampus. Expressed at low level in corpus callosum.
Function	catalytic activity:A phosphatidylcholine + H(2)O = choline + a phosphatidate.,PTM:Glycosylated.,similarity:Belongs to the phospholipase D family.,similarity:Contains 2 PLD phosphodiesterase domains.,tissue specificity:Widely expressed. Expressed at higher level in brain. Expressed at low level in corpus callosum, suggesting that it is highly expressed in neurons.,



Background

This gene encodes a member of the phospholipase D (PLD) family of enzymes that catalyze the hydrolysis of membrane phospholipids. The encoded protein is a single-pass type II membrane protein and contains two PLD phosphodiesterase domains. This protein influences processing of amyloid-beta precursor protein. Mutations in this gene are associated with Alzheimer disease risk. Alternatively spliced transcript variants encoding the same protein have been found for this gene. [provided by RefSeq, Apr 2014],

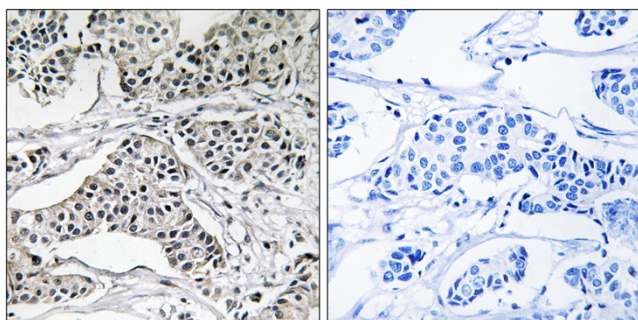
matters needing attention

Avoid repeated freezing and thawing!

Usage suggestions

This product can be used in immunological reaction related experiments. For more information, please consult technical personnel.

Products Images



Immunohistochemistry analysis of paraffin-embedded human breast carcinoma tissue, using PLD3 Antibody. The picture on the right is blocked with the synthesized peptide.