



PC-PLD2 Polyclonal Antibody

Catalog No	YP-Ab-02736
Isotype	IgG
Reactivity	Human;Mouse;Rat
Applications	WB;ELISA;IHC
Gene Name	PLD2
Protein Name	Phospholipase D2
Immunogen	Synthesized peptide derived from PC-PLD2 . at AA range: 110-190
Specificity	PC-PLD2 Polyclonal Antibody detects endogenous levels of PC-PLD2 protein.
Formulation	Liquid in PBS containing 50% glycerol, 0.5% BSA and 0.02% sodium azide.
Source	Polyclonal, Rabbit,IgG
Purification	The antibody was affinity-purified from rabbit antiserum by affinity-chromatography using epitope-specific immunogen.
Dilution	WB 1:500-2000;IHC-p 1:50-300; ELISA 2000-20000
Concentration	1 mg/ml
Purity	≥90%
Storage Stability	-20°C/1 year
Synonyms	PLD2; Phospholipase D2; PLD 2; hPLD2; Choline phosphatase 2; PLD1C; Phosphatidylcholine-hydrolyzing phospholipase D2
Observed Band	106kD
Cell Pathway	Cell membrane ; Lipid-anchor .
Tissue Specificity	Ubiquitous.
Function	catalytic activity:A phosphatidylcholine + H(2)O = choline + a phosphatidate.,enzyme regulation:Stimulated by phosphatidylinositol 4,5-bisphosphate and activated by the ADP-ribosylation factor-1 (ARF-1).,function:May have a role in signal-induced cytoskeletal regulation and/or endocytosis.,online information:Phospholipase D entry,similarity:Belongs to the phospholipase D family.,similarity:Contains 1 PH domain.,similarity:Contains 1 PX (phox homology) domain.,similarity:Contains 2 PLD phosphodiesterase domains.,subunit:Interacts with EGFR (By similarity). Interacts with PIP5K1A.,tissue specificity:Ubiquitous.,
Background	The protein encoded by this gene catalyzes the hydrolysis of phosphatidylcholine to phosphatidic acid and choline. The activity of the encoded enzyme is enhanced by phosphatidylinositol 4,5-bisphosphate and ADP-ribosylation factor-1. This protein localizes to the peripheral membrane and may be involved in cytoskeletal organization, cell cycle control, transcriptional regulation, and/or regulated

secretion. Two transcript variants encoding different isoforms have been found for this gene.[provided by RefSeq, Jul 2011],

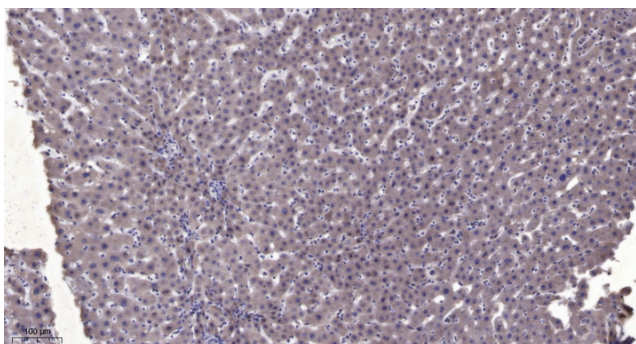
matters needing attention

Avoid repeated freezing and thawing!

Usage suggestions

This product can be used in immunological reaction related experiments. For more information, please consult technical personnel.

Products Images



Immunohistochemical analysis of paraffin-embedded human liver cancer. 1, Antibody was diluted at 1:200(4° overnight). 2, Tris-EDTA,pH9.0 was used for antigen retrieval. 3,Secondary antibody was diluted at 1:200(room temperature, 45min).