



p44S10 Polyclonal Antibody

Catalog No	YP-Ab-02730
Isotype	IgG
Reactivity	Human;Mouse;Rat
Applications	WB;IHC;IF;ELISA
Gene Name	PSMD6
Protein Name	26S proteasome non-ATPase regulatory subunit 6
Immunogen	The antiserum was produced against synthesized peptide derived from human PSMD6. AA range:201-250
Specificity	p44S10 Polyclonal Antibody detects endogenous levels of p44S10 protein.
Formulation	Liquid in PBS containing 50% glycerol, 0.5% BSA and 0.02% sodium azide.
Source	Polyclonal, Rabbit,IgG
Purification	The antibody was affinity-purified from rabbit antiserum by affinity-chromatography using epitope-specific immunogen.
Dilution	WB: 1/500 - 1/2000. IHC: 1/100 - 1/300. ELISA: 1/40000.. IF 1:50-200
Concentration	1 mg/ml
Purity	≥90%
Storage Stability	-20°C/1 year
Synonyms	PSMD6; KIAA0107; PFAAP4; 26S proteasome non-ATPase regulatory subunit 6; 26S proteasome regulatory subunit RPN7; 26S proteasome regulatory subunit S10; Breast cancer-associated protein SGA-113M; Phosphonoformate immuno-associated protein 4;
Observed Band	45kD
Cell Pathway	proteasome complex,nucleoplasm,cytosol,proteasome regulatory particle,proteasome accessory complex,extracellular exosome,
Tissue Specificity	Bone marrow,Lymph,Mammary cancer,Ovary,Placenta,Testis,
Function	function:Acts as a regulatory subunit of the 26S proteasome which is involved in the ATP-dependent degradation of ubiquitinated proteins.,similarity:Belongs to the proteasome subunit S10 family.,similarity:Contains 1 PCI domain.,subunit:Component of the PA700 complex.,
Background	This gene encodes a member of the protease subunit S10 family. The encoded protein is a subunit of the 26S proteasome which colocalizes with DNA damage foci and is involved in the ATP-dependent degradation of ubiquitinated proteins. Alternative splicing results in multiple transcript variants [provided by RefSeq, Nov 2012],

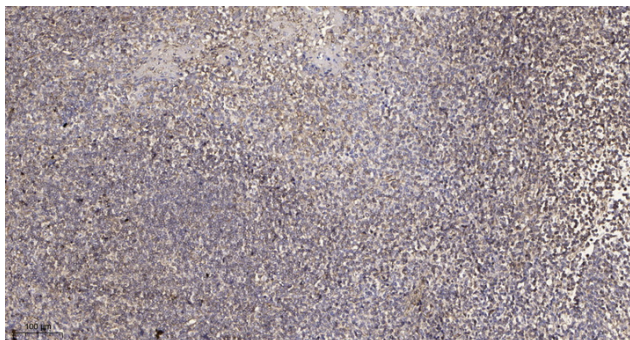
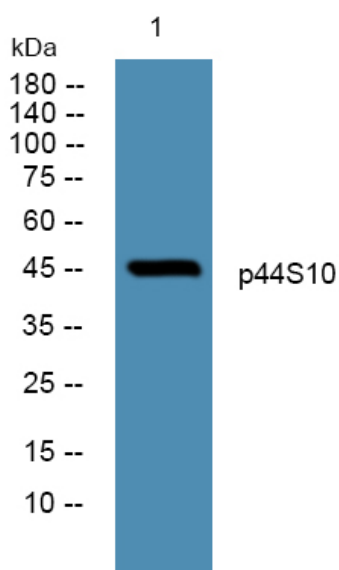
**matters needing attention**

Avoid repeated freezing and thawing!

Usage suggestions

This product can be used in immunological reaction related experiments. For more information, please consult technical personnel.

Products Images



Immunohistochemical analysis of paraffin-embedded human tonsil. 1, Antibody was diluted at 1:200(4° overnight). 2, Tris-EDTA, pH9.0 was used for antigen retrieval. 3, Secondary antibody was diluted at 1:200(room temperature, 30min).