

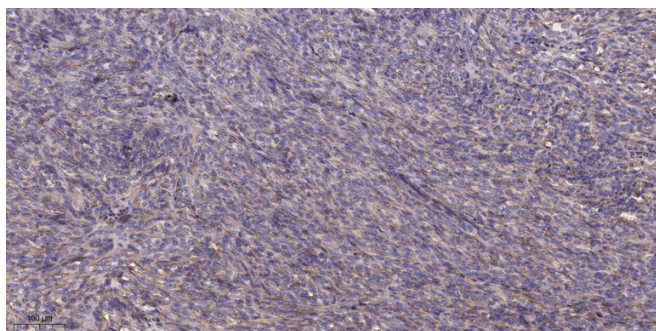


NDUFC1 Polyclonal Antibody

Catalog No	YP-Ab-02705
Isotype	IgG
Reactivity	Human;Mouse
Applications	IHC;IF;ELISA
Gene Name	NDUFC1
Protein Name	NADH dehydrogenase [ubiquinone] 1 subunit C1 mitochondrial
Immunogen	Synthesized peptide derived from NDUFC1 . at AA range: 40-120
Specificity	NDUFC1 Polyclonal Antibody detects endogenous levels of NDUFC1 protein.
Formulation	Liquid in PBS containing 50% glycerol, 0.5% BSA and 0.02% sodium azide.
Source	Polyclonal, Rabbit,IgG
Purification	The antibody was affinity-purified from rabbit antiserum by affinity-chromatography using epitope-specific immunogen.
Dilution	IHC: 1/100 - 1/300. ELISA: 1/10000.. IF 1:50-200
Concentration	1 mg/ml
Purity	≥90%
Storage Stability	-20°C/1 year
Synonyms	NDUFC1; NADH dehydrogenase [ubiquinone] 1 subunit C1; mitochondrial; Complex I-KFYI; CI-KFYI; NADH-ubiquinone oxidoreductase KFYI subunit
Observed Band	
Cell Pathway	Mitochondrion inner membrane ; Single-pass membrane protein ; Matrix side .
Tissue Specificity	Brain,Heart,Skin,Umbilical cord blood,
Function	function:Accessory subunit of the mitochondrial membrane respiratory chain NADH dehydrogenase (Complex I), that is believed to be not involved in catalysis. Complex I functions in the transfer of electrons from NADH to the respiratory chain. The immediate electron acceptor for the enzyme is believed to be ubiquinone.,similarity:Belongs to the complex I NDUFC1 subunit family.,subunit:Complex I is composed of 45 different subunits.,
Background	The encoded protein is a subunit of the NADH:ubiquinone oxidoreductase (complex I), the first enzyme complex in the electron transport chain located in the inner mitochondrial membrane. Alternative splicing results in multiple transcript variants. [provided by RefSeq, May 2010],
matters needing attention	Avoid repeated freezing and thawing!

**Usage suggestions**

This product can be used in immunological reaction related experiments. For more information, please consult technical personnel.

Products Images

Immunohistochemical analysis of paraffin-embedded human Colon cancer. 1, Antibody was diluted at 1:200(4° overnight). 2, Tris-EDTA,pH9.0 was used for antigen retrieval. 3,Secondary antibody was diluted at 1:200(room temperature, 45min).