



NDUFA9 Polyclonal Antibody

| | |
|---------------------------|--|
| Catalog No | YP-Ab-02701 |
| Isotype | IgG |
| Reactivity | Human;Mouse;Rat |
| Applications | WB;ELISA |
| Gene Name | NDUFA9 |
| Protein Name | NADH dehydrogenase [ubiquinone] 1 alpha subcomplex subunit 9 mitochondrial |
| Immunogen | The antiserum was produced against synthesized peptide derived from human NDUFA9. AA range:87-136 |
| Specificity | NDUFA9 Polyclonal Antibody detects endogenous levels of NDUFA9 protein. |
| Formulation | Liquid in PBS containing 50% glycerol, 0.5% BSA and 0.02% sodium azide. |
| Source | Polyclonal, Rabbit,IgG |
| Purification | The antibody was affinity-purified from rabbit antiserum by affinity-chromatography using epitope-specific immunogen. |
| Dilution | Western Blot: 1/500 - 1/2000. ELISA: 1/10000. Not yet tested in other applications. |
| Concentration | 1 mg/ml |
| Purity | ≥90% |
| Storage Stability | -20°C/1 year |
| Synonyms | NDUFA9; NDUFS2L; NADH dehydrogenase [ubiquinone] 1 alpha subcomplex subunit 9; mitochondrial; Complex I-39kD; CI-39kD; NADH-ubiquinone oxidoreductase 39 kDa subunit |
| Observed Band | 40kD |
| Cell Pathway | Mitochondrion matrix . |
| Tissue Specificity | Blood,Colon,Liver,Muscle,Placenta,Skeletal muscle, |
| Function | cofactor: Binds 1 FAD per subunit.,function: Accessory subunit of the mitochondrial membrane respiratory chain NADH dehydrogenase (Complex I), that is believed to be not involved in catalysis. Complex I functions in the transfer of electrons from NADH to the respiratory chain. The immediate electron acceptor for the enzyme is believed to be ubiquinone.,similarity: Belongs to the complex I NDUFA9 subunit family.,subunit: Complex I is composed of 45 different subunits. This a component of the hydrophobic protein fraction., |
| Background | The encoded protein is a subunit of the hydrophobic protein fraction of the NADH:ubiquinone oxidoreductase (complex I), the first enzyme complex in the electron transport chain located in the inner mitochondrial membrane. A pseudogene has been identified on chromosome 12. [provided by RefSeq, May 2010], |

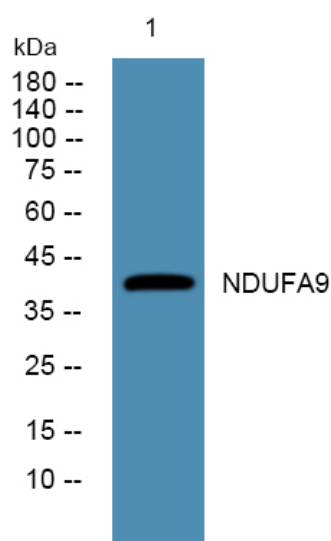
matters needing attention

Avoid repeated freezing and thawing!

Usage suggestions

This product can be used in immunological reaction related experiments. For more information, please consult technical personnel.

Products Images



Western blot analysis of lysates from SH-SY5Y cells, primary antibody was diluted at 1:1000, 4° over night