

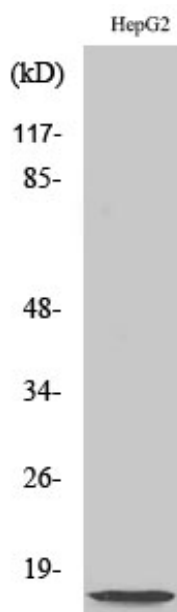


NDUFA4L2 Polyclonal Antibody

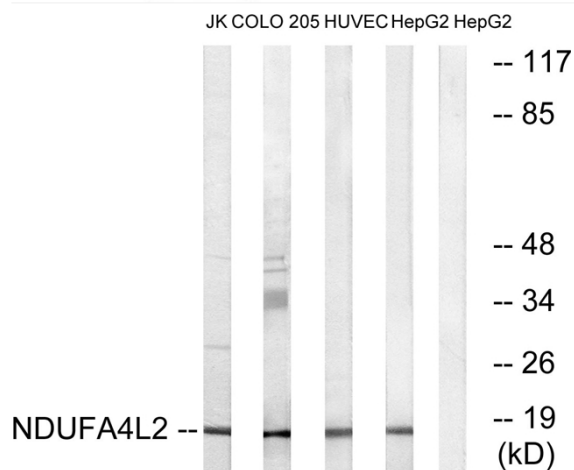
Catalog No	YP-Ab-02699
Isotype	IgG
Reactivity	Human;Mouse
Applications	WB;ELISA
Gene Name	NDUFA4L2
Protein Name	NADH dehydrogenase [ubiquinone] 1 alpha subcomplex subunit 4-like 2
Immunogen	The antiserum was produced against synthesized peptide derived from human NDUFA4L2. AA range:38-87
Specificity	NDUFA4L2 Polyclonal Antibody detects endogenous levels of NDUFA4L2 protein.
Formulation	Liquid in PBS containing 50% glycerol, 0.5% BSA and 0.02% sodium azide.
Source	Polyclonal, Rabbit,IgG
Purification	The antibody was affinity-purified from rabbit antiserum by affinity-chromatography using epitope-specific immunogen.
Dilution	Western Blot: 1/500 - 1/2000. ELISA: 1/20000. Not yet tested in other applications.
Concentration	1 mg/ml
Purity	≥90%
Storage Stability	-20°C/1 year
Synonyms	NDUFA4L2; NADH dehydrogenase [ubiquinone] 1 alpha subcomplex subunit 4-like 2; NADH-ubiquinone oxidoreductase MLRQ subunit homolog; NUOMS
Observed Band	15kD
Cell Pathway	mitochondrial respiratory chain complex IV,integral component of membrane,
Tissue Specificity	Adrenal gland,Muscle,
Function	similarity:Belongs to the complex I NDUFA4 subunit family.,
Background	similarity:Belongs to the complex I NDUFA4 subunit family.,
matters needing attention	Avoid repeated freezing and thawing!
Usage suggestions	This product can be used in immunological reaction related experiments. For more information, please consult technical personnel.



Products Images



Western Blot analysis of various cells using NDUFA4L2 Polyclonal Antibody diluted at 1:2000



Western blot analysis of lysates from HepG2, HUVEC, COLO, and Jurkat cells, using NDUFA4L2 Antibody. The lane on the right is blocked with the synthesized peptide.