



NDUFA3 Polyclonal Antibody

| | |
|---------------------------|--|
| Catalog No | YP-Ab-02697 |
| Isotype | IgG |
| Reactivity | Human;Mouse |
| Applications | IHC;IF;ELISA |
| Gene Name | NDUFA3 |
| Protein Name | NADH dehydrogenase [ubiquinone] 1 alpha subcomplex subunit 3 |
| Immunogen | The antiserum was produced against synthesized peptide derived from human NDUFA3. AA range:34-83 |
| Specificity | NDUFA3 Polyclonal Antibody detects endogenous levels of NDUFA3 protein. |
| Formulation | Liquid in PBS containing 50% glycerol, 0.5% BSA and 0.02% sodium azide. |
| Source | Polyclonal, Rabbit,IgG |
| Purification | The antibody was affinity-purified from rabbit antiserum by affinity-chromatography using epitope-specific immunogen. |
| Dilution | IHC: 1/100 - 1/300. ELISA: 1/40000.. IF 1:50-200 |
| Concentration | 1 mg/ml |
| Purity | ≥90% |
| Storage Stability | -20°C/1 year |
| Synonyms | NDUFA3; NADH dehydrogenase [ubiquinone] 1 alpha subcomplex subunit 3; Complex I-B9; CI-B9; NADH-ubiquinone oxidoreductase B9 subunit |
| Observed Band | |
| Cell Pathway | Mitochondrion inner membrane ; Single-pass membrane protein . |
| Tissue Specificity | Cerebellum,Pancreas,Prostate,Umbilical cord blood, |
| Function | function:Accessory subunit of the mitochondrial membrane respiratory chain NADH dehydrogenase (Complex I), that is believed to be not involved in catalysis. Complex I functions in the transfer of electrons from NADH to the respiratory chain. The immediate electron acceptor for the enzyme is believed to be ubiquinone.,similarity:Belongs to the complex I NDUFA3 subunit family.,subunit:Complex I is composed of 45 different subunits., |
| Background | function:Accessory subunit of the mitochondrial membrane respiratory chain NADH dehydrogenase (Complex I), that is believed to be not involved in catalysis. Complex I functions in the transfer of electrons from NADH to the respiratory chain. The immediate electron acceptor for the enzyme is believed to be ubiquinone.,similarity:Belongs to the complex I NDUFA3 subunit family.,subunit:Complex I is composed of 45 different subunits., |

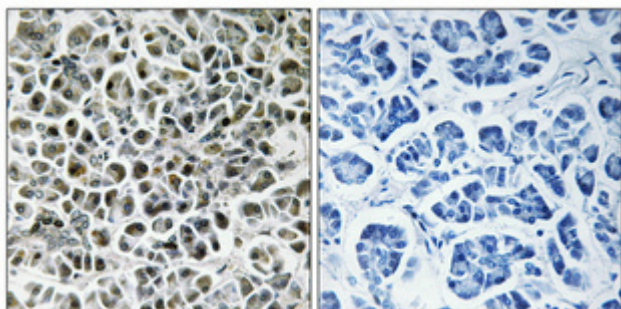
matters needing attention

Avoid repeated freezing and thawing!

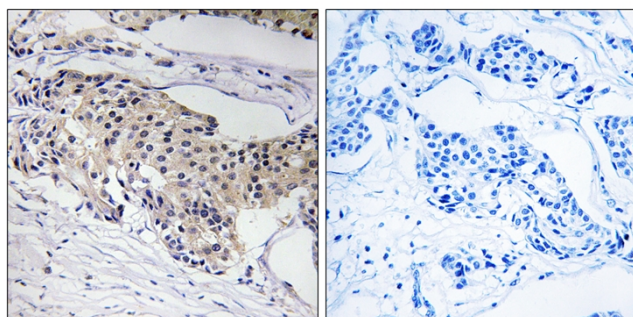
Usage suggestions

This product can be used in immunological reaction related experiments. For more information, please consult technical personnel.

Products Images



Immunohistochemical analysis of paraffin-embedded Human pancreas. Antibody was diluted at 1:100(4° overnight). High-pressure and temperature Tris-EDTA, pH8.0 was used for antigen retrieval. Negative control (right) obtained from antibody was pre-absorbed by immunogen peptide.



Immunohistochemistry analysis of paraffin-embedded human breast carcinoma tissue, using NDUFA3 Antibody. The picture on the right is blocked with the synthesized peptide.