



Ndfip1 Polyclonal Antibody

Catalog No	YP-Ab-02696
Isotype	IgG
Reactivity	Human;Mouse;Rat
Applications	WB;ELISA
Gene Name	NDFIP1
Protein Name	NEDD4 family-interacting protein 1
Immunogen	Synthesized peptide derived from Ndfip1 . at AA range: 150-230
Specificity	Ndfip1 Polyclonal Antibody detects endogenous levels of Ndfip1 protein.
Formulation	Liquid in PBS containing 50% glycerol, 0.5% BSA and 0.02% sodium azide.
Source	Polyclonal, Rabbit,IgG
Purification	The antibody was affinity-purified from rabbit antiserum by affinity-chromatography using epitope-specific immunogen.
Dilution	Western Blot: 1/500 - 1/2000. ELISA: 1/40000. Not yet tested in other applications.
Concentration	1 mg/ml
Purity	≥90%
Storage Stability	-20°C/1 year
Synonyms	NDFIP1; N4WBP5; PSEC0192; PSEC0223; NEDD4 family-interacting protein 1; Breast cancer-associated protein SGA-1M; NEDD4 WW domain-binding protein 5; Putative MAPK-activating protein PM13; Putative NF-kappa-B-activating protein 164; Putative
Observed Band	25kD
Cell Pathway	Endosome membrane ; Multi-pass membrane protein . Golgi apparatus membrane . Cell junction, synapse, synaptosome . Cell projection, dendrite . Secreted . Detected in exosomes and secreted via the exosomal pathway (PubMed:18819914).
Tissue Specificity	Widely expressed. Higher levels are detected in cerebellum, pituitary, thalamus, kidney, liver, testis, salivary glands and placenta. Also expressed in fetal brain, kidney and lung.
Function	developmental stage:Expressed in fetal brain, kidney and lung.,domain:The WW-binding motifs mediate interaction with NEDD4.,function:May play a role in Golgi structure maintenance.,PTM:Ubiquitinated by NEDD4; mono-, di- and polyubiquitinated forms are detected. Ubiquitination regulates its degradation.,subunit:Interacts with NEDD4. Interacts in vitro with NEDD4L, SR140, WWP2 and ITCH.,tissue specificity:Widely expressed. Higher levels are detected in cerebellum, pituitary, thalamus, kidney, liver, testis, salivary glands and placenta.,



Background

The protein encoded by this gene belongs to a small group of evolutionarily conserved proteins with three transmembrane domains. It is a potential target for ubiquitination by the Nedd4 family of proteins. This protein is thought to be part of a family of integral Golgi membrane proteins. [provided by RefSeq, Jul 2008],

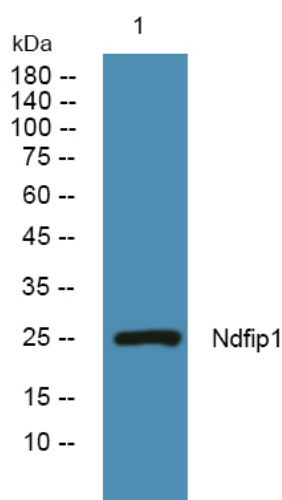
matters needing attention

Avoid repeated freezing and thawing!

Usage suggestions

This product can be used in immunological reaction related experiments. For more information, please consult technical personnel.

Products Images



Western blot analysis of lysates from Jarkat cells, primary antibody was diluted at 1:1000, 4° over night