



NBPF1/9/10/12/14/15/16/20 Polyclonal Antibody

Catalog No	YP-Ab-02690
Isotype	IgG
Reactivity	Human;Rat;Mouse;
Applications	WB;IHC;IF;ELISA
Gene Name	NBPF12
Protein Name	Neuroblastoma breakpoint family member 12
Immunogen	The antiserum was produced against synthesized peptide derived from human NBPF1/9/10/12/14/15/16/20. AA range:121-150
Specificity	NBPF1/9/10/12/14/15/16/20 Polyclonal Antibody detects endogenous levels of NBPF1/9/10/12/14/15/16/20 protein.
Formulation	Liquid in PBS containing 50% glycerol, 0.5% BSA and 0.02% sodium azide.
Source	Polyclonal, Rabbit,IgG
Purification	The antibody was affinity-purified from rabbit antiserum by affinity-chromatography using epitope-specific immunogen.
Dilution	WB: 1/500 - 1/2000. IHC: 1/100 - 1/300. ELISA: 1/40000.. IF 1:50-200
Concentration	1 mg/ml
Purity	≥90%
Storage Stability	-20°C/1 year
Synonyms	NBPF12; COAS1; KIAA1245; Neuroblastoma breakpoint family member 12; Chromosome 1 amplified sequence 1; NBPF10; Neuroblastoma breakpoint family member 10; NBPF16; Neuroblastoma breakpoint family member 16; NBPF1; KIAA1693; Neuroblastoma brea
Observed Band	36kD
Cell Pathway	Cytoplasm .
Tissue Specificity	Widely expressed with highest levels in brain, ovary, mammary gland, skin and adipose tissue. Also expressed in testis. Detected in a number of tumors including osteosarcoma, mammary carcinoma and hepatocellular carcinoma.
Function	miscellaneous:Encoded by one of the numerous copies of NBPF genes clustered in the p36, p12 and q21 region of the chromosome 1.,similarity:Belongs to the NBPF family.,similarity:Contains 10 NBPF domains.,similarity:Contains 2 NBPF domains.,similarity:Contains 3 NBPF domains.,similarity:Contains 6 NBPF domains.,similarity:Contains 7 NBPF domains.,similarity:Contains 8 NBPF domains.,tissue specificity:Expressed in a neuroblastoma cell line.,tissue specificity:Expressed in spinal cord.,tissue specificity:Expressed in spleen and fetal liver.,tissue specificity:Expressed in the mammary gland.,tissue specificity:Ubiquitously expressed with a higher expression observed in breast and liver. Also expressed in neuroblastoma cell line.,tissue specificity:Widely



expressed. The only tissue which shows a weak expression is kidney.,

Background

This gene is a member of the neuroblastoma breakpoint family (NBPF) which consists of dozens of recently duplicated genes primarily located in segmental duplications on human chromosome 1. This gene family has experienced its greatest expansion within the human lineage and has expanded, to a lesser extent, among primates in general. Members of this gene family are characterized by tandemly repeated copies of DUF1220 protein domains. Gene copy number variations in the human chromosomal region 1q21.1, where most DUF1220 domains are located, have been implicated in a number of developmental and neurogenetic diseases such as microcephaly, macrocephaly, autism, schizophrenia, mental retardation, congenital heart disease, neuroblastoma, and congenital kidney and urinary tract anomalies. Altered expression of some gene family members is associated with several types of cancer. This

matters needing attention

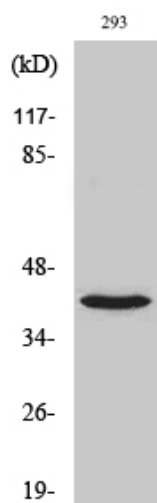
Avoid repeated freezing and thawing!

Usage suggestions

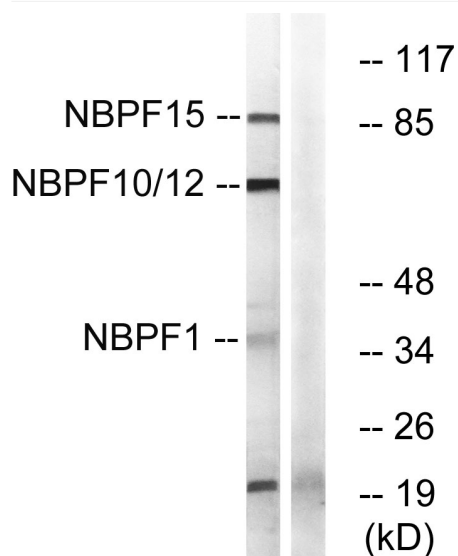
This product can be used in immunological reaction related experiments. For more information, please consult technical personnel.



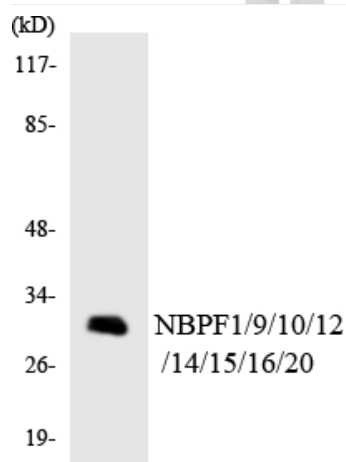
Products Images



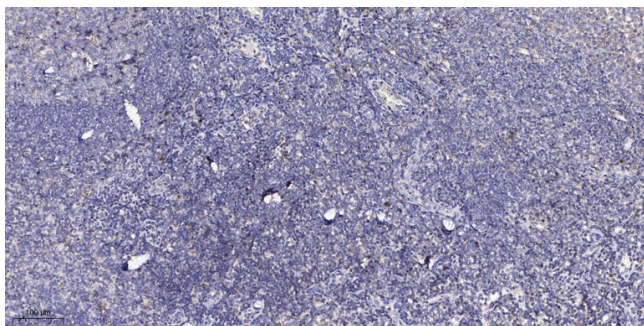
Western Blot analysis of various cells using
NBPF1/9/10/12/14/15/16/20 Polyclonal Antibody



Western blot analysis of lysates from 293, HepG2,
Jurkat, and COLO cells, using
NBPF1/9/10/12/14/15/16/20 Antibody. The lane on the
right is blocked with the synthesized peptide.



Western blot analysis of the lysates from HT-29 cells
using NBPF1/9/10/12/14/15/16/20 antibody.



Immunohistochemical analysis of paraffin-embedded human tonsil. 1, Antibody was diluted at 1:200(4° overnight). 2, Tris-EDTA, pH9.0 was used for antigen retrieval. 3, Secondary antibody was diluted at 1:200(room temperature, 30min).