



N4BP1 Polyclonal Antibody

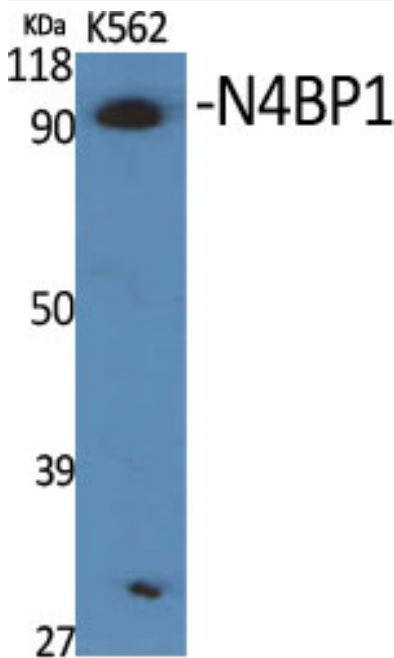
Catalog No	YP-Ab-02689
Isotype	IgG
Reactivity	Human;Rat;Mouse;
Applications	WB;IHC;IF;ELISA
Gene Name	N4BP1
Protein Name	NEDD4-binding protein 1
Immunogen	The antiserum was produced against synthesized peptide derived from human N4BP1. AA range:383-432
Specificity	N4BP1 Polyclonal Antibody detects endogenous levels of N4BP1 protein.
Formulation	Liquid in PBS containing 50% glycerol, 0.5% BSA and 0.02% sodium azide.
Source	Polyclonal, Rabbit,IgG
Purification	The antibody was affinity-purified from rabbit antiserum by affinity-chromatography using epitope-specific immunogen.
Dilution	WB: 1/500 - 1/2000. IHC: 1/100 - 1/300. ELISA: 1/40000.. IF 1:50-200
Concentration	1 mg/ml
Purity	≥90%
Storage Stability	-20°C/1 year
Synonyms	N4BP1; KIAA0615; NEDD4-binding protein 1; N4BP1
Observed Band	100kD
Cell Pathway	Cytoplasm, cytosol . Nucleus . Nucleus, nucleolus . Nucleus, PML body . Primarily localizes to the nucleolus. Also localizes to the PML nuclear bodies, when desumoylated. .
Tissue Specificity	Detected in heart, lung, brain, liver, skeletal muscle, pancreas, kidney, spleen, testis and ovary.
Function	PTM:Monoubiquitinated.,PTM:Phosphorylated upon DNA damage, probably by ATM or ATR.,similarity:Belongs to the N4BP1 family.,subcellular location:In discrete circular structures.,subunit:Bounds NEDD4.,tissue specificity:Detected in heart, lung, brain, liver, skeletal muscle, pancreas, kidney, spleen, testis and ovary.,
Background	PTM:Monoubiquitinated.,PTM:Phosphorylated upon DNA damage, probably by ATM or ATR.,similarity:Belongs to the N4BP1 family.,subcellular location:In discrete circular structures.,subunit:Bounds NEDD4.,tissue specificity:Detected in heart, lung, brain, liver, skeletal muscle, pancreas, kidney, spleen, testis and ovary.,
matters needing attention	Avoid repeated freezing and thawing!



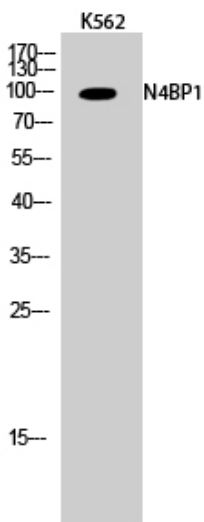
Usage suggestions

This product can be used in immunological reaction related experiments. For more information, please consult technical personnel.

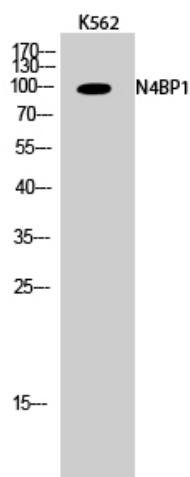
Products Images



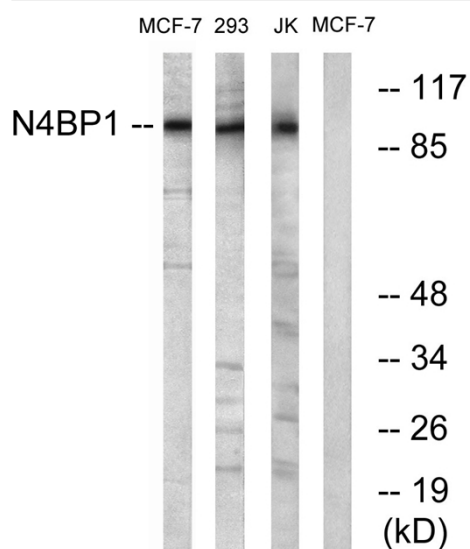
Western Blot analysis of various cells using N4BP1 Polyclonal Antibody cells nucleus extracted by Minute TM Cytoplasmic and Nuclear Fractionation kit (SC-003, Inventbiotech, MN, USA).



Western Blot analysis of K562 cells using N4BP1 Polyclonal Antibody cells nucleus extracted by Minute TM Cytoplasmic and Nuclear Fractionation kit (SC-003, Inventbiotech, MN, USA).



Immunohistochemical analysis of paraffin-embedded Human brain. Antibody was diluted at 1:100 (4° overnight). High-pressure and temperature Tris-EDTA, pH 8.0 was used for antigen retrieval. Negative control (right) obtained from antibody was pre-absorbed by immunogen peptide.



Western blot analysis of lysates from MCF-7 and Jurkat/293 cells, using N4BP1 Antibody. The lane on the right is blocked with the synthesized peptide.