



ME3 Polyclonal Antibody

Catalog No	YP-Ab-02674
Isotype	IgG
Reactivity	Human;Mouse
Applications	WB;IHC;IF;ELISA
Gene Name	ME3
Protein Name	NADP-dependent malic enzyme mitochondrial
Immunogen	The antiserum was produced against synthesized peptide derived from human ME3. AA range:545-594
Specificity	ME3 Polyclonal Antibody detects endogenous levels of ME3 protein.
Formulation	Liquid in PBS containing 50% glycerol, 0.5% BSA and 0.02% sodium azide.
Source	Polyclonal, Rabbit,IgG
Purification	The antibody was affinity-purified from rabbit antiserum by affinity-chromatography using epitope-specific immunogen.
Dilution	WB: 1/500 - 1/2000. IHC: 1/100 - 1/300. ELISA: 1/40000.. IF 1:50-200
Concentration	1 mg/ml
Purity	≥90%
Storage Stability	-20°C/1 year
Synonyms	ME3; NADP-dependent malic enzyme; mitochondrial; NADP-ME; Malic enzyme 3
Observed Band	67kD
Cell Pathway	Mitochondrion matrix.
Tissue Specificity	Expressed predominantly in organs with a low-division rate.
Function	catalytic activity:(S)-malate + NADP(+) = pyruvate + CO(2) + NADPH.,cofactor:Divalent metal cations. Prefers magnesium or manganese.,similarity:Belongs to the malic enzymes family.,tissue specificity:Expressed predominantly in organs with a low-division rate.,
Background	Malic enzyme catalyzes the oxidative decarboxylation of malate to pyruvate using either NAD ⁺ or NADP ⁺ as a cofactor. Mammalian tissues contain 3 distinct isoforms of malic enzyme: a cytosolic NADP(+)-dependent isoform, a mitochondrial NADP(+)-dependent isoform, and a mitochondrial NAD(+)-dependent isoform. This gene encodes a mitochondrial NADP(+)-dependent isoform. Multiple alternatively spliced transcript variants have been found for this gene, but the biological validity of some variants has not been determined. [provided by RefSeq, Jul 2008],



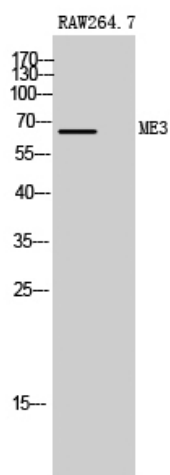
matters needing attention

Avoid repeated freezing and thawing!

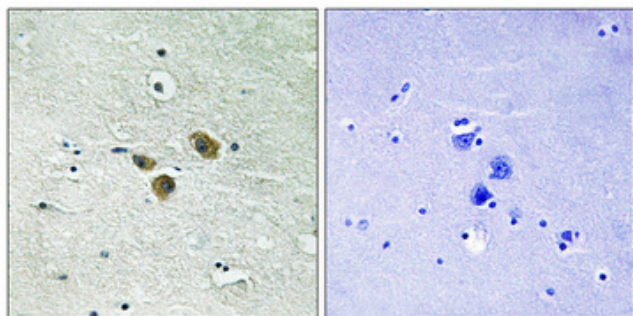
Usage suggestions

This product can be used in immunological reaction related experiments. For more information, please consult technical personnel.

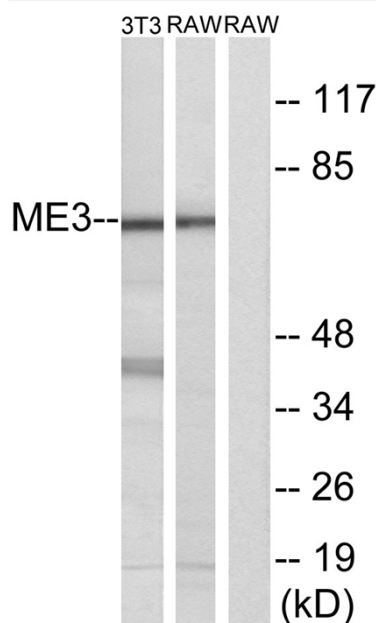
Products Images



Western Blot analysis of RAW264.7 cells using ME3 Polyclonal Antibody



Immunohistochemical analysis of paraffin-embedded Human brain. Antibody was diluted at 1:100 (4° overnight). High-pressure and temperature Tris-EDTA, pH 8.0 was used for antigen retrieval. Negative control (right) obtained from antibody was pre-absorbed by immunogen peptide.



Western blot analysis of lysates from RAW264.7 and NIH/3T3 cells, using ME3 Antibody. The lane on the right is blocked with the synthesized peptide.