



MARCH5 Polyclonal Antibody

| | |
|---------------------------|---|
| Catalog No | YP-Ab-02672 |
| Isotype | IgG |
| Reactivity | Human;Mouse;Rat |
| Applications | IF;WB;ELISA |
| Gene Name | 44990 |
| Protein Name | E3 ubiquitin-protein ligase MARCH5 |
| Immunogen | The antiserum was produced against synthesized peptide derived from human MARCH5. AA range:21-70 |
| Specificity | MARCH5 Polyclonal Antibody detects endogenous levels of 40607 protein. |
| Formulation | Liquid in PBS containing 50% glycerol, 0.5% BSA and 0.02% sodium azide. |
| Source | Polyclonal, Rabbit,IgG |
| Purification | The antibody was affinity-purified from rabbit antiserum by affinity-chromatography using epitope-specific immunogen. |
| Dilution | WB 1:500-2000 Immunofluorescence: 1/200 - 1/1000. ELISA: 1/40000. Not yet tested in other applications. |
| Concentration | 1 mg/ml |
| Purity | ≥90% |
| Storage Stability | -20°C/1 year |
| Synonyms | MARCH5; RNF153; E3 ubiquitin-protein ligase MARCH5; Membrane-associated RING finger protein 5; Membrane-associated RING-CH protein V; MARCH-V; Mitochondrial ubiquitin ligase; MITOL; RING finger protein 153 |
| Observed Band | 37kD |
| Cell Pathway | Mitochondrion outer membrane ; Multi-pass membrane protein . Endoplasmic reticulum membrane ; Multi-pass membrane protein . Authors show that the protein can be detected in endoplasmic reticulum (PubMed:14722266). Authors (PubMed:16874301) show its presence only in mitochondria (PubMed:16874301). . |
| Tissue Specificity | Expressed in brain, heart, liver, lung, spleen, stomach, testis, skeletal and muscle. |
| Function | domain:The RING-CH-type zinc finger domain is required for E3 ligase activity.,function:Mitochondrial E3 ubiquitin-protein ligase that plays a crucial role in the control of mitochondrial morphology. Promotes ubiquitination of DRP1. E3 ubiquitin ligases accept ubiquitin from an E2 ubiquitin-conjugating enzyme in the form of a thioester and then directly transfer the ubiquitin to targeted substrates.,pathway:Protein modification; protein ubiquitination.,similarity:Contains 1 RING-CH-type zinc finger.,subunit:Interacts with MTFN2 and ubiquitinated forms of DRP1., |



Background

MARCH5 is a ubiquitin ligase of the mitochondrial outer membrane that plays a role in the control of mitochondrial morphology by regulating mitofusin-2 (MFN2; MIM 608507) and DRP1 (DNM1L; MIM 603850) (Nakamura et al., 2006 [PubMed 16936636]).[supplied by OMIM, Mar 2008],

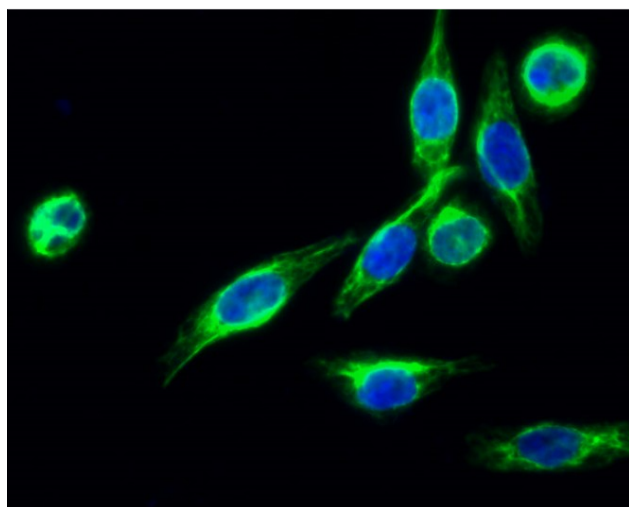
matters needing attention

Avoid repeated freezing and thawing!

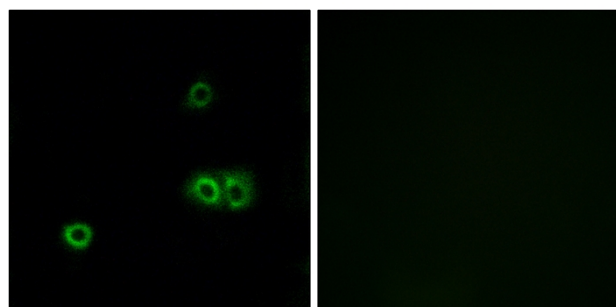
Usage suggestions

This product can be used in immunological reaction related experiments. For more information, please consult technical personnel.

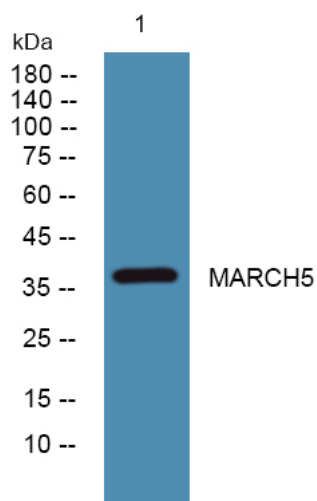
Products Images



Immunofluorescence analysis of HeLa cell. 1, MARCH5 Polyclonal Antibody (green) was diluted at 1:200 (4° overnight). 2, Goat Anti Rabbit Alexa Fluor 488 Catalog: RS3211 was diluted at 1:1000 (room temperature, 50min). 3 DAPI (blue) 10min.



Immunofluorescence analysis of A549 cells, using MARCH5 Antibody. The picture on the right is blocked with the synthesized peptide.



Western blot analysis of lysates from U2OS cells, primary antibody was diluted at 1:1000, 4° over night