



Malic enzyme 1 Polyclonal Antibody

Catalog No	YP-Ab-02665
Isotype	IgG
Reactivity	Human;Mouse;Rat
Applications	WB;ELISA
Gene Name	ME1
Protein Name	NADP-dependent malic enzyme
Immunogen	The antiserum was produced against synthesized peptide derived from human ME1. AA range:468-517
Specificity	Malic enzyme 1 Polyclonal Antibody detects endogenous levels of Malic enzyme 1 protein.
Formulation	Liquid in PBS containing 50% glycerol, 0.5% BSA and 0.02% sodium azide.
Source	Polyclonal, Rabbit,IgG
Purification	The antibody was affinity-purified from rabbit antiserum by affinity-chromatography using epitope-specific immunogen.
Dilution	Western Blot: 1/500 - 1/2000. ELISA: 1/40000. Not yet tested in other applications.
Concentration	1 mg/ml
Purity	≥90%
Storage Stability	-20°C/1 year
Synonyms	ME1; NADP-dependent malic enzyme; NADP-ME; Malic enzyme 1
Observed Band	64kD
Cell Pathway	Cytoplasm .
Tissue Specificity	Expressed in all tissues tested including liver, placenta and white adipose tissue.
Function	catalytic activity:(S)-malate + NADP(+) = pyruvate + CO(2) + NADPH.,cofactor:Divalent metal cations. Prefers magnesium or manganese.,online information:The Singapore human mutation and polymorphism database,similarity:Belongs to the malic enzymes family.,subunit:Homotetramer.,tissue specificity:Expressed in all tissues tested including liver, placenta and white adipose tissue.,
Background	This gene encodes a cytosolic, NADP-dependent enzyme that generates NADPH for fatty acid biosynthesis. The activity of this enzyme, the reversible oxidative decarboxylation of malate, links the glycolytic and citric acid cycles. The regulation of expression for this gene is complex. Increased expression can result from elevated levels of thyroid hormones or by higher proportions of carbohydrates in the diet. [provided by RefSeq, Jul 2008],



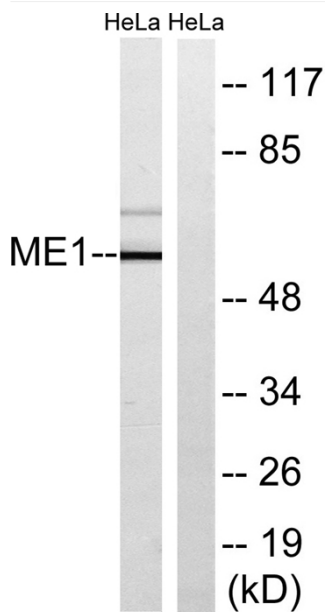
matters needing attention

Avoid repeated freezing and thawing!

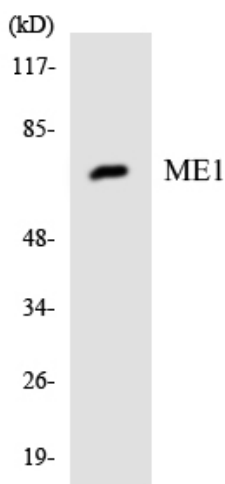
Usage suggestions

This product can be used in immunological reaction related experiments. For more information, please consult technical personnel.

Products Images



Western blot analysis of lysates from HeLa cells, using ME1 Antibody. The lane on the right is blocked with the synthesized peptide.



Western blot analysis of the lysates from HeLa cells using ME1 antibody.