



LASS4 Polyclonal Antibody

Catalog No	YP-Ab-02657
Isotype	IgG
Reactivity	Human;Rat;Mouse;
Applications	WB;IHC;IF;ELISA
Gene Name	CERS4
Protein Name	Ceramide synthase 4
Immunogen	The antiserum was produced against synthesized peptide derived from human LASS4. AA range:41-90
Specificity	LASS4 Polyclonal Antibody detects endogenous levels of LASS4 protein.
Formulation	Liquid in PBS containing 50% glycerol, 0.5% BSA and 0.02% sodium azide.
Source	Polyclonal, Rabbit,IgG
Purification	The antibody was affinity-purified from rabbit antiserum by affinity-chromatography using epitope-specific immunogen.
Dilution	WB: 1/500 - 1/2000. IHC: 1/100 - 1/300. ELISA: 1/10000.. IF 1:50-200
Concentration	1 mg/ml
Purity	≥90%
Storage Stability	-20°C/1 year
Synonyms	CERS4; LASS4; Ceramide synthase 4; CerS4; LAG1 longevity assurance homolog 4
Observed Band	46kD
Cell Pathway	Endoplasmic reticulum membrane ; Multi-pass membrane protein .
Tissue Specificity	Cerebellum,Embryo,Lung,
Function	function:May be either a bona fide (dihydro)ceramide synthase or a modulator of its activity. When overexpressed in cells is involved in the production of sphingolipids containing different fatty acid donors (N-linked stearyl- (C18) or arachidoyl- (C20) ceramides) in a fumonisin B1-independent manner.,similarity:Contains 1 homeobox DNA-binding domain.,similarity:Contains 1 TLC (TRAM/LAG1/CLN8) domain.,
Background	function:May be either a bona fide (dihydro)ceramide synthase or a modulator of its activity. When overexpressed in cells is involved in the production of sphingolipids containing different fatty acid donors (N-linked stearyl- (C18) or arachidoyl- (C20) ceramides) in a fumonisin B1-independent manner.,similarity:Contains 1 homeobox DNA-binding domain.,similarity:Contains 1 TLC (TRAM/LAG1/CLN8) domain.,



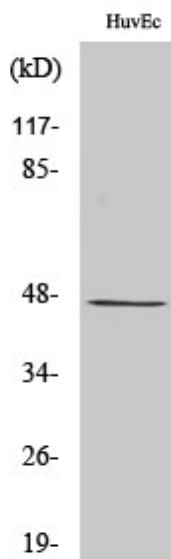
matters needing attention

Avoid repeated freezing and thawing!

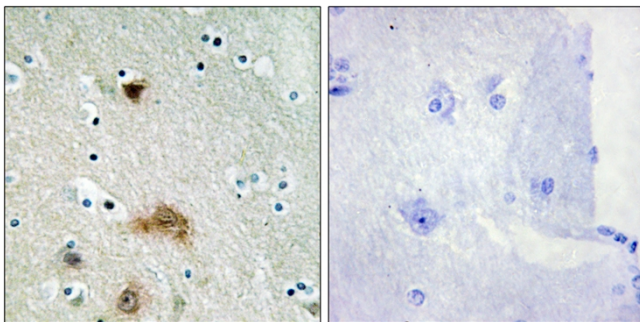
Usage suggestions

This product can be used in immunological reaction related experiments. For more information, please consult technical personnel.

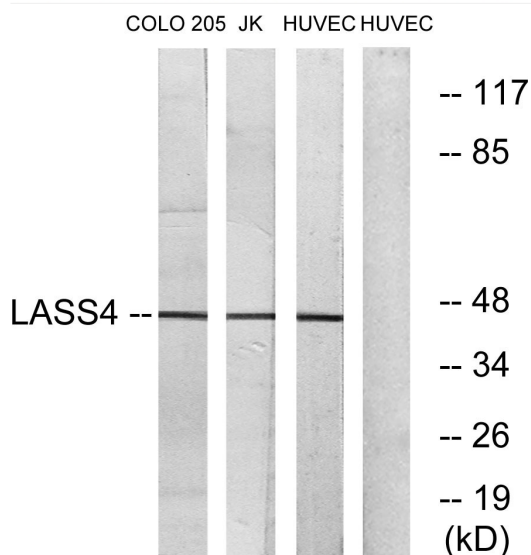
Products Images



Western Blot analysis of various cells using LASS4 Polyclonal Antibody



Immunohistochemistry analysis of paraffin-embedded human brain tissue, using LASS4 Antibody. The picture on the right is blocked with the synthesized peptide.



Western blot analysis of lysates from HUVEC, COLO, and Jurkat cells, using LASS4 Antibody. The lane on the right is blocked with the synthesized peptide.