



iPLA2γ Polyclonal Antibody

Catalog No	YP-Ab-02656
Isotype	IgG
Reactivity	Human;Mouse
Applications	WB;IHC
Gene Name	PNPLA8
Protein Name	Calcium-independent phospholipase A2-gamma
Immunogen	The antiserum was produced against synthesized peptide derived from human PNPLA8. AA range:691-740
Specificity	iPLA2γ Polyclonal Antibody detects endogenous levels of iPLA2γ protein.
Formulation	Liquid in PBS containing 50% glycerol, 0.5% BSA and 0.02% sodium azide.
Source	Polyclonal, Rabbit,IgG
Purification	The antibody was affinity-purified from rabbit antiserum by affinity-chromatography using epitope-specific immunogen.
Dilution	WB 1:500-2000;IHC-p 1:50-300
Concentration	1 mg/ml
Purity	≥90%
Storage Stability	-20°C/1 year
Synonyms	PNPLA8; IPLA22; IPLA2G; BM-043; Calcium-independent phospholipase A2-gamma; Intracellular membrane-associated calcium-independent phospholipase A2 gamma; iPLA2-gamma; PNPLA-gamma; Patatin-like phospholipase domain-containing protein 8; iPLA
Observed Band	88kD
Cell Pathway	Endoplasmic reticulum membrane ; Single-pass membrane protein . Mitochondrion membrane ; Single-pass membrane protein . Peroxisome membrane ; Single-pass membrane protein .
Tissue Specificity	Expressed in parenchymal tissues including heart, skeletal muscle, placenta, brain, liver and pancreas. Also expressed in bronchial epithelial cells and kidney. Highest expression is observed in skeletal muscle and heart.
Function	catalytic activity:2-lysophosphatidylcholine + H(2)O = glycerophosphocholine + a carboxylate..enzyme regulation:Inhibited by E-6-bromomethylene-3-1-naphthalenyl-2H-tetrahydropyran-2-one (BEL)..function:Calcium-independent phospholipase A2, which catalyzes the hydrolysis of the sn-2 position of glycerophospholipids, PtdSer and to a lower extent PtdCho. Cleaves membrane phospholipids..similarity:Contains 1 patatin domain..tissue specificity:Expressed in parenchymal tissues including heart, skeletal muscle, placenta, brain, liver and pancreas. Also expressed in bronchial epithelial cells and kidney. Highest expression is observed in skeletal muscle and



heart.,

Background

This gene encodes a member of the patatin-like phospholipase domain containing protein family. Members of this family are phospholipases which catalyze the cleavage of fatty acids from membrane phospholipids. The product of this gene is a calcium-independent phospholipase. Mutations in this gene have been associated with mitochondrial myopathy with lactic acidosis. Multiple transcript variants encoding different isoforms have been found for this gene. [provided by RefSeq, May 2015],

matters needing attention

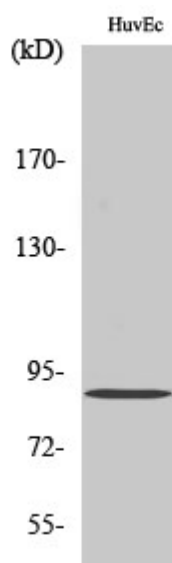
Avoid repeated freezing and thawing!

Usage suggestions

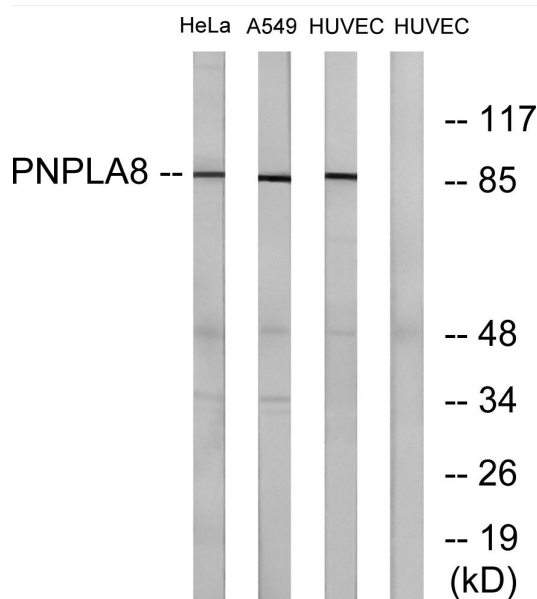
This product can be used in immunological reaction related experiments. For more information, please consult technical personnel.



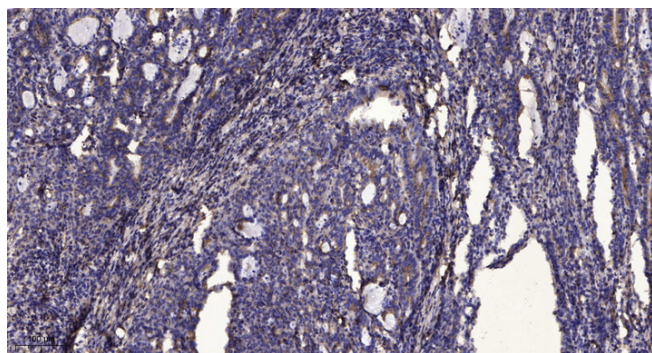
Products Images



Western Blot analysis of various cells using iPLA2y Polyclonal Antibody diluted at 1:2000



Western blot analysis of lysates from HUVEC, HeLa, and A549 cells, using PNPLA8 Antibody. The lane on the right is blocked with the synthesized peptide.



Immunohistochemical analysis of paraffin-embedded human Gastric adenocarcinoma. 1, Antibody was diluted at 1:200(4° overnight). 2, Tris-EDTA, pH9.0 was used for antigen retrieval. 3, Secondary antibody was diluted at 1:200(room temperature, 45min).