



Glucosidase II β Polyclonal Antibody

Catalog No	YP-Ab-02642
Isotype	IgG
Reactivity	Human;Mouse
Applications	WB;IF;ELISA
Gene Name	PRKCSH
Protein Name	Glucosidase 2 subunit beta
Immunogen	The antiserum was produced against synthesized peptide derived from human GLU2B. AA range:81-130
Specificity	Glucosidase II β Polyclonal Antibody detects endogenous levels of Glucosidase II β protein.
Formulation	Liquid in PBS containing 50% glycerol, 0.5% BSA and 0.02% sodium azide.
Source	Polyclonal, Rabbit,IgG
Purification	The antibody was affinity-purified from rabbit antiserum by affinity-chromatography using epitope-specific immunogen.
Dilution	Western Blot: 1/500 - 1/2000. Immunofluorescence: 1/200 - 1/1000. ELISA: 1/10000. Not yet tested in other applications.
Concentration	1 mg/ml
Purity	$\geq 90\%$
Storage Stability	-20°C/1 year
Synonyms	PRKCSH; G19P1; Glucosidase 2 subunit beta; 80K-H protein; Glucosidase II subunit beta; Protein kinase C substrate 60.1 kDa protein heavy chain; PKCSH
Observed Band	59kD
Cell Pathway	Endoplasmic reticulum .
Tissue Specificity	Lung,Lymphocyte,Platelet,
Function	disease:Defects in PRKCSH are a cause of polycystic liver disease (PCLD) [MIM:174050]. PCLD is an autosomal dominant disorder and is characterized by the presence of multiple liver cysts of biliary epithelial origin. PCLD is a distinct clinical and genetic entity that can occur independently from autosomal dominant polycystic kidney disease (ADPKD) [MIM:173900], which in a considerable but uncertain proportion of cases is associated with hepatic cysts.,function:Regulatory subunit of glucosidase II.,pathway:Glycan metabolism; N-glycan metabolism.,similarity:Contains 1 PRKCSH domain.,similarity:Contains 2 EF-hand domains.,subunit:Heterodimer of a catalytic alpha subunit (GANAB) and a beta subunit (PRKCSH). Binds glycosylated PTPRC.,
Background	This gene encodes the beta-subunit of glucosidase II, an N-linked glycan-processing enzyme in the endoplasmic reticulum. The encoded protein is an acidic phosphoprotein known to be a substrate for protein kinase C. Mutations



in this gene have been associated with the autosomal dominant polycystic liver disease. Alternative splicing results in multiple transcript variants. [provided by RefSeq, Jan 2014],

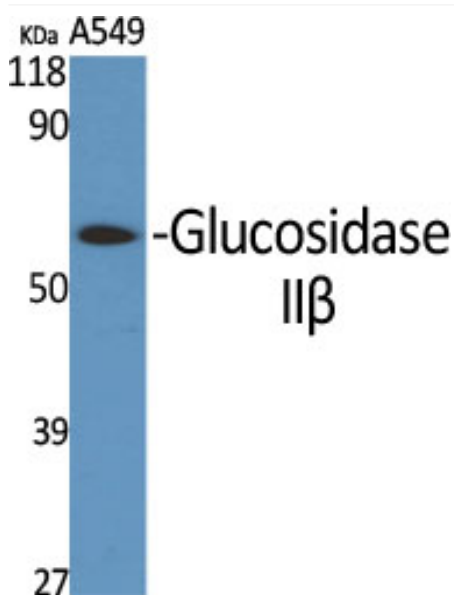
matters needing attention

Avoid repeated freezing and thawing!

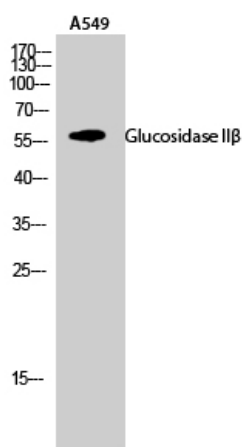
Usage suggestions

This product can be used in immunological reaction related experiments. For more information, please consult technical personnel.

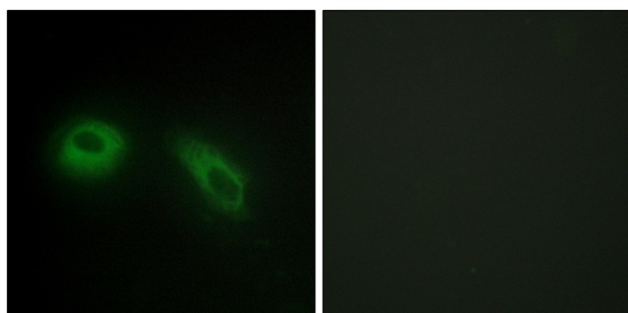
Products Images



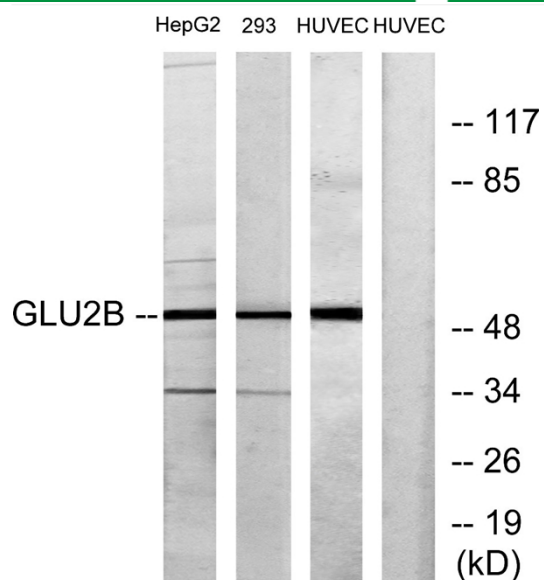
Western Blot analysis of various cells using Glucosidase IIβ Polyclonal Antibody



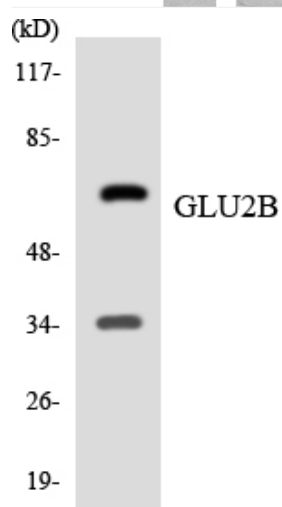
Western Blot analysis of A549 cells using Glucosidase IIβ Polyclonal Antibody



Immunofluorescence analysis of HeLa cells, using GLU2B Antibody. The picture on the right is blocked with the synthesized peptide.



Western blot analysis of lysates from HepG2, 293, and HUVEC cells, using GLU2B Antibody. The lane on the right is blocked with the synthesized peptide.



Western blot analysis of the lysates from 293 cells using GLU2B antibody.