



Endo G-L1 Polyclonal Antibody

| | |
|---------------------------|--|
| Catalog No | YP-Ab-02633 |
| Isotype | IgG |
| Reactivity | Human;Rat;Mouse; |
| Applications | WB;ELISA |
| Gene Name | EXOG |
| Protein Name | Nuclease EXOG mitochondrial |
| Immunogen | The antiserum was produced against synthesized peptide derived from human ENDOGL1. AA range:171-220 |
| Specificity | Endo G-L1 Polyclonal Antibody detects endogenous levels of Endo G-L1 protein. |
| Formulation | Liquid in PBS containing 50% glycerol, 0.5% BSA and 0.02% sodium azide. |
| Source | Polyclonal, Rabbit,IgG |
| Purification | The antibody was affinity-purified from rabbit antiserum by affinity-chromatography using epitope-specific immunogen. |
| Dilution | Western Blot: 1/500 - 1/2000. ELISA: 1/40000. Not yet tested in other applications. |
| Concentration | 1 mg/ml |
| Purity | ≥90% |
| Storage Stability | -20°C/1 year |
| Synonyms | EXOG; ENDOGL1; ENDOGL2; ENGL; Nuclease EXOG; mitochondrial; Endonuclease G-like 1; Endo G-like 1 |
| Observed Band | 41kD |
| Cell Pathway | Mitochondrion inner membrane . |
| Tissue Specificity | Ubiquitous. |
| Function | cofactor:Divalent metal cations.,function:Endo/exonuclease with nicking activity towards supercoiled DNA, a preference for single stranded DNA and 5'-3' exonuclease activity.,miscellaneous:The active site contains 1 hydrated divalent metal cation that has only 1 direct interaction with the protein; all other interactions are via water molecules.,similarity:Belongs to the DNA/RNA non-specific endonuclease family.,subunit:Homodimer.,tissue specificity:Ubiquitous., |
| Background | This gene encodes an endo/exonuclease with 5'-3' exonuclease activity. The encoded enzyme catalyzes the hydrolysis of ester linkages at the 5' end of a nucleic acid chain. This enzyme is localized to the mitochondria and may play a role in programmed cell death. Alternatively spliced transcript variants have been described. A pseudogene exists on chromosome 18. [provided by RefSeq, Feb 2009], |



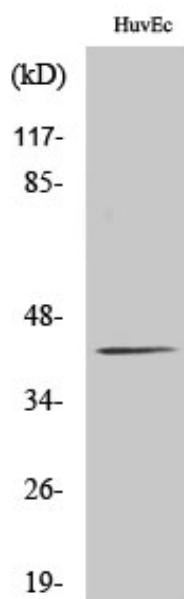
matters needing attention

Avoid repeated freezing and thawing!

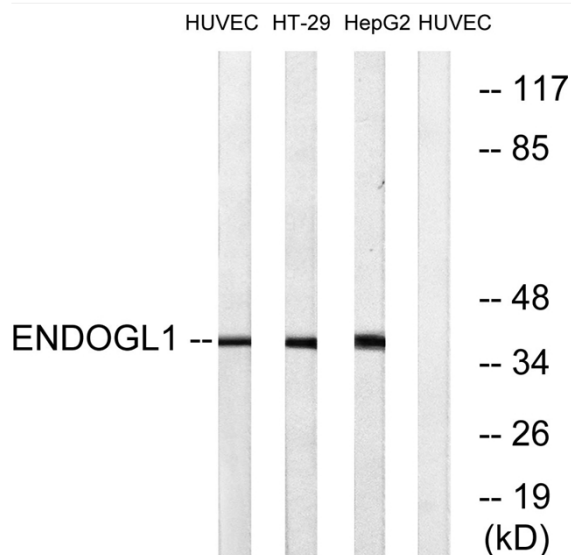
Usage suggestions

This product can be used in immunological reaction related experiments. For more information, please consult technical personnel.

Products Images



Western Blot analysis of various cells using Endo G-L1 Polyclonal Antibody



Western blot analysis of lysates from HUVEC, HT-29, and HepG2 cells, using ENDOGL1 Antibody. The lane on the right is blocked with the synthesized peptide.