



# ELOVL5 Polyclonal Antibody

|                           |   |
|---------------------------|---|
| <b>Catalog No</b>         | YP-Ab-02630   |
| <b>Isotype</b>            | IgG   |
| <b>Reactivity</b>         | Human;Rat;Mouse;  |
| <b>Applications</b>       | WB;IHC;IF;ELISA   |
| <b>Gene Name</b>          | ELOVL5  |
| <b>Protein Name</b>       | Elongation of very long chain fatty acids protein 5   |
| <b>Immunogen</b>          | The antiserum was produced against synthesized peptide derived from human ELOVL5. AA range:250-299  |
| <b>Specificity</b>        | ELOVL5 Polyclonal Antibody detects endogenous levels of ELOVL5 protein.   |
| <b>Formulation</b>        | Liquid in PBS containing 50% glycerol, 0.5% BSA and 0.02% sodium azide.   |
| <b>Source</b>             | Polyclonal, Rabbit,IgG  |
| <b>Purification</b>       | The antibody was affinity-purified from rabbit antiserum by affinity-chromatography using epitope-specific immunogen.   |
| <b>Dilution</b>           | WB: 1/500 - 1/2000. IHC: 1/100 - 1/300. ELISA: 1/40000.. IF 1:50-200  |
| <b>Concentration</b>      | 1 mg/ml   |
| <b>Purity</b>             | ≥90%  |
| <b>Storage Stability</b>  | -20°C/1 year  |
| <b>Synonyms</b>           | ELOVL5; ELOVL2; Elongation of very long chain fatty acids protein 5; 3-keto acyl-CoA synthase ELOVL5; ELOVL fatty acid elongase 5; ELOVL FA elongase 5; Fatty acid elongase 1; hELO1  |
| <b>Observed Band</b>      | 28kD  |
| <b>Cell Pathway</b>       | Endoplasmic reticulum membrane ; Multi-pass membrane protein . Cell projection, dendrite . In Purkinje cells, the protein localizes to the soma and proximal portion of the dendritic tree. .   |
| <b>Tissue Specificity</b> | Ubiquitous. Highly expressed in the adrenal gland and testis. Weakly expressed in prostate, lung and brain. Expressed in the cerebellum.  |
| <b>Function</b>           | function:May be involved in the elongation of long-chain polyunsaturated fatty acids (PUFAs).,similarity:Belongs to the ELO family.,tissue specificity:Highly expressed in the adrenal gland and testis. Weekly expressed in prostate, lung and brain.,   |
| <b>Background</b>         | This gene belongs to the ELO family. It is highly expressed in the adrenal gland and testis, and encodes a multi-pass membrane protein that is localized in the endoplasmic reticulum. This protein is involved in the elongation of long-chain polyunsaturated fatty acids. Mutations in this gene have been associated with spinocerebellar ataxia-38 (SCA38). Alternatively spliced transcript variants have been found for this gene. [provided by RefSeq, Sep 2014], |



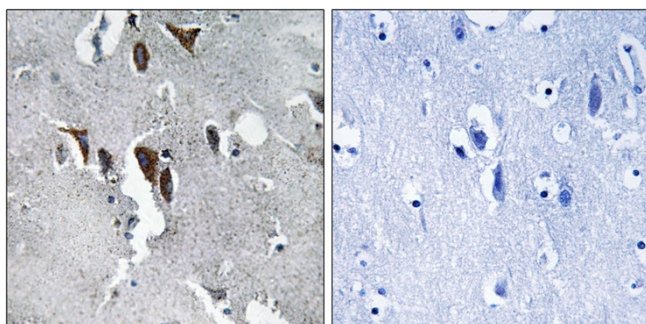
**matters needing attention**

Avoid repeated freezing and thawing!

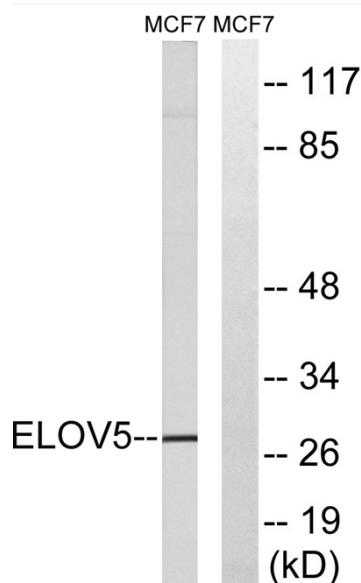
**Usage suggestions**

This product can be used in immunological reaction related experiments. For more information, please consult technical personnel.

**Products Images**



Immunohistochemistry analysis of paraffin-embedded human brain tissue, using ELOVL5 Antibody. The picture on the right is blocked with the synthesized peptide.



Western blot analysis of lysates from MCF-7 cells, using ELOVL5 Antibody. The lane on the right is blocked with the synthesized peptide.