



DHRS4 Polyclonal Antibody

Catalog No	YP-Ab-02620
Isotype	IgG
Reactivity	Human;Rat;Mouse;
Applications	WB;IHC;IF;ELISA
Gene Name	DHRS4
Protein Name	Dehydrogenase/reductase SDR family member 4
Immunogen	The antiserum was produced against synthesized peptide derived from human DHRS4. AA range:191-240
Specificity	DHRS4 Polyclonal Antibody detects endogenous levels of DHRS4 protein.
Formulation	Liquid in PBS containing 50% glycerol, 0.5% BSA and 0.02% sodium azide.
Source	Polyclonal, Rabbit,IgG
Purification	The antibody was affinity-purified from rabbit antiserum by affinity-chromatography using epitope-specific immunogen.
Dilution	WB: 1/500 - 1/2000. IHC: 1/100 - 1/300. ELISA: 1/40000.. IF 1:50-200
Concentration	1 mg/ml
Purity	≥90%
Storage Stability	-20°C/1 year
Synonyms	DHRS4; Dehydrogenase/reductase SDR family member 4; NADPH-dependent carbonyl reductase/NADP-retinol dehydrogenase; CR; PHCR; NADPH-dependent retinol dehydrogenase/reductase; NRDR; humNRDR; Peroxisomal short-chain alcohol dehydrogenase; PSCD
Observed Band	32-34kD
Cell Pathway	[Isoform 1]: Peroxisome . Isoform 4 is not peroxisomal. .; [Isoform 7]: Nucleus .
Tissue Specificity	[Isoform 1]: Predominantly expressed in normal cervix (at protein level). ; [Isoform 4]: Expressed in some neoplastic cervical tissues, but not in normal cervix (at protein level). ; [Isoform 5]: Expressed in a few neoplastic cervical tissues. ; [Isoform 6]: Expressed in a few neoplastic cervical tissues. ; [Isoform 8]: High expression in liver.
Function	catalytic activity:R-CHOH-R' + NADP(+) = R-CO-R' + NADPH.,function:Reduces all-trans-retinal and 9-cis retinal. Can also catalyze the oxidation of all-trans-retinol with NADP as co-factor, but with much lower efficiency. Reduces alkyl phenyl ketones and alpha-dicarbonyl compounds with aromatic rings, such as pyrimidine-4-aldehyde, 3-benzoylpyridine, 4-benzoylpyridine, menadione and 4-hexanoylpyridine. Has no activity towards aliphatic aldehydes and ketones.,miscellaneous:Inhibited by kaempferol, quercetin, genistein and myristic acid.,similarity:Belongs to the short-chain dehydrogenases/reductases (SDR)



family.,subcellular location:Isoform 1 is peroxisomal, while isoform 4 is not.,subunit:Homotetramer.,tissue specificity:Isoform 1 is predominantly expressed in normal cervix (at protein level). Isoform 4 is expressed in some neoplastic cervical tissues, but not in normal cervix (at protei

Background

catalytic activity:R-CHOH-R' + NADP(+) = R-CO-R' + NADPH.,function:Reduces all-trans-retinal and 9-cis retinal. Can also catalyze the oxidation of all-trans-retinol with NADP as co-factor, but with much lower efficiency. Reduces alkyl phenyl ketones and alpha-dicarbonyl compounds with aromatic rings, such as pyrimidine-4-aldehyde, 3-benzoylpyridine, 4-benzoylpyridine, menadione and 4-hexanoylpyridine. Has no activity towards aliphatic aldehydes and ketones.,miscellaneous:Inhibited by kaempferol, quercetin, genistein and myristic acid.,similarity:Belongs to the short-chain dehydrogenases/reductases (SDR) family.,subcellular location:Isoform 1 is peroxisomal, while isoform 4 is not.,subunit:Homotetramer.,tissue specificity:Isoform 1 is predominantly expressed in normal cervix (at protein level). Isoform 4 is expressed in some neoplastic cervical tissues, but not in normal cervix (at protein level). Isoforms 5 and 6 are expressed in a few neoplastic cervical tissues.,

matters needing attention

Avoid repeated freezing and thawing!

Usage suggestions

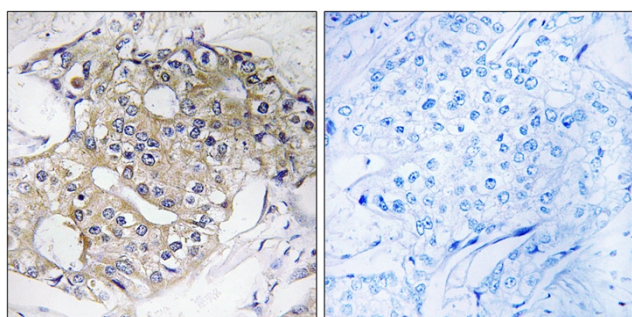
This product can be used in immunological reaction related experiments. For more information, please consult technical personnel.



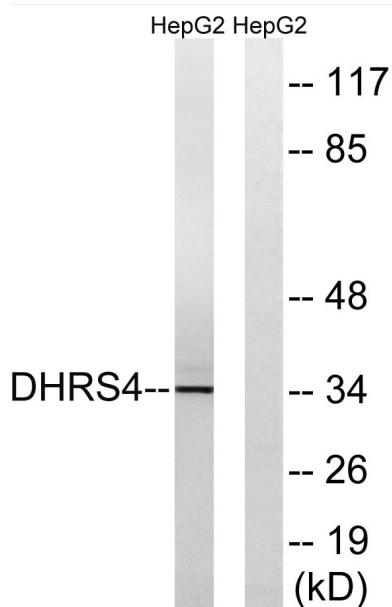
Products Images



Western Blot analysis of various cells using DHRS4 Polyclonal Antibody diluted at 1:2000



Immunohistochemistry analysis of paraffin-embedded human breast carcinoma tissue, using DHRS4 Antibody. The picture on the right is blocked with the synthesized peptide.



Western blot analysis of lysates from HepG2 cells, using DHRS4 Antibody. The lane on the right is blocked with the synthesized peptide.