

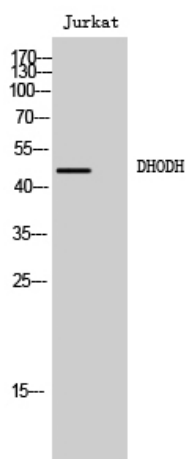


DHODH Polyclonal Antibody

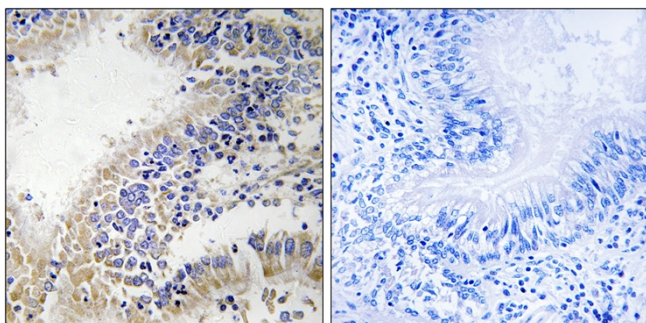
Catalog No	YP-Ab-02616
Isotype	IgG
Reactivity	Human;Rat;Mouse;
Applications	WB;IHC;IF;ELISA
Gene Name	DHODH
Protein Name	Dihydroorotate dehydrogenase
Immunogen	The antiserum was produced against synthesized peptide derived from human DHODH. AA range:211-260
Specificity	DHODH Polyclonal Antibody detects endogenous levels of DHODH protein.
Formulation	Liquid in PBS containing 50% glycerol, 0.5% BSA and 0.02% sodium azide.
Source	Polyclonal, Rabbit,IgG
Purification	The antibody was affinity-purified from rabbit antiserum by affinity-chromatography using epitope-specific immunogen.
Dilution	WB: 1/500 - 1/2000. IHC: 1/100 - 1/300. ELISA: 1/40000.. IF 1:50-200
Concentration	1 mg/ml
Purity	≥90%
Storage Stability	-20°C/1 year
Synonyms	DHODH; Dihydroorotate dehydrogenase; quinone); mitochondrial; DHOdehase; Dihydroorotate oxidase
Observed Band	48kD
Cell Pathway	Mitochondrion inner membrane ; Single-pass membrane protein .
Tissue Specificity	Skin,Testis,
Function	catalytic activity:(S)-dihydroorotate + O(2) = orotate + H(2)O(2)..cofactor: Binds 1 FAD per subunit..pathway:Pyrimidine metabolism; UMP biosynthesis via de novo pathway; UMP from HCO(3)(-): step 4/6..similarity:Belongs to the dihydroorotate dehydrogenase family.,
Background	The protein encoded by this gene catalyzes the fourth enzymatic step, the ubiquinone-mediated oxidation of dihydroorotate to orotate, in de novo pyrimidine biosynthesis. This protein is a mitochondrial protein located on the outer surface of the inner mitochondrial membrane. [provided by RefSeq, Jul 2008],
matters needing attention	Avoid repeated freezing and thawing!

Usage suggestions

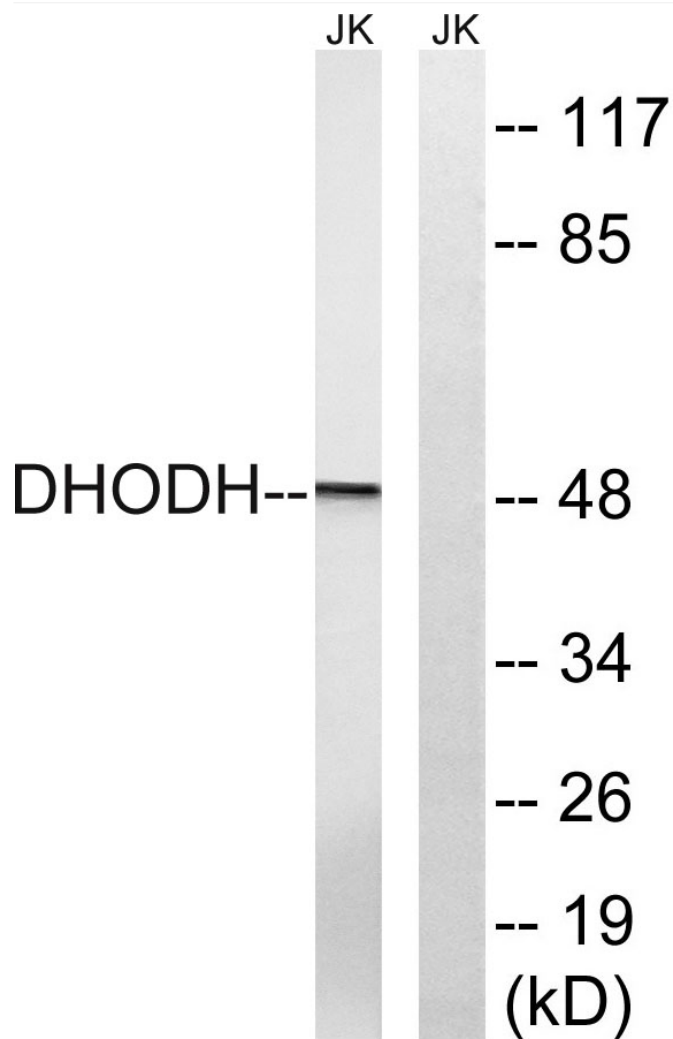
This product can be used in immunological reaction related experiments. For more information, please consult technical personnel.

Products Images

Western Blot analysis of Jurkat cells using DHODH Polyclonal Antibody



Immunohistochemistry analysis of paraffin-embedded human breast carcinoma tissue, using DHODH Antibody. The picture on the right is blocked with the synthesized peptide.



Western blot analysis of lysates from Jurkat cells, using DHODH Antibody. The lane on the right is blocked with the synthesized peptide.