

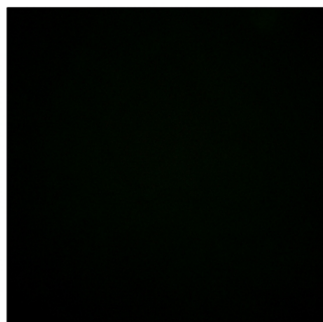
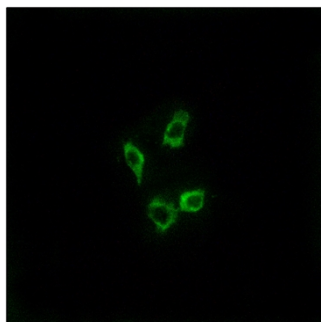


CYP4Z1 Polyclonal Antibody

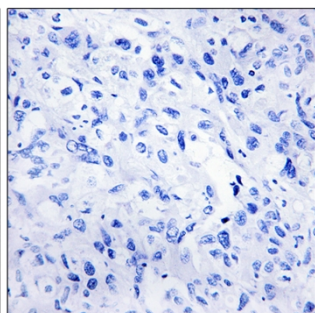
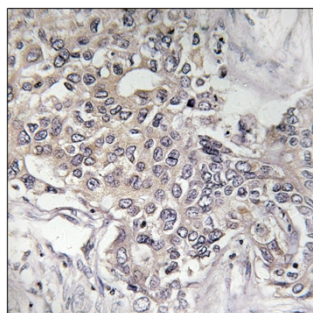
Catalog No	YP-Ab-02606
Isotype	IgG
Reactivity	Human;Rat;Mouse;
Applications	WB;IHC;IF;ELISA
Gene Name	CYP4Z1
Protein Name	Cytochrome P450 4Z1
Immunogen	The antiserum was produced against synthesized peptide derived from human Cytochrome P450 4Z1. AA range:71-120
Specificity	CYP4Z1 Polyclonal Antibody detects endogenous levels of CYP4Z1 protein.
Formulation	Liquid in PBS containing 50% glycerol, 0.5% BSA and 0.02% sodium azide.
Source	Polyclonal, Rabbit,IgG
Purification	The antibody was affinity-purified from rabbit antiserum by affinity-chromatography using epitope-specific immunogen.
Dilution	Immunohistochemistry: 1/100 - 1/300. Immunofluorescence: 1/200 - 1/1000. ELISA: 1/20000. Not yet tested in other applications.
Concentration	1 mg/ml
Purity	≥90%
Storage Stability	-20°C/1 year
Synonyms	CYP4Z1; Cytochrome P450 4Z1; CYP4Z1
Observed Band	
Cell Pathway	Endoplasmic reticulum membrane ; Single-pass type II membrane protein . Microsome membrane ; Single-pass type II membrane protein .
Tissue Specificity	Preferentially detected in breast carcinoma tissue and mammary gland, whereas only marginal expression is found in all other tested tissues.
Function	oxidation reduction,
Background	CYP4Z1 encodes a member of the cytochrome P450 superfamily of enzymes. The cytochrome P450 proteins are monooxygenases which catalyze many reactions involved in drug metabolism and synthesis of cholesterol, steroids and other lipids. CYP4Z1 is part of a cluster of cytochrome P450 genes on chromosome 1p33.
matters needing attention	Avoid repeated freezing and thawing!
Usage suggestions	This product can be used in immunological reaction related experiments. For more information, please consult technical personnel.



Products Images



Immunofluorescence analysis of HUVEC cells, using Cytochrome P450 4Z1 Antibody. The picture on the right is blocked with the synthesized peptide.



Immunohistochemistry analysis of paraffin-embedded human liver carcinoma tissue, using Cytochrome P450 4Z1 Antibody. The picture on the right is blocked with the synthesized peptide.