



CYP4F11 Polyclonal Antibody

Catalog No	YP-Ab-02601
Isotype	IgG
Reactivity	Human;Rat;Mouse;
Applications	WB;ELISA
Gene Name	CYP4F11
Protein Name	Cytochrome P450 4F11
Immunogen	The antiserum was produced against synthesized peptide derived from human Cytochrome P450 4F11. AA range:341-390
Specificity	CYP4F11 Polyclonal Antibody detects endogenous levels of CYP4F11 protein.
Formulation	Liquid in PBS containing 50% glycerol, 0.5% BSA and 0.02% sodium azide.
Source	Polyclonal, Rabbit,IgG
Purification	The antibody was affinity-purified from rabbit antiserum by affinity-chromatography using epitope-specific immunogen.
Dilution	Western Blot: 1/500 - 1/2000. ELISA: 1/5000. Not yet tested in other applications.
Concentration	1 mg/ml
Purity	≥90%
Storage Stability	-20°C/1 year
Synonyms	CYP4F11; Cytochrome P450 4F11; CYP11F11
Observed Band	60kD
Cell Pathway	Endoplasmic reticulum membrane ; Single-pass membrane protein . Microsome membrane ; Single-pass membrane protein .
Tissue Specificity	Expressed mainly in human liver, followed by kidney, heart, and skeletal muscle.
Function	catalytic activity:RH + reduced flavoprotein + O(2) = ROH + oxidized flavoprotein + H(2)O.,cofactor:Heme group.,similarity:Belongs to the cytochrome P450 family.,tissue specificity:Expressed mainly in human liver, followed by kidney, heart, and skeletal muscle.,
Background	cytochrome P450 family 4 subfamily F member 11(CYP4F11) Homo sapiens This gene, CYP4F11, encodes a member of the cytochrome P450 superfamily of enzymes. The cytochrome P450 proteins are monooxygenases which catalyze many reactions involved in drug metabolism and synthesis of cholesterol, steroids and other lipids. This gene is part of a cluster of cytochrome P450 genes on chromosome 19. Another member of this family, CYP4F2, is approximately 16 kb away. Alternatively spliced transcript variants encoding the same protein have been found for this gene. [provided by RefSeq, Jul 2008],



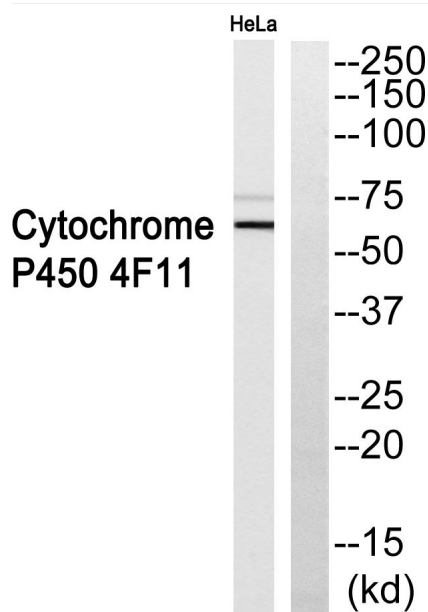
matters needing attention

Avoid repeated freezing and thawing!

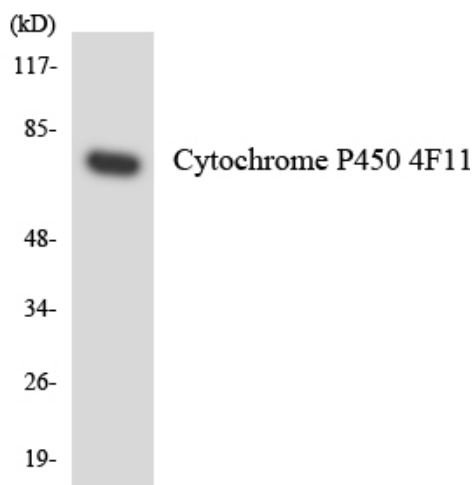
Usage suggestions

This product can be used in immunological reaction related experiments. For more information, please consult technical personnel.

Products Images



Western blot analysis of Cytochrome P450 4F11 Antibody. The lane on the right is blocked with the Cytochrome P450 4F11 peptide.



Western blot analysis of the lysates from COLO205 cells using Cytochrome P450 4F11 antibody.