



# CYP4B1 Polyclonal Antibody

<b>Catalog No</b>	YP-Ab-02600
<b>Isotype</b>	IgG
<b>Reactivity</b>	Human;Rat;Mouse;
<b>Applications</b>	WB;IHC;IF;ELISA
<b>Gene Name</b>	CYP4B1
<b>Protein Name</b>	Cytochrome P450 4B1
<b>Immunogen</b>	The antiserum was produced against synthesized peptide derived from human Cytochrome P450 4B1. AA range:141-190
<b>Specificity</b>	CYP4B1 Polyclonal Antibody detects endogenous levels of CYP4B1 protein.
<b>Formulation</b>	Liquid in PBS containing 50% glycerol, 0.5% BSA and 0.02% sodium azide.
<b>Source</b>	Polyclonal, Rabbit,IgG
<b>Purification</b>	The antibody was affinity-purified from rabbit antiserum by affinity-chromatography using epitope-specific immunogen.
<b>Dilution</b>	WB: 1/500 - 1/2000. IHC: 1/100 - 1/300. ELISA: 1/40000.. IF 1:50-200
<b>Concentration</b>	1 mg/ml
<b>Purity</b>	≥90%
<b>Storage Stability</b>	-20°C/1 year
<b>Synonyms</b>	CYP4B1; Cytochrome P450 4B1; CYP4B1; Cytochrome P450-HP
<b>Observed Band</b>	50kD
<b>Cell Pathway</b>	Endoplasmic reticulum membrane; Peripheral membrane protein. Microsome membrane; Peripheral membrane protein.
<b>Tissue Specificity</b>	Detected in the liver and lung (at protein level).
<b>Function</b>	catalytic activity:RH + reduced flavoprotein + O(2) = ROH + oxidized flavoprotein + H(2)O.,cofactor:Heme group.,function:Cytochromes P450 are a group of heme-thiolate monooxygenases. In liver microsomes, this enzyme is involved in an NADPH-dependent electron transport pathway. It oxidizes a variety of structurally unrelated compounds, including steroids, fatty acids, and xenobiotics.,induction:P450 can be induced to high levels in liver and other tissues by various foreign compounds, including drugs, pesticides, and carcinogens.,online information:CYP4B1 alleles,similarity:Belongs to the cytochrome P450 family.,
<b>Background</b>	This gene encodes a member of the cytochrome P450 superfamily of enzymes. The cytochrome P450 proteins are monooxygenases which catalyze many reactions involved in drug metabolism and synthesis of cholesterol, steroids and other lipids. This protein localizes to the endoplasmic reticulum. In rodents, the homologous protein has been shown to metabolize certain carcinogens; however,



the specific function of the human protein has not been determined. Multiple transcript variants have been found for this gene. [provided by RefSeq, Jan 2016],

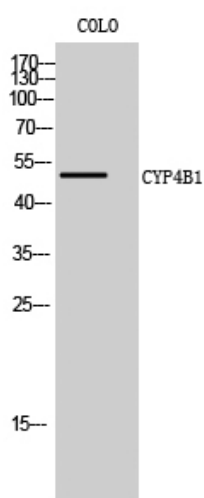
#### matters needing attention

Avoid repeated freezing and thawing!

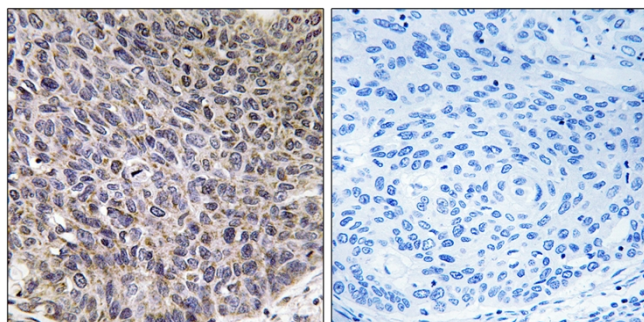
#### Usage suggestions

This product can be used in immunological reaction related experiments. For more information, please consult technical personnel.

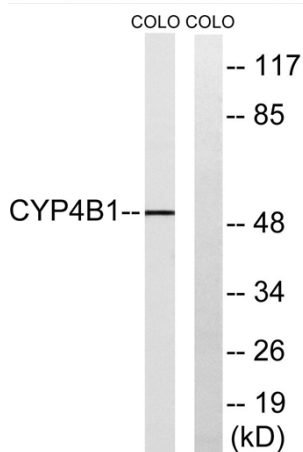
### Products Images



Western Blot analysis of COLO cells using CYP4B1 Polyclonal Antibody



Immunohistochemistry analysis of paraffin-embedded human lung carcinoma tissue, using Cytochrome P450 4B1 Antibody. The picture on the right is blocked with the synthesized peptide.



Western blot analysis of lysates from COLO cells, using Cytochrome P450 4B1 Antibody. The lane on the right is blocked with the synthesized peptide.