



CYP2S1 Polyclonal Antibody

Catalog No	YP-Ab-02590
Isotype	IgG
Reactivity	Human;Mouse
Applications	WB;IHC;IF;ELISA
Gene Name	CYP2S1
Protein Name	Cytochrome P450 2S1
Immunogen	The antiserum was produced against synthesized peptide derived from human Cytochrome P450 2S1. AA range:181-230
Specificity	CYP2S1 Polyclonal Antibody detects endogenous levels of CYP2S1 protein.
Formulation	Liquid in PBS containing 50% glycerol, 0.5% BSA and 0.02% sodium azide.
Source	Polyclonal, Rabbit,IgG
Purification	The antibody was affinity-purified from rabbit antiserum by affinity-chromatography using epitope-specific immunogen.
Dilution	Western Blot: 1/500 - 1/2000. Immunohistochemistry: 1/100 - 1/300. Immunofluorescence: 1/200 - 1/1000. ELISA: 1/5000. Not yet tested in other applications.
Concentration	1 mg/ml
Purity	≥90%
Storage Stability	-20°C/1 year
Synonyms	CYP2S1; Cytochrome P450 2S1; CYP11S1
Observed Band	56kD
Cell Pathway	Endoplasmic reticulum membrane ; Peripheral membrane protein . Microsome membrane ; Peripheral membrane protein .
Tissue Specificity	Expressed at higher levels in extrahepatic tissues including trachea, lung, stomach, small intestine, colon, kidney, breast, placenta and spleen (PubMed:11181079, PubMed:12711469). Expressed in peripheral blood leukocytes (PubMed:11181079). Constitutively expressed in skin (at protein level) (PubMed:12711469).
Function	catalytic activity:RH + reduced flavoprotein + O(2) = ROH + oxidized flavoprotein + H(2)O.,cofactor:Heme group.,function:Has a potential importance for extrahepatic xenobiotic metabolism.,similarity:Belongs to the cytochrome P450 family.,tissue specificity:High level of expression in trachea, lung, stomach, small intestine, and spleen.,
Background	This gene encodes a member of the cytochrome P450 superfamily of enzymes. The cytochrome P450 proteins are monooxygenases which catalyze many reactions involved in drug metabolism and synthesis of cholesterol, steroids and other lipids. This protein localizes to the endoplasmic reticulum. In rodents, the homologous protein has been shown to metabolize certain carcinogens; however,



the specific function of the human protein has not been determined. [provided by RefSeq, Jul 2008],

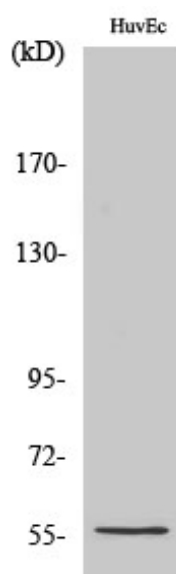
matters needing attention

Avoid repeated freezing and thawing!

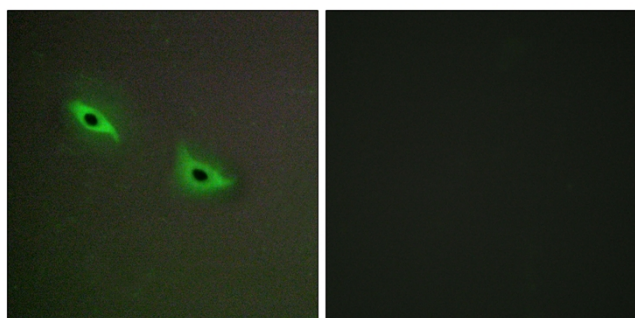
Usage suggestions

This product can be used in immunological reaction related experiments. For more information, please consult technical personnel.

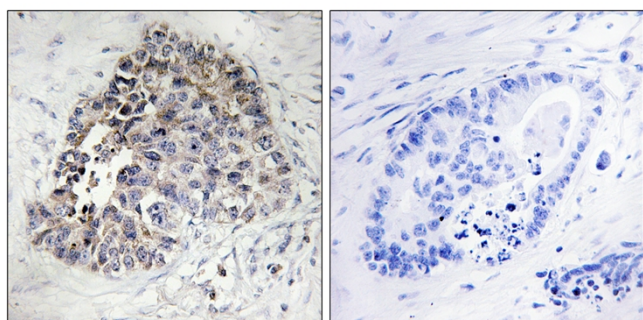
Products Images



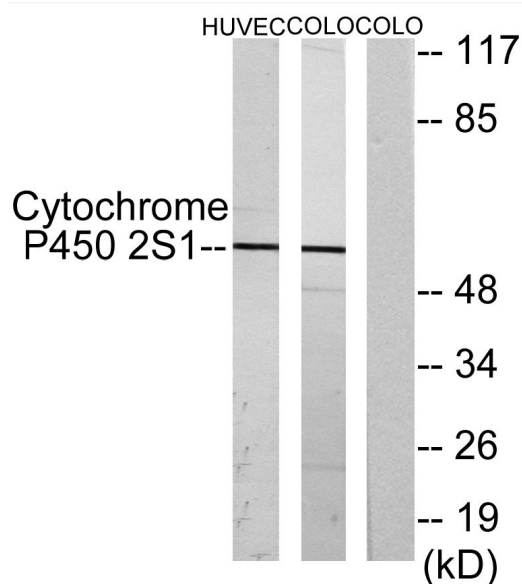
Western Blot analysis of various cells using CYP2S1 Polyclonal Antibody diluted at 1:2000



Immunofluorescence analysis of A549 cells, using Cytochrome P450 2S1 Antibody. The picture on the right is blocked with the synthesized peptide.



Immunohistochemistry analysis of paraffin-embedded human lung carcinoma tissue, using Cytochrome P450 2S1 Antibody. The picture on the right is blocked with the synthesized peptide.



Western blot analysis of lysates from HUVEC and COLO cells, using Cytochrome P450 2S1 Antibody. The lane on the right is blocked with the synthesized peptide.