



# CYP26C1 Polyclonal Antibody

<b>Catalog No</b>	YP-Ab-02573
<b>Isotype</b>	IgG
<b>Reactivity</b>	Human;Rat;Mouse;
<b>Applications</b>	IHC;IF;ELISA
<b>Gene Name</b>	CYP26C1
<b>Protein Name</b>	Cytochrome P450 26C1
<b>Immunogen</b>	The antiserum was produced against synthesized peptide derived from human CYP26C1. AA range:41-90
<b>Specificity</b>	CYP26C1 Polyclonal Antibody detects endogenous levels of CYP26C1 protein.
<b>Formulation</b>	Liquid in PBS containing 50% glycerol, 0.5% BSA and 0.02% sodium azide.
<b>Source</b>	Polyclonal, Rabbit,IgG
<b>Purification</b>	The antibody was affinity-purified from rabbit antiserum by affinity-chromatography using epitope-specific immunogen.
<b>Dilution</b>	IHC: 1/100 - 1/300. ELISA: 1/40000.. IF 1:50-200
<b>Concentration</b>	1 mg/ml
<b>Purity</b>	≥90%
<b>Storage Stability</b>	-20°C/1 year
<b>Synonyms</b>	CYP26C1; Cytochrome P450 26C1
<b>Observed Band</b>	
<b>Cell Pathway</b>	Membrane ; Single-pass membrane protein .
<b>Tissue Specificity</b>	Detected in most tissues at very low level.
<b>Function</b>	cofactor:Heme group.,function:Plays a role in retinoic acid metabolism. Acts on retinoids, including all-trans-retinoic acid (RA) and its stereoisomer 9-cis-RA (preferred substrate).,induction:By retinoic acid.,similarity:Belongs to the cytochrome P450 family.,tissue specificity:Detected in most tissues at very low level.,
<b>Background</b>	cytochrome P450 family 26 subfamily C member 1(CYP26C1) Homo sapiens This gene encodes a member of the cytochrome P450 superfamily of enzymes. The cytochrome P450 proteins are monooxygenases which catalyze many reactions involved in drug metabolism and synthesis of cholesterol, steroids and other lipids. This enzyme is involved in the catabolism of all-trans- and 9-cis-retinoic acid, and thus contributes to the regulation of retinoic acid levels in cells and tissues. This gene is adjacent to a related gene on chromosome 10q23.33. [provided by RefSeq, Jul 2008],

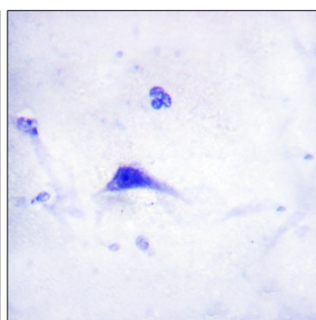
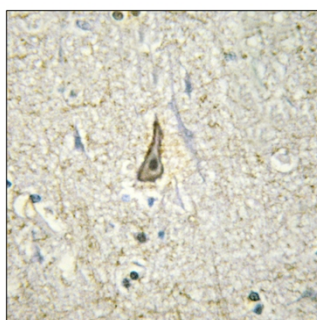
**matters needing attention**

Avoid repeated freezing and thawing!

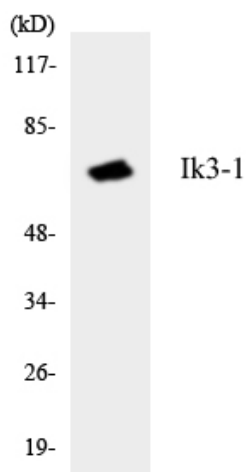
**Usage suggestions**

This product can be used in immunological reaction related experiments. For more information, please consult technical personnel.

## Products Images



Immunohistochemistry analysis of paraffin-embedded human brain, using Cytochrome P450 26C1 Antibody. The picture on the right is blocked with the synthesized peptide.



Western blot analysis of the lysates from HeLa cells using Ik3-1 antibody.