



# CYP20A1 Polyclonal Antibody

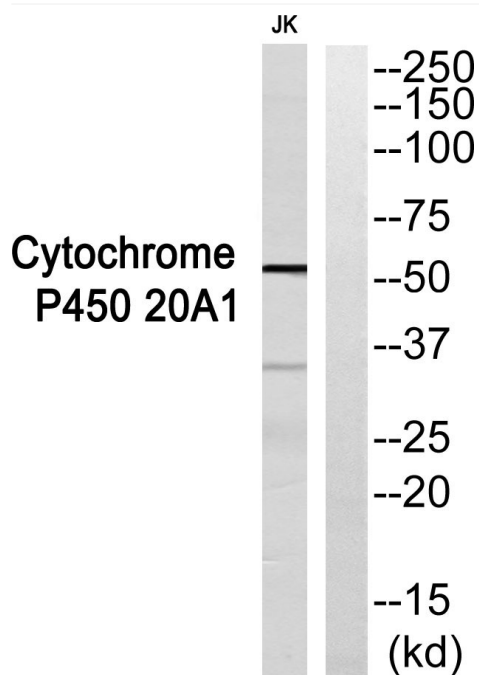
<b>Catalog No</b>	YP-Ab-02566
<b>Isotype</b>	IgG
<b>Reactivity</b>	Human;Rat;Mouse;
<b>Applications</b>	WB;ELISA
<b>Gene Name</b>	CYP20A1
<b>Protein Name</b>	Cytochrome P450 20A1
<b>Immunogen</b>	The antiserum was produced against synthesized peptide derived from human Cytochrome P450 20A1. AA range:191-240
<b>Specificity</b>	CYP20A1 Polyclonal Antibody detects endogenous levels of CYP20A1 protein.
<b>Formulation</b>	Liquid in PBS containing 50% glycerol, 0.5% BSA and 0.02% sodium azide.
<b>Source</b>	Polyclonal, Rabbit,IgG
<b>Purification</b>	The antibody was affinity-purified from rabbit antiserum by affinity-chromatography using epitope-specific immunogen.
<b>Dilution</b>	Western Blot: 1/500 - 1/2000. ELISA: 1/40000. Not yet tested in other applications.
<b>Concentration</b>	1 mg/ml
<b>Purity</b>	≥90%
<b>Storage Stability</b>	-20°C/1 year
<b>Synonyms</b>	CYP20A1; Cytochrome P450 20A1
<b>Observed Band</b>	53kD
<b>Cell Pathway</b>	Membrane ; Single-pass membrane protein .
<b>Tissue Specificity</b>	Blood,Lung,Pheochromocytoma,Placenta,Stomach,
<b>Function</b>	catalytic activity:RH + reduced flavoprotein + O(2) = ROH + oxidized flavoprotein + H(2)O.,cofactor:Heme group.,similarity:Belongs to the cytochrome P450 family.,
<b>Background</b>	cytochrome P450 family 20 subfamily A member 1(CYP20A1) Homo sapiens This gene encodes a member of the cytochrome P450 superfamily of enzymes. The cytochrome P450 proteins are monooxygenases that catalyze many reactions involved in drug metabolism and synthesis of cholesterol, steroids and other lipids. This protein lacks one amino acid of the conserved heme binding site. It also lacks the conserved I-helix motif AGX(D,E)T, suggesting that its substrate may carry its own oxygen. [provided by RefSeq, Jul 2008],
<b>matters needing attention</b>	Avoid repeated freezing and thawing!



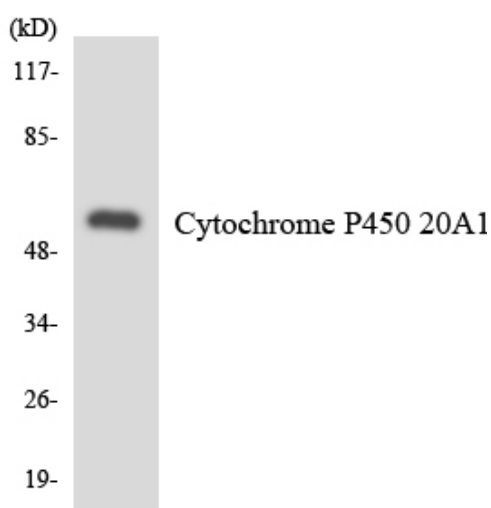
### Usage suggestions

This product can be used in immunological reaction related experiments. For more information, please consult technical personnel.

## Products Images



Western blot analysis of Cytochrome P450 20A1 Antibody. The lane on the right is blocked with the Cytochrome P450 20A1 peptide.



Western blot analysis of the lysates from HUVEC cells using Cytochrome P450 20A1 antibody.