



CYP17A1 Polyclonal Antibody

Catalog No	YP-Ab-02561
Isotype	IgG
Reactivity	Human
Applications	WB;IHC;IF;ELISA
Gene Name	CYP17A1
Protein Name	Steroid 17-alpha-hydroxylase/17,20 lyase
Immunogen	The antiserum was produced against synthesized peptide derived from human Cytochrome P450 17A1. AA range:221-270
Specificity	CYP17A1 Polyclonal Antibody detects endogenous levels of CYP17A1 protein.
Formulation	Liquid in PBS containing 50% glycerol, 0.5% BSA and 0.02% sodium azide.
Source	Polyclonal, Rabbit,IgG
Purification	The antibody was affinity-purified from rabbit antiserum by affinity-chromatography using epitope-specific immunogen.
Dilution	Western Blot: 1/500 - 1/2000. Immunohistochemistry: 1/100 - 1/300. Immunofluorescence: 1/200 - 1/1000. ELISA: 1/10000. Not yet tested in other applications.
Concentration	1 mg/ml
Purity	≥90%
Storage Stability	-20°C/1 year
Synonyms	CYP17A1; CYP17; S17AH; Steroid 17-alpha-hydroxylase/17; 20 lyase; CYPXVII; Cytochrome P450 17A1; Cytochrome P450-C17; Cytochrome P450c17; Steroid 17-alpha-monooxygenase
Observed Band	50kD
Cell Pathway	Endoplasmic reticulum membrane . Microsome membrane .
Tissue Specificity	Brain,Corpus callosum,
Function	catalytic activity:A steroid + AH(2) + O(2) = a 17-alpha-hydroxysteroid + A + H(2)O.,cofactor:Heme group.,disease:Defects in CYP17A1 are the cause of adrenal hyperplasia type 5 (AH5) [MIM:202110]. AH5 is a form of congenital adrenal hyperplasia, a common recessive disease due to defective synthesis of cortisol. Congenital adrenal hyperplasia is characterized by androgen excess leading to ambiguous genitalia in affected females, rapid somatic growth during childhood in both sexes with premature closure of the epiphyses and short adult stature. Four clinical types: "salt wasting" (SW, the most severe type), "simple virilizing" (SV, less severely affected patients), with normal aldosterone biosynthesis, "non-classic form" or late onset (NC or LOAH), and "cryptic" (asymptomatic).,enzyme regulation:Regulated predominantly by intracellular cAMP levels.,function:Conversion of pregnenolone and p

**Background**

cytochrome P450 family 17 subfamily A member 1(CYP17A1) Homo sapiens
This gene encodes a member of the cytochrome P450 superfamily of enzymes. The cytochrome P450 proteins are monooxygenases which catalyze many reactions involved in drug metabolism and synthesis of cholesterol, steroids and other lipids. This protein localizes to the endoplasmic reticulum. It has both 17alpha-hydroxylase and 17,20-lyase activities and is a key enzyme in the steroidogenic pathway that produces progestins, mineralocorticoids, glucocorticoids, androgens, and estrogens. Mutations in this gene are associated with isolated steroid-17 alpha-hydroxylase deficiency, 17-alpha-hydroxylase/17,20-lyase deficiency, pseudohermaphroditism, and adrenal hyperplasia. [provided by RefSeq, Jul 2008],

matters needing attention

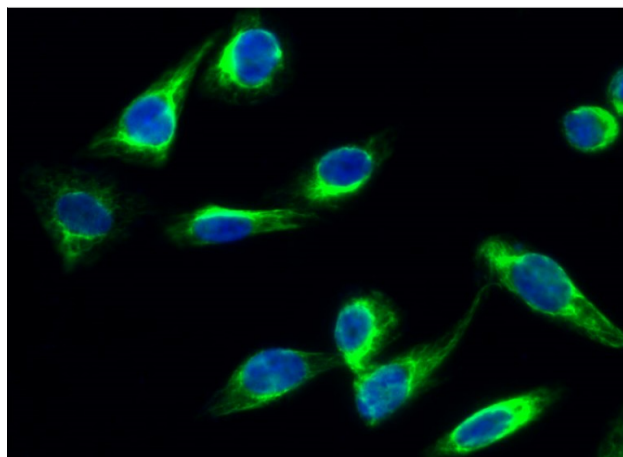
Avoid repeated freezing and thawing!

Usage suggestions

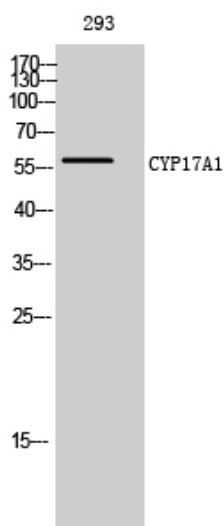
This product can be used in immunological reaction related experiments. For more information, please consult technical personnel.



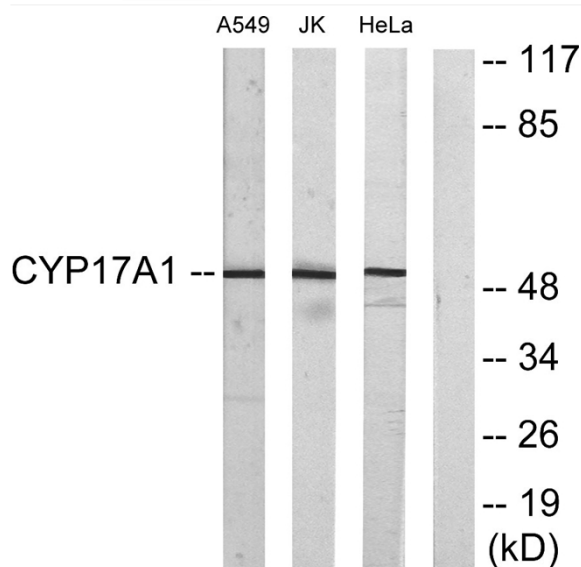
Products Images



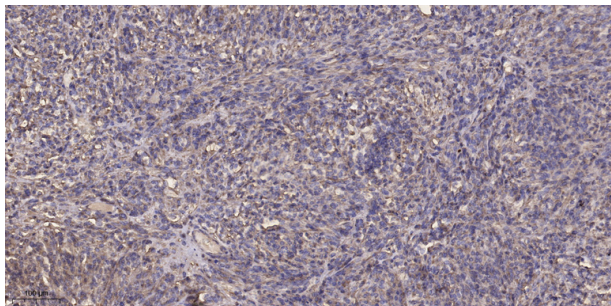
Immunofluorescence analysis of HeLa cell. 1, CYP17A1 Polyclonal Antibody (green) was diluted at 1:200 (4° overnight). 2, Goat Anti Rabbit Alexa Fluor 488 Catalog: RS3211 was diluted at 1:1000 (room temperature, 50min). 3 DAPI (blue) 10min.



Western Blot analysis of 293 cells using CYP17A1 Polyclonal Antibody diluted at 1:2000



Western blot analysis of lysates from Jurkat, A549, and HeLa cells, using Cytochrome P450 17A1 Antibody. The lane on the right is blocked with the synthesized peptide.



Immunohistochemical analysis of paraffin-embedded human Colon cancer. 1, Antibody was diluted at 1:200(4° overnight). 2, Tris-EDTA, pH9.0 was used for antigen retrieval. 3, Secondary antibody was diluted at 1:200(room temperature, 45min).