



CYB5R1 Polyclonal Antibody

Catalog No	YP-Ab-02557
Isotype	IgG
Reactivity	Human;Mouse;Rat
Applications	WB;ELISA
Gene Name	CYB5R1
Protein Name	NADH-cytochrome b5 reductase 1
Immunogen	The antiserum was produced against synthesized peptide derived from human CYB5R1. AA range:9-58
Specificity	CYB5R1 Polyclonal Antibody detects endogenous levels of CYB5R1 protein.
Formulation	Liquid in PBS containing 50% glycerol, 0.5% BSA and 0.02% sodium azide.
Source	Polyclonal, Rabbit,IgG
Purification	The antibody was affinity-purified from rabbit antiserum by affinity-chromatography using epitope-specific immunogen.
Dilution	Western Blot: 1/500 - 1/2000. ELISA: 1/20000. Not yet tested in other applications.
Concentration	1 mg/ml
Purity	≥90%
Storage Stability	-20°C/1 year
Synonyms	CYB5R1; NQO3A2; NADH-cytochrome b5 reductase 1; b5R.1; Humb5R2; NAD(P)H:quinone oxidoreductase type 3 polypeptide A2
Observed Band	34kD
Cell Pathway	Membrane ; Single-pass membrane protein .
Tissue Specificity	Widely expressed.
Function	catalytic activity:NADH + 2 ferricytochrome b5 = NAD(+) + H(+) + 2 ferrocyanochrome b5.,cofactor:FAD.,function:NADH-cytochrome b5 reductases are involved in desaturation and elongation of fatty acids, cholesterol biosynthesis, drug metabolism, and, in erythrocyte, methemoglobin reduction.,similarity:Belongs to the flavoprotein pyridine nucleotide cytochrome reductase family.,similarity:Contains 1 FAD-binding FR-type domain.,tissue specificity:Widely expressed.,
Background	catalytic activity:NADH + 2 ferricytochrome b5 = NAD(+) + H(+) + 2 ferrocyanochrome b5.,cofactor:FAD.,function:NADH-cytochrome b5 reductases are involved in desaturation and elongation of fatty acids, cholesterol biosynthesis, drug metabolism, and, in erythrocyte, methemoglobin reduction.,similarity:Belongs to the flavoprotein pyridine nucleotide cytochrome reductase family.,similarity:Contains 1 FAD-binding FR-type domain.,tissue



specificity:Widely expressed.,

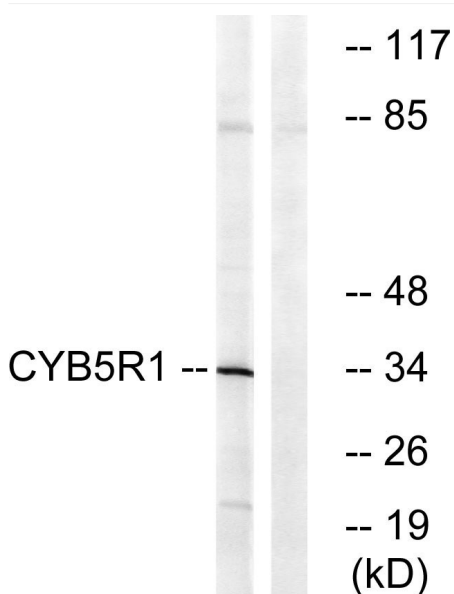
matters needing attention

Avoid repeated freezing and thawing!

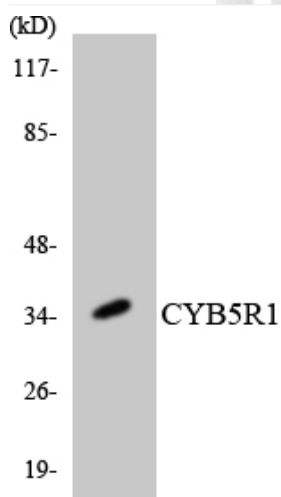
Usage suggestions

This product can be used in immunological reaction related experiments. For more information, please consult technical personnel.

Products Images



Western blot analysis of lysates from RAW264.7 cells, using CYB5R1 Antibody. The lane on the right is blocked with the synthesized peptide.



Western blot analysis of the lysates from K562 cells using CYB5R1 antibody.