



CTPS Polyclonal Antibody

Catalog No	YP-Ab-02556
Isotype	IgG
Reactivity	Human;Mouse;Rat
Applications	WB;IHC;IF;ELISA
Gene Name	CTPS1
Protein Name	CTP synthase 1
Immunogen	The antiserum was produced against synthesized peptide derived from human CTPS. AA range:60-109
Specificity	CTPS Polyclonal Antibody detects endogenous levels of CTPS protein.
Formulation	Liquid in PBS containing 50% glycerol, 0.5% BSA and 0.02% sodium azide.
Source	Polyclonal, Rabbit,IgG
Purification	The antibody was affinity-purified from rabbit antiserum by affinity-chromatography using epitope-specific immunogen.
Dilution	WB: 1/500 - 1/2000. IHC: 1/100 - 1/300. ELISA: 1/10000.. IF 1:50-200
Concentration	1 mg/ml
Purity	≥90%
Storage Stability	-20°C/1 year
Synonyms	CTPS1; CTPS; CTP synthase 1; CTP synthetase 1; UTP--ammonia ligase 1
Observed Band	67kD
Cell Pathway	Cytoplasm, cytosol . Mainly cytosolic but when active detected in long filamentous structures (PubMed:25223282). Co-localizes with TNK2 in the cytosolic filaments (By similarity). .
Tissue Specificity	Widely expressed.
Function	catalytic activity:ATP + UTP + NH(3) = ADP + phosphate + CTP.,enzyme regulation:Activated by GTP and inhibited by CTP.,function:Catalyzes the ATP-dependent amination of UTP to CTP with either L-glutamine or ammonia as the source of nitrogen.,pathway:Pyrimidine metabolism; CTP biosynthesis via de novo pathway; CTP from UDP: step 2/2.,similarity:Belongs to the CTP synthase family.,similarity:Contains 1 glutamine amidotransferase type-1 domain.,
Background	This gene encodes an enzyme responsible for the catalytic conversion of UTP (uridine triphosphate) to CTP (cytidine triphosphate). This reaction is an important step in the biosynthesis of phospholipids and nucleic acids. Activity of this protein is important in the immune system, and loss of function of this gene has been associated with immunodeficiency. Alternative splicing results in multiple transcript variants. [provided by RefSeq, Jul 2014],



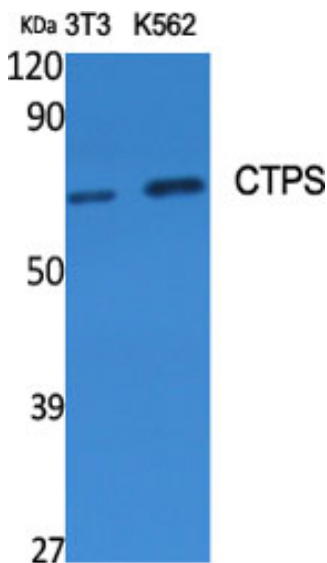
matters needing attention

Avoid repeated freezing and thawing!

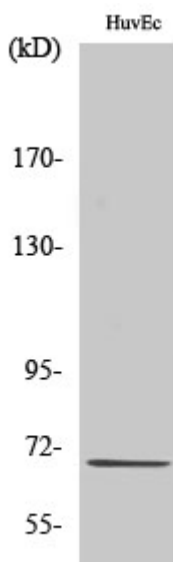
Usage suggestions

This product can be used in immunological reaction related experiments. For more information, please consult technical personnel.

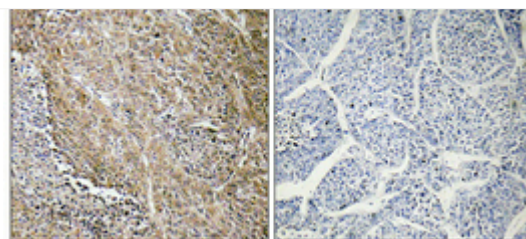
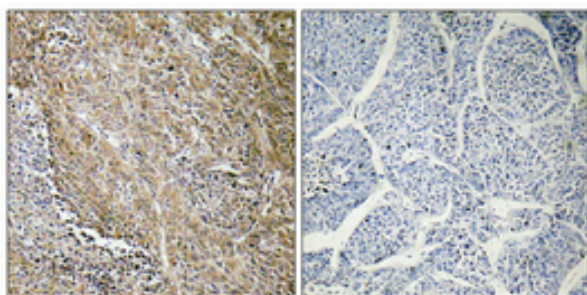
Products Images



Western Blot analysis of various cells using CTPS Polyclonal Antibody diluted at 1:500

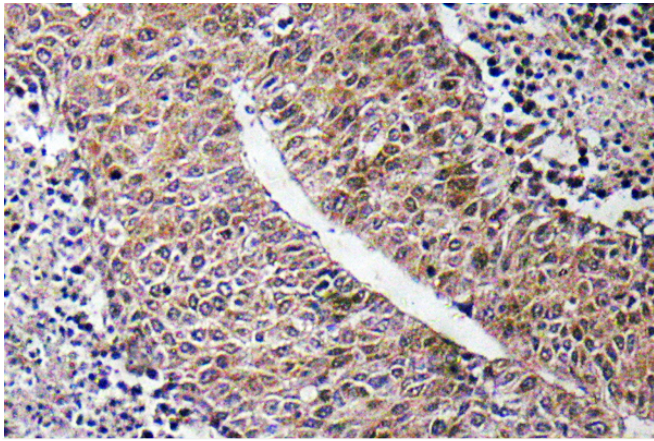


Western Blot analysis of HuvEc cells using CTPS Polyclonal Antibody diluted at 1:500

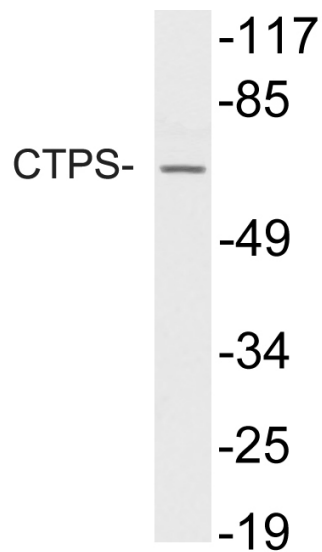


-embedded
at 1:100(4°
ure
trieval.
body was
pre-absorbed

by immunogen peptide.



Immunohistochemistry analysis of CTPS antibody in paraffin-embedded human liver carcinoma tissue.



Western blot analysis of lysate from HUVEC cells, using CTPS antibody.