



cPLA2-δ Polyclonal Antibody

Catalog No	YP-Ab-02552
Isotype	IgG
Reactivity	Human;Rat;Mouse;
Applications	IHC;IF;ELISA
Gene Name	PLA2G4D
Protein Name	Cytosolic phospholipase A2 delta
Immunogen	The antiserum was produced against synthesized peptide derived from human PLA2G4D. AA range:531-580
Specificity	cPLA2-δ Polyclonal Antibody detects endogenous levels of cPLA2-δ protein.
Formulation	Liquid in PBS containing 50% glycerol, 0.5% BSA and 0.02% sodium azide.
Source	Polyclonal, Rabbit,IgG
Purification	The antibody was affinity-purified from rabbit antiserum by affinity-chromatography using epitope-specific immunogen.
Dilution	IHC: 1/100 - 1/300. ELISA: 1/40000.. IF 1:50-200
Concentration	1 mg/ml
Purity	≥90%
Storage Stability	-20°C/1 year
Synonyms	PLA2G4D; Cytosolic phospholipase A2 delta; cPLA2-delta; Phospholipase A2 group IVD
Observed Band	
Cell Pathway	Cytoplasm, cytosol . Membrane ; Peripheral membrane protein ; Cytoplasmic side . Translocates to perinuclear membranes that may correspond to endoplasmic reticulum or Golgi in a calcium-dependent fashion. .
Tissue Specificity	Expressed in stratified squamous epithelia, such as those in skin and cervix, but not in other tissues (PubMed:14709560). Strongly expressed in the upper spinous layer of the psoriatic epidermis, expressed weakly and discontinuously in atopic dermatitis and mycosis fungoides, and not detected in the epidermis of normal skin (PubMed:14709560).
Function	catalytic activity:Phosphatidylcholine + H(2)O = 1-acylglycerophosphocholine + a carboxylate.,domain:The N-terminal C2 domain associates with lipid membranes and mediates its regulation by presenting the active site to its substrate in response to elevations of cytosolic Ca(2+).,enzyme regulation:Stimulated by cytosolic Ca(2+).,function:Calcium-dependent phospholipase A2 that selectively hydrolyzes glycerophospholipids in the sn-2 position. Not arachidonic acid-specific but has linoleic acid-specific activity. May play a role in inflammation in psoriatic lesions.,similarity:Contains 1 C2 domain.,similarity:Contains 1 PLA2c domain.,subcellular location:Translocates to membrane vesicles in a calcium-dependent fashion. Translocates to perinuclear regions upon ionomycin



stimulation.,tissue specificity:Expressed in stratified squamous epithelia, such as those in skin and cervix, but not in ot

Background

The phospholipase A2 enzyme family, including PLA2G4D, catalyze the hydrolysis of glycerophospholipids at the sn-2 position and then liberate free fatty acids and lysophospholipids (Chiba et al., 2004 [PubMed 14709560]).[supplied by OMIM, Jun 2009],

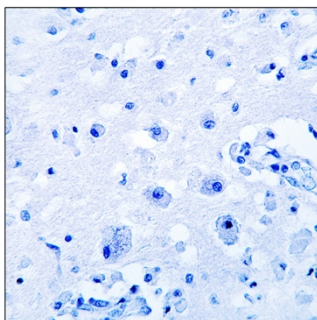
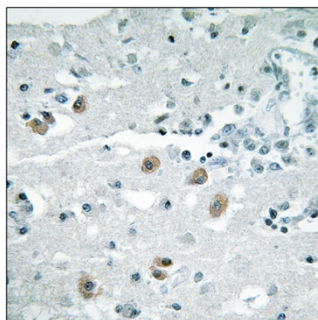
matters needing attention

Avoid repeated freezing and thawing!

Usage suggestions

This product can be used in immunological reaction related experiments. For more information, please consult technical personnel.

Products Images



Immunohistochemistry analysis of paraffin-embedded human brain, using PLA2G4D Antibody. The picture on the right is blocked with the synthesized peptide.