



COX7a2/3 Polyclonal Antibody

Catalog No	YP-Ab-02549
Isotype	IgG
Reactivity	Human;Mouse;Rat
Applications	WB;IHC;IF;ELISA
Gene Name	COX7A2/COX7A2P2
Protein Name	Cytochrome c oxidase subunit 7A2/3 mitochondrial
Immunogen	The antiserum was produced against synthesized peptide derived from human COX7S/A2. AA range:1-50
Specificity	COX7a2/3 Polyclonal Antibody detects endogenous levels of COX7a2/3 protein.
Formulation	Liquid in PBS containing 50% glycerol, 0.5% BSA and 0.02% sodium azide.
Source	Polyclonal, Rabbit,IgG
Purification	The antibody was affinity-purified from rabbit antiserum by affinity-chromatography using epitope-specific immunogen.
Dilution	WB: 1/500 - 1/2000. IHC: 1/100 - 1/300. ELISA: 1/10000.. IF 1:50-200
Concentration	1 mg/ml
Purity	≥90%
Storage Stability	-20°C/1 year
Synonyms	COX7A2P2; COX7A3; COX7AL2; COX7AP2; Putative cytochrome c oxidase subunit 7A3; mitochondrial; Cytochrome c oxidase subunit VIIa 3; COX7A2; COX7AL; Cytochrome c oxidase subunit 7A2, mitochondrial; Cytochrome c oxidase subunit VIIa-liver/hear
Observed Band	12kD
Cell Pathway	Mitochondrion inner membrane .
Tissue Specificity	
Function	
Background	Cytochrome c oxidase, the terminal component of the mitochondrial respiratory chain, catalyzes the electron transfer from reduced cytochrome c to oxygen. This component is a heteromeric complex consisting of three catalytic subunits encoded by mitochondrial genes, and multiple structural subunits encoded by nuclear genes. The mitochondrially-encoded subunits function in electron transfer, while the nuclear-encoded subunits may function in the regulation and assembly of the complex. This nuclear gene encodes polypeptide 2 (liver isoform) of subunit VIIa, with this polypeptide being present in both muscle and non-muscle tissues. In addition to polypeptide 2, subunit VIIa includes polypeptide 1 (muscle isoform),



which is present only in muscle tissues, and a related protein, which is present in all tissues. Alternative splicing results in multiple transcript variants. Related pseudogenes have been identified on chromosomes 4 and 14.

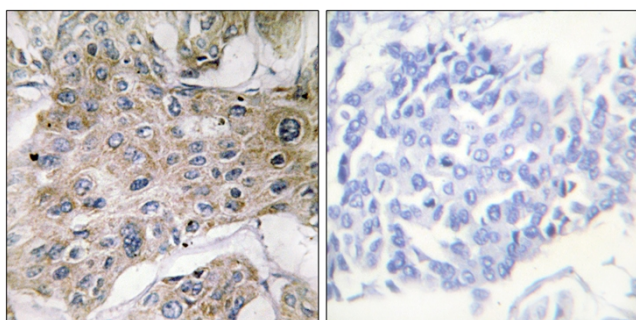
matters needing attention

Avoid repeated freezing and thawing!

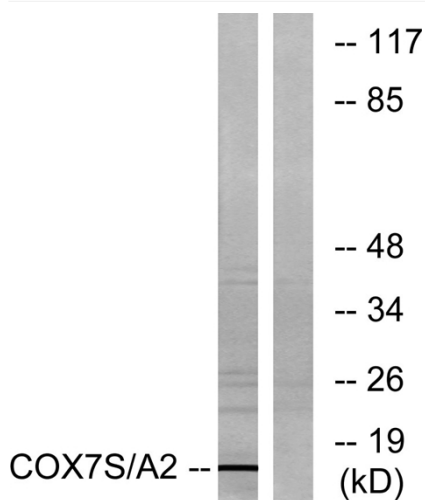
Usage suggestions

This product can be used in immunological reaction related experiments. For more information, please consult technical personnel.

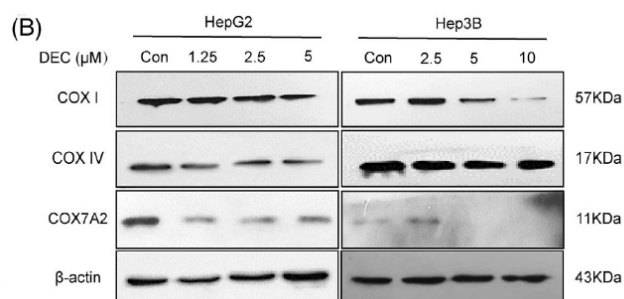
Products Images



Immunohistochemistry analysis of paraffin-embedded human breast carcinoma tissue, using COX7S/A2 Antibody. The picture on the right is blocked with the synthesized peptide.



Western blot analysis of lysates from rat heart cells, using COX7S/A2 Antibody. The lane on the right is blocked with the synthesized peptide.



The nature compound dehydrocrenatidine exerts potent antihepatocellular carcinoma by destroying mitochondrial complexes in vitro and in vivo 2022 Feb 02.

WB Human