

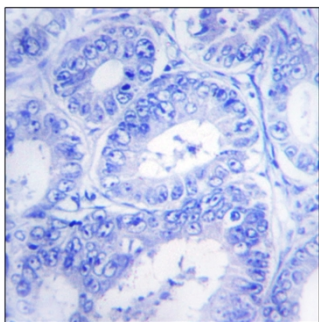
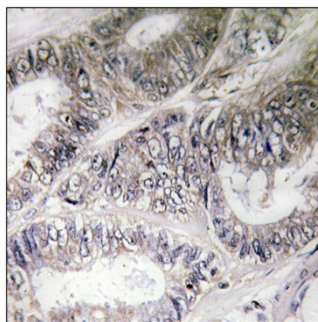


COX19 Polyclonal Antibody

Catalog No	YP-Ab-02542
Isotype	IgG
Reactivity	Human;Mouse
Applications	IHC;IF;ELISA
Gene Name	COX19
Protein Name	Cytochrome c oxidase assembly protein COX19
Immunogen	The antiserum was produced against synthesized peptide derived from human COX19. AA range:10-59
Specificity	COX19 Polyclonal Antibody detects endogenous levels of COX19 protein.
Formulation	Liquid in PBS containing 50% glycerol, 0.5% BSA and 0.02% sodium azide.
Source	Polyclonal, Rabbit,IgG
Purification	The antibody was affinity-purified from rabbit antiserum by affinity-chromatography using epitope-specific immunogen.
Dilution	IHC: 1/100 - 1/300. ELISA: 1/20000.. IF 1:50-200
Concentration	1 mg/ml
Purity	≥90%
Storage Stability	-20°C/1 year
Synonyms	COX19; Cytochrome c oxidase assembly protein COX19; hCOX19
Observed Band	
Cell Pathway	Cytoplasm, cytosol . Mitochondrion intermembrane space . Mitochondrion . Partitions between mitochondria and the cytosol in a copper-dependent manner. Enriched in the cytosol when intracellular copper concentrations are elevated. .
Tissue Specificity	Ubiquitously expressed. Highly expressed in skeletal muscle.
Function	function:May be required for the assembly of mitochondrial cytochrome c oxidase.,similarity:Belongs to the COX19 family.,similarity:Contains 1 CHCH domain.,tissue specificity:Ubiquitously expressed. Highly expressed in skeletal muscle.,
Background	COX19 encodes a cytochrome c oxidase (COX)-assembly protein. The S. cerevisiae Cox19 protein may play a role in metal transport to the mitochondrial intermembrane space and assembly of complex IV of the mitochondrial respiratory chain (Sacconi et al., 2005 [PubMed 16212937]).[supplied by OMIM, Mar 2008],
matters needing attention	Avoid repeated freezing and thawing!

**Usage suggestions**

This product can be used in immunological reaction related experiments. For more information, please consult technical personnel.

Products Images

Immunohistochemistry analysis of paraffin-embedded human colon carcinoma tissue, using COX19 Antibody. The picture on the right is blocked with the synthesized peptide.