



# CHSY1 Polyclonal Antibody

<b>Catalog No</b>	YP-Ab-02535
<b>Isotype</b>	IgG
<b>Reactivity</b>	Human;Mouse
<b>Applications</b>	WB;IHC;IF;ELISA
<b>Gene Name</b>	CHSY1
<b>Protein Name</b>	Chondroitin sulfate synthase 1
<b>Immunogen</b>	The antiserum was produced against synthesized peptide derived from human CHSY1. AA range:341-390
<b>Specificity</b>	CHSY1 Polyclonal Antibody detects endogenous levels of CHSY1 protein.
<b>Formulation</b>	Liquid in PBS containing 50% glycerol, 0.5% BSA and 0.02% sodium azide.
<b>Source</b>	Polyclonal, Rabbit,IgG
<b>Purification</b>	The antibody was affinity-purified from rabbit antiserum by affinity-chromatography using epitope-specific immunogen.
<b>Dilution</b>	WB: 1/500 - 1/2000. IHC: 1/100 - 1/300. ELISA: 1/10000.. IF 1:50-200
<b>Concentration</b>	1 mg/ml
<b>Purity</b>	≥90%
<b>Storage Stability</b>	-20°C/1 year
<b>Synonyms</b>	CHSY1; CHSY; CSS1; KIAA0990; Chondroitin sulfate synthase 1; Chondroitin glucuronyltransferase 1; Chondroitin synthase 1; ChSy-1; Glucuronosyl-N-acetylgalactosaminyl-proteoglycan 4-beta-N-acetylgalactosaminyltransferase 1; N-acetylgalactosa
<b>Observed Band</b>	91kD
<b>Cell Pathway</b>	Golgi apparatus, Golgi stack membrane ; Single-pass type II membrane protein . Secreted .
<b>Tissue Specificity</b>	Ubiquitous, with the highest levels in placenta. Detected at low levels in brain, heart, skeletal muscle, colon, thymus, spleen, kidney, liver, adrenal gland, mammary gland, stomach, small intestine, lung and peripheral blood leukocytes.
<b>Function</b>	catalytic activity:UDP-alpha-D-glucuronate + N-acetyl-beta-D-galactosaminyl-(1->4)-beta-D-glucuronosyl-proteoglycan = UDP + beta-D-glucuronosyl-(1->3)-N-acetyl-beta-D-galactosaminyl-(1->4)-beta-D-glucuronosyl-proteoglycan.,catalytic activity:UDP-N-acetyl-D-galactosamine + beta-D-glucuronosyl-(1->3)-N-acetyl-beta-D-galactosaminyl-proteoglycan = UDP + N-acetyl-beta-D-galactosaminyl-(1->4)-beta-D-glucuronosyl-(1->3)-N-acetyl-beta-D-galactosaminyl-proteoglycan.,cofactor:Divalent cations. Highest activities are measured with cobalt, manganese and cadmium.,function:Has both



beta-1,3-glucuronic acid and beta-1,4-N-acetylgalactosamine transferase activity. Transfers glucuronic acid (GlcUA) from UDP-GlcUA and N-acetylgalactosamine (GalNAc) from UDP-GalNAc to the non-reducing end of the elongating chondroitin polymer.,online information:Chondroitin sulfate synthase 1,online information:GlycoGene d

**Background**

This gene encodes a member of the chondroitin N-acetylgalactosaminyltransferase family. These enzymes possess dual glucuronyltransferase and galactosaminyltransferase activity and play critical roles in the biosynthesis of chondroitin sulfate, a glycosaminoglycan involved in many biological processes including cell proliferation and morphogenesis. Decreased expression of this gene may play a role in colorectal cancer, and mutations in this gene are a cause of temtamy preaxial brachydactyly syndrome. [provided by RefSeq, Dec 2011],

**matters needing attention**

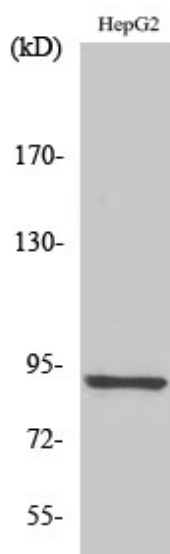
Avoid repeated freezing and thawing!

**Usage suggestions**

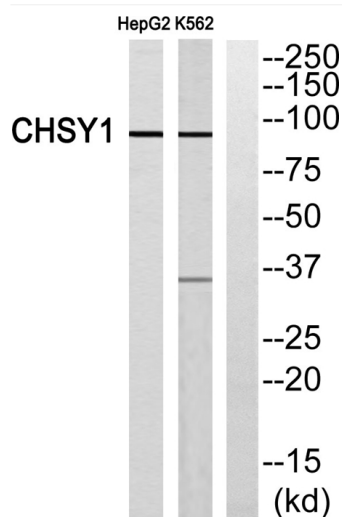
This product can be used in immunological reaction related experiments. For more information, please consult technical personnel.



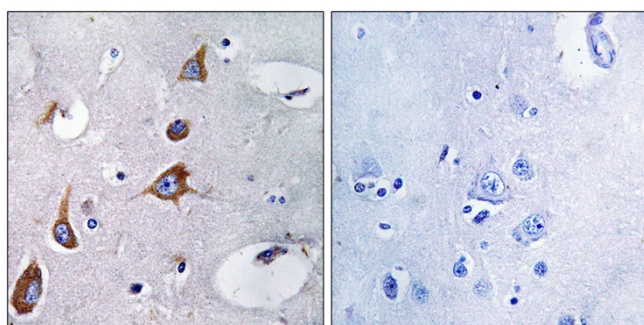
## Products Images



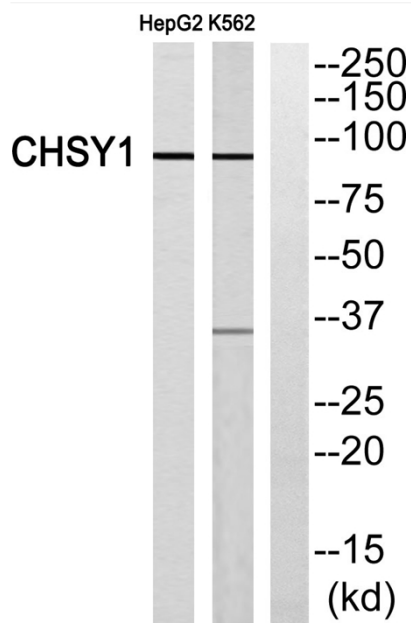
Western Blot analysis of various cells using CHSY1 Polyclonal Antibody



Western blot analysis of CHSY1 Antibody. The lane on the right is blocked with the CHSY1 peptide.



Immunohistochemistry analysis of paraffin-embedded human brain, using CHSY1 Antibody. The lane on the right is blocked with the CHSY1 peptide.



Western blot analysis of the lysates from HepG2 cells using CHSY1 antibody.