



# CEL Polyclonal Antibody

<b>Catalog No</b>	YP-Ab-02534
<b>Isotype</b>	IgG
<b>Reactivity</b>	Human;Rat;Mouse;
<b>Applications</b>	IHC;IF;ELISA
<b>Gene Name</b>	CEL
<b>Protein Name</b>	Bile salt-activated lipase
<b>Immunogen</b>	Synthesized peptide derived from the Internal region of human CEL.
<b>Specificity</b>	CEL Polyclonal Antibody detects endogenous levels of CEL protein.
<b>Formulation</b>	Liquid in PBS containing 50% glycerol, 0.5% BSA and 0.02% sodium azide.
<b>Source</b>	Polyclonal, Rabbit,IgG
<b>Purification</b>	The antibody was affinity-purified from rabbit antiserum by affinity-chromatography using epitope-specific immunogen.
<b>Dilution</b>	IHC: 1/100 - 1/300. ELISA: 1/40000.. IF 1:50-200
<b>Concentration</b>	1 mg/ml
<b>Purity</b>	≥90%
<b>Storage Stability</b>	-20°C/1 year
<b>Synonyms</b>	CEL; BAL; Bile salt-activated lipase; BAL; Bile salt-stimulated lipase; BSSL; Bucelipase; Carboxyl ester lipase; Cholesterol esterase; Pancreatic lysophospholipase; Sterol esterase
<b>Observed Band</b>	
<b>Cell Pathway</b>	Secreted .
<b>Tissue Specificity</b>	Mammary gland and pancreas. Detected in pancreatic and duodenal juice (at protein level) (PubMed:21784842). Expressed by eosinophils.
<b>Function</b>	catalytic activity:A steryl ester + H(2)O = a sterol + a fatty acid.,catalytic activity:Triacylglycerol + H(2)O = diacylglycerol + a carboxylate.,disease:Defects in CEL are a cause of maturity-onset diabetes of the young type 8 with exocrine dysfunction (MODY8) [MIM:609812]; also known as diabetes and pancreatic exocrine dysfunction (DPED). MODY [MIM:606391] is an autosomal dominant form of diabetes mellitus. The pancreas serves both endocrine and exocrine functions. The endocrine cells are found in the islets of Langerhans. They synthesize insulin and other hormones, and are involved in the pathogenesis of diabetes mellitus. The exocrine cells produce bicarbonate and digestive enzymes and are involved in the pathogenesis of pancreatic malabsorption. The localization of the islets within exocrine pancreatic tissue is suggestive of an interdependency and cross-talk between these two cell



## Background

The protein encoded by this gene is a glycoprotein secreted from the pancreas into the digestive tract and from the lactating mammary gland into human milk. The physiological role of this protein is in cholesterol and lipid-soluble vitamin ester hydrolysis and absorption. This encoded protein promotes large chylomicron production in the intestine. Also its presence in plasma suggests its interactions with cholesterol and oxidized lipoproteins to modulate the progression of atherosclerosis. In pancreatic tumoral cells, this encoded protein is thought to be sequestered within the Golgi compartment and is probably not secreted. This gene contains a variable number of tandem repeat (VNTR) polymorphism in the coding region that may influence the function of the encoded protein. [provided by RefSeq, Jul 2008],

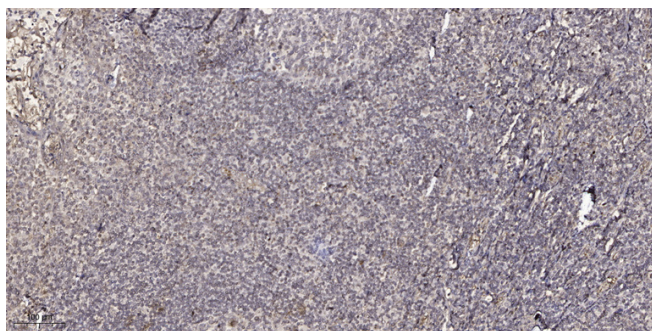
## matters needing attention

Avoid repeated freezing and thawing!

## Usage suggestions

This product can be used in immunological reaction related experiments. For more information, please consult technical personnel.

## Products Images



Immunohistochemical analysis of paraffin-embedded human tonsil. 1, Antibody was diluted at 1:200(4° overnight). 2, Tris-EDTA,pH9.0 was used for antigen retrieval. 3,Secondary antibody was diluted at 1:200(room temperature, 30min).