



Carbonyl Reductase 1 Polyclonal Antibody

Catalog No	YP-Ab-02525
Isotype	IgG
Reactivity	Human;Rat;Mouse;
Applications	WB;IHC;IF;ELISA
Gene Name	CBR1
Protein Name	Carbonyl reductase [NADPH] 1
Immunogen	The antiserum was produced against synthesized peptide derived from human CBR1. AA range:181-230
Specificity	Carbonyl Reductase 1 Polyclonal Antibody detects endogenous levels of Carbonyl Reductase 1 protein.
Formulation	Liquid in PBS containing 50% glycerol, 0.5% BSA and 0.02% sodium azide.
Source	Polyclonal, Rabbit,IgG
Purification	The antibody was affinity-purified from rabbit antiserum by affinity-chromatography using epitope-specific immunogen.
Dilution	WB: 1/500 - 1/2000. IHC: 1/100 - 1/300. ELISA: 1/40000.. IF 1:50-200
Concentration	1 mg/ml
Purity	≥90%
Storage Stability	-20°C/1 year
Synonyms	CBR1; CBR; CRN; Carbonyl reductase [NADPH] 1; 15-hydroxyprostaglandin dehydrogenase [NADP(+)]; NADPH-dependent carbonyl reductase 1; Prostaglandin 9-ketoreductase; Prostaglandin-E(2) 9-reductase
Observed Band	32kD
Cell Pathway	Cytoplasm .
Tissue Specificity	Expressed in kidney (at protein level).
Function	catalytic activity:(13E)-(15S)-11-alpha,15-dihydroxy-9-oxoprost-13-enoate + NADP(+) = (13E)-11-alpha-hydroxy-9,15-dioxoprost-13-enoate + NADPH.,catalytic activity:(5Z,13E)-(15S)-9-alpha,11-alpha,15-trihydroxyprosta-5,13-dienoate + NADP(+) = (5Z,13E)-(15S)-11-alpha,15-dihydroxy-9-oxoprost-5,13-dienoate + NADPH.,catalytic activity:R-CHOH-R' + NADP(+) = R-CO-R' + NADPH.,function:Catalyzes the reduction of a wide variety of carbonyl compounds including the antitumor anthracycline antibiotics. Can convert prostaglandin E2 to prostaglandin F2-alpha.,similarity:Belongs to the short-chain dehydrogenases/reductases (SDR) family.,subunit:Monomer.,
Background	The protein encoded by this gene belongs to the short-chain dehydrogenases/reductases (SDR) family, which function as NADPH-dependent



oxidoreductases having wide specificity for carbonyl compounds, such as quinones, prostaglandins, and various xenobiotics. Alternatively spliced transcript variants have been found for this gene. [provided by RefSeq, Nov 2013],

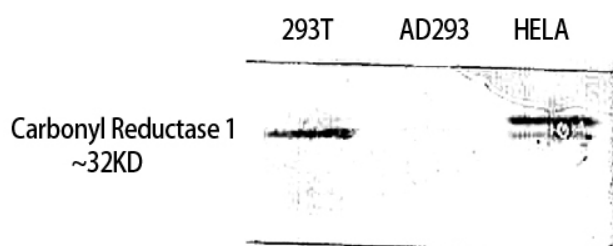
matters needing attention

Avoid repeated freezing and thawing!

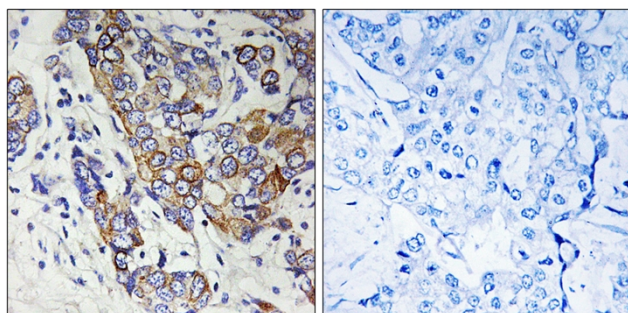
Usage suggestions

This product can be used in immunological reaction related experiments. For more information, please consult technical personnel.

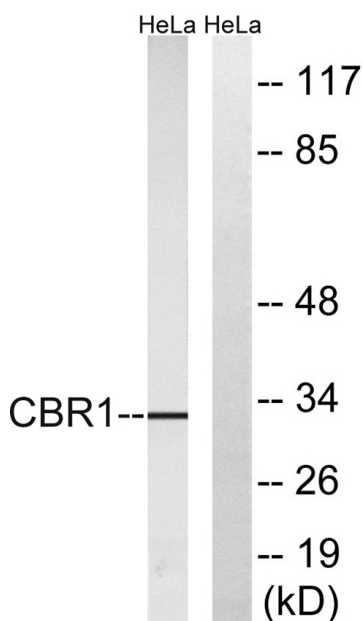
Products Images



Western Blot analysis of 293T HELA using Carbonyl Reductase 1 Polyclonal Antibody. Antibody was diluted at 1:1000



Immunohistochemistry analysis of paraffin-embedded human breast carcinoma tissue, using CBR1 Antibody. The picture on the right is blocked with the synthesized peptide.



Western blot analysis of lysates from HeLa cells, using CBR1 Antibody. The lane on the right is blocked with the synthesized peptide.

