



# Calpain 2 Polyclonal Antibody

<b>Catalog No</b>	YP-Ab-02524
<b>Isotype</b>	IgG
<b>Reactivity</b>	Human;Mouse;Rat
<b>Applications</b>	IHC;IF;ELISA
<b>Gene Name</b>	CAPN2
<b>Protein Name</b>	Calpain-2 catalytic subunit
<b>Immunogen</b>	The antiserum was produced against synthesized peptide derived from human Calpain 2. AA range:305-354
<b>Specificity</b>	Calpain 2 Polyclonal Antibody detects endogenous levels of Calpain 2 protein.
<b>Formulation</b>	Liquid in PBS containing 50% glycerol, 0.5% BSA and 0.02% sodium azide.
<b>Source</b>	Polyclonal, Rabbit,IgG
<b>Purification</b>	The antibody was affinity-purified from rabbit antiserum by affinity-chromatography using epitope-specific immunogen.
<b>Dilution</b>	IHC: 1/100 - 1/300. ELISA: 1/40000.. IF 1:50-200
<b>Concentration</b>	1 mg/ml
<b>Purity</b>	≥90%
<b>Storage Stability</b>	-20°C/1 year
<b>Synonyms</b>	CAPN2; CANPL2; Calpain-2 catalytic subunit; Calcium-activated neutral proteinase 2; CANP 2; Calpain M-type; Calpain large polypeptide L2; Calpain-2 large subunit; Millimolar-calpain; M-calpain
<b>Observed Band</b>	
<b>Cell Pathway</b>	Cytoplasm. Cell membrane. Translocates to the plasma membrane upon Ca(2+) binding.
<b>Tissue Specificity</b>	Ubiquitous.
<b>Function</b>	catalytic activity:Broad endopeptidase specificity.,cofactor:Binds 3 calcium ions.,enzyme regulation:Activated by 200-1000 micromolar concentrations of calcium and inhibited by calpastatin.,function:Calcium-regulated non-lysosomal thiol-protease which catalyze limited proteolysis of substrates involved in cytoskeletal remodeling and signal transduction.,sequence caution:Contaminating sequence. Potential poly-A sequence.,similarity:Belongs to the peptidase C2 family.,similarity:Contains 1 calpain catalytic domain.,similarity:Contains 3 EF-hand domains.,subcellular location:Translocates to the plasma membrane upon Ca(2+) binding.,subunit:Forms a heterodimer with a small (regulatory) subunit (CAPNS1).,tissue specificity:Ubiquitous.,
<b>Background</b>	The calpains, calcium-activated neutral proteases, are nonlysosomal, intracellular cysteine proteases. The mammalian calpains include ubiquitous,



stomach-specific, and muscle-specific proteins. The ubiquitous enzymes consist of heterodimers with distinct large, catalytic subunits associated with a common small, regulatory subunit. This gene encodes the large subunit of the ubiquitous enzyme, calpain 2. Multiple heterogeneous transcriptional start sites in the 5' UTR have been reported. Two transcript variants encoding different isoforms have been found for this gene. [provided by RefSeq, Mar 2009],

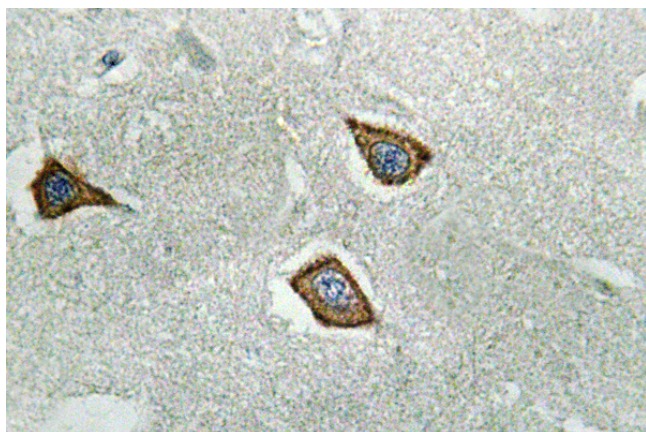
**matters needing attention**

Avoid repeated freezing and thawing!

**Usage suggestions**

This product can be used in immunological reaction related experiments. For more information, please consult technical personnel.

## Products Images



Immunohistochemistry analysis of Calpain2 antibody in paraffin-embedded human brain tissue.