



# BCKDK Polyclonal Antibody

<b>Catalog No</b>	YP-Ab-02508
<b>Isotype</b>	IgG
<b>Reactivity</b>	Human;Mouse;Rat
<b>Applications</b>	WB;IHC;IF;ELISA
<b>Gene Name</b>	BCKDK
<b>Protein Name</b>	[3-methyl-2-oxobutanoate dehydrogenase [lipoamide]] kinase mitochondrial
<b>Immunogen</b>	The antiserum was produced against synthesized peptide derived from human BCKD . AA range:11-60
<b>Specificity</b>	BCKDK Polyclonal Antibody detects endogenous levels of BCKDK protein.
<b>Formulation</b>	Liquid in PBS containing 50% glycerol, 0.5% BSA and 0.02% sodium azide.
<b>Source</b>	Polyclonal, Rabbit,IgG
<b>Purification</b>	The antibody was affinity-purified from rabbit antiserum by affinity-chromatography using epitope-specific immunogen.
<b>Dilution</b>	Western Blot: 1/500 - 1/2000. Immunohistochemistry: 1/100 - 1/300. Immunofluorescence: 1/200 - 1/1000. ELISA: 1/20000. Not yet tested in other applications.
<b>Concentration</b>	1 mg/ml
<b>Purity</b>	≥90%
<b>Storage Stability</b>	-20°C/1 year
<b>Synonyms</b>	BCKDK; [3-methyl-2-oxobutanoate dehydrogenase [lipoamide]] kinase; mitochondrial; Branched-chain alpha-ketoacid dehydrogenase kinase; BCKD-kinase; BCKDHKIN
<b>Observed Band</b>	46kD
<b>Cell Pathway</b>	Mitochondrion matrix. Mitochondrion .
<b>Tissue Specificity</b>	Ubiquitous.
<b>Function</b>	catalytic activity:ATP + [3-methyl-2-oxobutanoate dehydrogenase (acetyl-transferring)] = ADP + [3-methyl-2-oxobutanoate dehydrogenase (acetyl-transferring)] phosphate.;function:Catalyzes the phosphorylation and inactivation of the branched-chain alpha-ketoacid dehydrogenase complex, the key regulatory enzyme of the valine, leucine and isoleucine catabolic pathways. Key enzyme that regulate the activity state of the BCKD complex.;PTM:Autophosphorylated.;similarity:Belongs to the PDK/BCKDK protein kinase family.;similarity:Contains 1 histidine kinase domain.;subunit:Monomer.;tissue specificity:Ubiquitous.,
<b>Background</b>	The branched-chain alpha-ketoacid dehydrogenase complex (BCKD) is an important regulator of the valine, leucine, and isoleucine catabolic pathways. The



protein encoded by this gene is found in the mitochondrion, where it phosphorylates and inactivates BCKD. Several transcript variants encoding different isoforms have been found for this gene. [provided by RefSeq, Dec 2012],

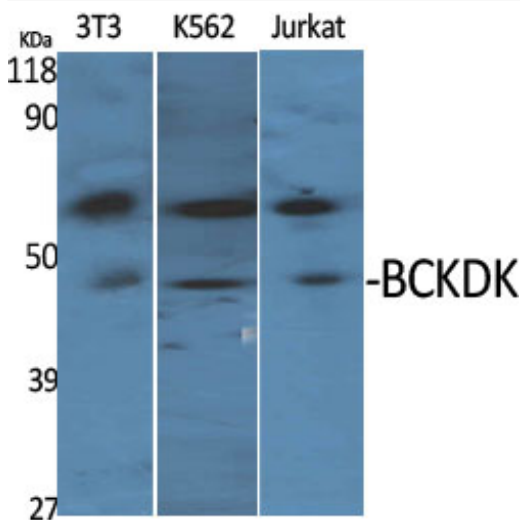
#### matters needing attention

Avoid repeated freezing and thawing!

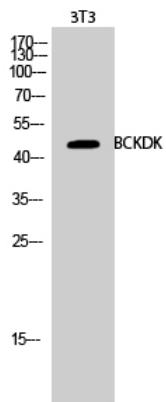
#### Usage suggestions

This product can be used in immunological reaction related experiments. For more information, please consult technical personnel.

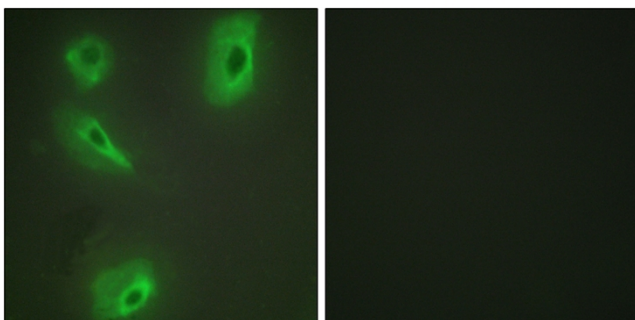
### Products Images



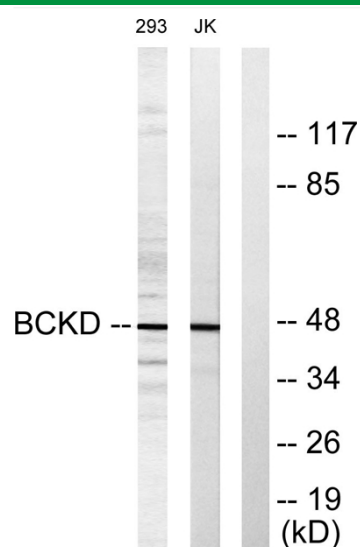
Western Blot analysis of various cells using BCKDK Polyclonal Antibody



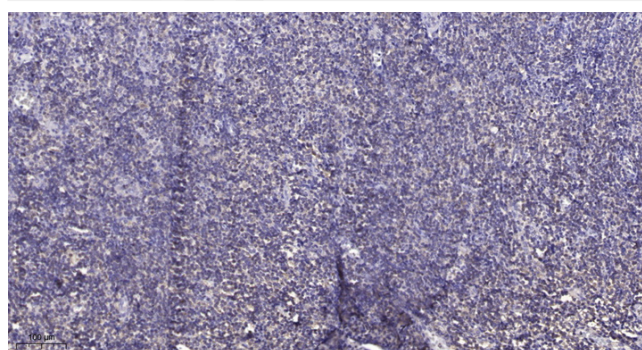
Western Blot analysis of 3T3 cells using BCKDK Polyclonal Antibody



Immunofluorescence analysis of HeLa cells, using BCKD Antibody . The picture on the right is blocked with the synthesized peptide.



Western blot analysis of lysates from Jurkat and 293 cells, using BCKD Antibody . The lane on the right is blocked with the synthesized peptide.



Immunohistochemical analysis of paraffin-embedded human tonsil. 1, Antibody was diluted at 1:200(4° overnight). 2, Tris-EDTA,pH9.0 was used for antigen retrieval. 3,Secondary antibody was diluted at 1:200(room temperature, 30min).