



ALDH3B1 Polyclonal Antibody

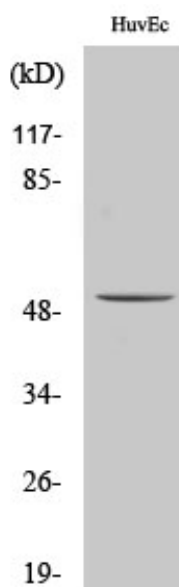
Catalog No	YP-Ab-02491
Isotype	IgG
Reactivity	Human;Rat;Mouse;
Applications	WB;IHC;IF;ELISA
Gene Name	ALDH3B1
Protein Name	Aldehyde dehydrogenase family 3 member B1
Immunogen	The antiserum was produced against synthesized peptide derived from human ALDH3B1. AA range:51-100
Specificity	ALDH3B1 Polyclonal Antibody detects endogenous levels of ALDH3B1 protein.
Formulation	Liquid in PBS containing 50% glycerol, 0.5% BSA and 0.02% sodium azide.
Source	Polyclonal, Rabbit,IgG
Purification	The antibody was affinity-purified from rabbit antiserum by affinity-chromatography using epitope-specific immunogen.
Dilution	WB: 1/500 - 1/2000. IHC: 1/100 - 1/300. ELISA: 1/40000.. IF 1:50-200
Concentration	1 mg/ml
Purity	≥90%
Storage Stability	-20°C/1 year
Synonyms	ALDH3B1; ALDH7; Aldehyde dehydrogenase family 3 member B1; Aldehyde dehydrogenase 7
Observed Band	52kD
Cell Pathway	Cell membrane ; Lipid-anchor . Primarily in the plasma membrane as well as in some punctate structures in the cytoplasm.
Tissue Specificity	Highest expression in kidney and lung.
Function	catalytic activity:An aldehyde + NAD(P)(+) + H(2)O = an acid + NAD(P)H.,pathway:Alcohol metabolism; ethanol degradation; acetate from ethanol: step 2/2.,similarity:Belongs to the aldehyde dehydrogenase family.,tissue specificity:Highest expression in kidney and lung.,
Background	This gene encodes a member of the aldehyde dehydrogenase protein family. Aldehyde dehydrogenases are a family of isozymes that may play a major role in the detoxification of aldehydes generated by alcohol metabolism and lipid peroxidation. The encoded protein is able to oxidize long-chain fatty aldehydes in vitro, and may play a role in protection from oxidative stress. Alternative splicing results in multiple transcript variants. [provided by RefSeq, Feb 2014],
matters needing attention	Avoid repeated freezing and thawing!



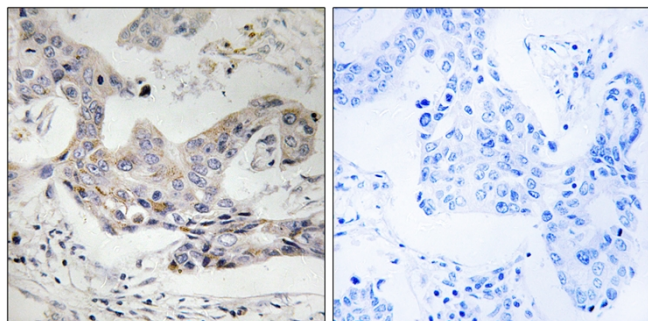
Usage suggestions

This product can be used in immunological reaction related experiments. For more information, please consult technical personnel.

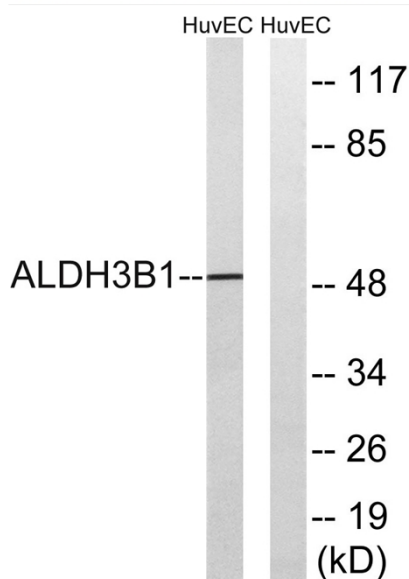
Products Images



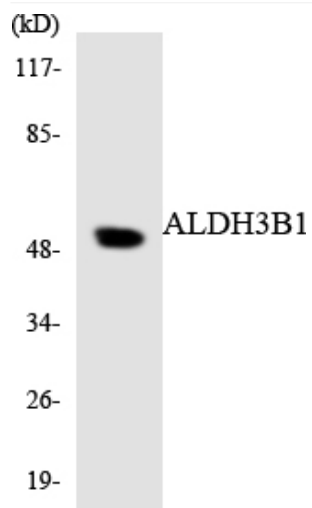
Western Blot analysis of various cells using ALDH3B1 Polyclonal Antibody diluted at 1:500



Immunohistochemistry analysis of paraffin-embedded human breast carcinoma tissue, using ALDH3B1 Antibody. The picture on the right is blocked with the synthesized peptide.



Western blot analysis of lysates from HUVEC cells, using ALDH3B1 Antibody. The lane on the right is blocked with the synthesized peptide.



Western blot analysis of the lysates from RAW264.7 cells using ALDH3B1 antibody.