



ADAMTS-17 Polyclonal Antibody

Catalog No	YP-Ab-02481
Isotype	IgG
Reactivity	Human;Mouse
Applications	IHC;IF;ELISA
Gene Name	ADAMTS17
Protein Name	A disintegrin and metalloproteinase with thrombospondin motifs 17
Immunogen	Synthesized peptide derived from ADAMTS-17 . at AA range: 150-230
Specificity	ADAMTS-17 Polyclonal Antibody detects endogenous levels of ADAMTS-17 protein.
Formulation	Liquid in PBS containing 50% glycerol, 0.5% BSA and 0.02% sodium azide.
Source	Polyclonal, Rabbit,IgG
Purification	The antibody was affinity-purified from rabbit antiserum by affinity-chromatography using epitope-specific immunogen.
Dilution	IHC: 1/100 - 1/300. ELISA: 1/20000.. IF 1:50-200
Concentration	1 mg/ml
Purity	≥90%
Storage Stability	-20°C/1 year
Synonyms	ADAMTS17; A disintegrin and metalloproteinase with thrombospondin motifs 17; ADAM-TS 17; ADAM-TS17; ADAMTS-17
Observed Band	
Cell Pathway	Secreted, extracellular space, extracellular matrix .
Tissue Specificity	Isoform 1 and isoform 2 are expressed at high levels in the lung, brain, whole eye and retina. Isoform 1 shows a weaker expression in the heart, kidney and skeletal muscle. Isoform 2 shows a weaker expression in the kidney, bone marrow and skeletal muscle. Isoform 1 and isoform 2 are expressed at high levels in the fetal heart, kidney, and whole eye, whereas a weak expression is seen in the fetal liver.
Function	domain:The conserved cysteine present in the cysteine-switch motif binds the catalytic zinc ion, thus inhibiting the enzyme. The dissociation of the cysteine from the zinc ion upon the activation-peptide release activates the enzyme.,PTM:The precursor is cleaved by a furin endopeptidase.,similarity:Contains 1 disintegrin domain.,similarity:Contains 1 peptidase M12B domain.,similarity:Contains 1 PLAC domain.,similarity:Contains 5 TSP type-1 domains.,tissue specificity:Expressed in fetal lung, in adult brain, prostate, and liver.,
Background	This gene encodes a member of the ADAMTS (a disintegrin and metalloproteinase with thrombospondin motifs) protein family. ADAMTS family members share several distinct protein modules, including a propeptide region, a metalloproteinase domain, a disintegrin-like domain, and a thrombospondin type 1



(TS) motif. Individual members of this family differ in the number of C-terminal TS motifs, and some have unique C-terminal domains. The encoded preproprotein is proteolytically processed to generate the mature protein, which may promote breast cancer cell growth and survival. Mutations in this gene are associated with a Weill-Marchesani-like syndrome, which is characterized by lenticular myopia, ectopia lentis, glaucoma, spherophakia, and short stature. [provided by RefSeq, May 2016],

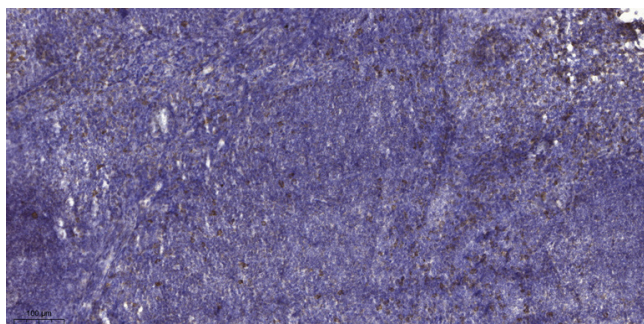
matters needing attention

Avoid repeated freezing and thawing!

Usage suggestions

This product can be used in immunological reaction related experiments. For more information, please consult technical personnel.

Products Images



Immunohistochemical analysis of paraffin-embedded human tonsil. 1, Antibody was diluted at 1:200(4° overnight). 2, Tris-EDTA,pH9.0 was used for antigen retrieval. 3,Secondary antibody was diluted at 1:200(room temperature, 30min).