



ACSS1 Polyclonal Antibody

Catalog No	YP-Ab-02475
Isotype	IgG
Reactivity	Human;Mouse
Applications	WB;IHC;IF;ELISA
Gene Name	ACSS1
Protein Name	Acetyl-coenzyme A synthetase 2-like mitochondrial
Immunogen	The antiserum was produced against synthesized peptide derived from human ACSS1. AA range:611-660
Specificity	ACSS1 Polyclonal Antibody detects endogenous levels of ACSS1 protein.
Formulation	Liquid in PBS containing 50% glycerol, 0.5% BSA and 0.02% sodium azide.
Source	Polyclonal, Rabbit,IgG
Purification	The antibody was affinity-purified from rabbit antiserum by affinity-chromatography using epitope-specific immunogen.
Dilution	WB: 1/500 - 1/2000. IHC: 1/100 - 1/300. ELISA: 1/40000.. IF 1:50-200
Concentration	1 mg/ml
Purity	≥90%
Storage Stability	-20°C/1 year
Synonyms	ACSS1; ACAS2L; KIAA1846; Acetyl-coenzyme A synthetase 2-like; mitochondrial; Acetate--CoA ligase 2; Acetyl-CoA synthetase 2; AceCS2; Acyl-CoA synthetase short-chain family member 1
Observed Band	75kD
Cell Pathway	Mitochondrion matrix .
Tissue Specificity	Amygdala,Brain,PCR rescued clones,Placenta,Spleen,Stomach,T
Function	catalytic activity:ATP + acetate + CoA = AMP + diphosphate + acetyl-CoA.,function:Converts acetate to acetyl-CoA so that it can be used for oxidation through the tricarboxylic cycle to produce ATP and CO(2).,sequence caution:Sequencing errors.,similarity:Belongs to the ATP-dependent AMP-binding enzyme family.,
Background	This gene encodes a mitochondrial acetyl-CoA synthetase enzyme. A similar protein in mice plays an important role in the tricarboxylic acid cycle by catalyzing the conversion of acetate to acetyl CoA. Alternatively spliced transcript variants encoding multiple isoforms have been observed for this gene. [provided by RefSeq, Nov 2011],



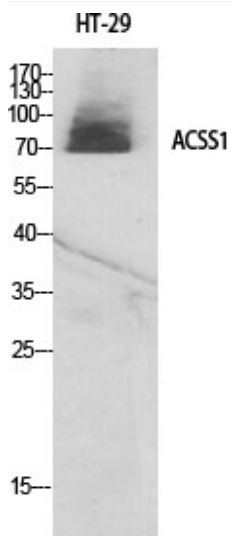
matters needing attention

Avoid repeated freezing and thawing!

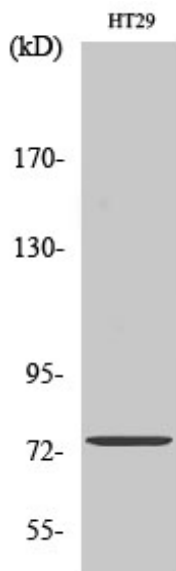
Usage suggestions

This product can be used in immunological reaction related experiments. For more information, please consult technical personnel.

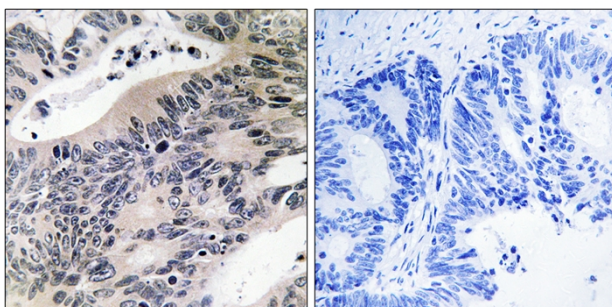
Products Images



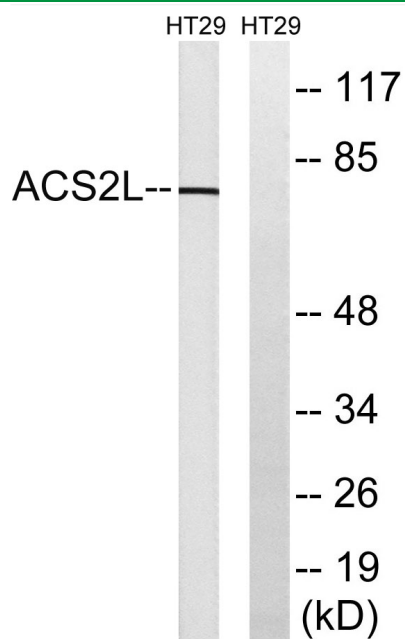
Western Blot analysis of various cells using ACSS1 Polyclonal Antibody



Western Blot analysis of HT29 cells using ACSS1 Polyclonal Antibody



Immunohistochemistry analysis of paraffin-embedded human colon carcinoma tissue, using ACSS1 Antibody. The picture on the right is blocked with the synthesized peptide.



Western blot analysis of lysates from HT-29 cells, using ACSS1 Antibody. The lane on the right is blocked with the synthesized peptide.