

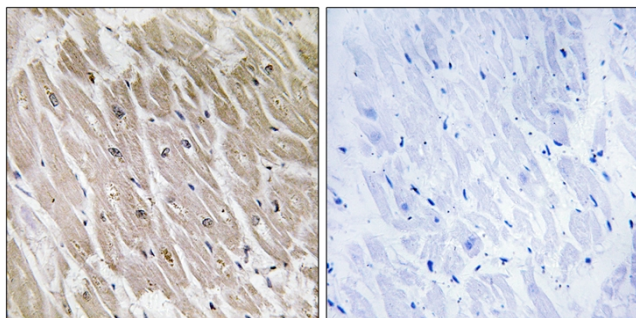


ACAD-10 Polyclonal Antibody

| | |
|----------------------------------|---|
| Catalog No | YP-Ab-02461 |
| Isotype | IgG |
| Reactivity | Human;Rat;Mouse; |
| Applications | IHC;IF;WB;ELISA |
| Gene Name | ACAD10 |
| Protein Name | Acyl-CoA dehydrogenase family member 10 |
| Immunogen | The antiserum was produced against synthesized peptide derived from human ACAD10. AA range:231-280 |
| Specificity | ACAD-10 Polyclonal Antibody detects endogenous levels of ACAD-10 protein. |
| Formulation | Liquid in PBS containing 50% glycerol, 0.5% BSA and 0.02% sodium azide. |
| Source | Polyclonal, Rabbit,IgG |
| Purification | The antibody was affinity-purified from rabbit antiserum by affinity-chromatography using epitope-specific immunogen. |
| Dilution | WB 1:500-2000 IHC: 1/100 - 1/300. ELISA: 1/40000.. IF 1:50-200 |
| Concentration | 1 mg/ml |
| Purity | ≥90% |
| Storage Stability | -20°C/1 year |
| Synonyms | ACAD10; Acyl-CoA dehydrogenase family member 10; ACAD-10 |
| Observed Band | 120kD |
| Cell Pathway | mitochondrion,mitochondrial matrix, |
| Tissue Specificity | Widely expressed with highest expression in fetal brain, followed by heart, muscle, kidney and adult brain. Expression levels varying from isoform to isoform. |
| Function | similarity:Belongs to the acyl-CoA dehydrogenase family.,tissue specificity:Widely expressed with higher expression in liver, kidney, pancreas and spleen., |
| Background | acyl-CoA dehydrogenase family member 10(ACAD10) Homo sapiens This gene encodes a member of the acyl-CoA dehydrogenase family of enzymes (ACADs), which participate in the beta-oxidation of fatty acids in mitochondria. The encoded enzyme contains a hydrolase domain at the N-terminal portion, a serine/threonine protein kinase catalytic domain in the central region, and a conserved ACAD domain at the C-terminus. Several alternatively spliced transcript variants of this gene have been described, but the full-length nature of some of these variants has not been determined. [provided by RefSeq, Nov 2008], |
| matters needing attention | Avoid repeated freezing and thawing! |

**Usage suggestions**

This product can be used in immunological reaction related experiments. For more information, please consult technical personnel.

Products Images

Immunohistochemistry analysis of paraffin-embedded human heart, using ACAD10 Antibody. The picture on the right is blocked with the synthesized peptide.