



# ABHD7 Polyclonal Antibody

<b>Catalog No</b>	YP-Ab-02458
<b>Isotype</b>	IgG
<b>Reactivity</b>	Human;Mouse
<b>Applications</b>	WB;ELISA
<b>Gene Name</b>	EPHX4
<b>Protein Name</b>	Epoxide hydrolase 4
<b>Immunogen</b>	The antiserum was produced against synthesized peptide derived from human ABHD7. AA range:101-150
<b>Specificity</b>	ABHD7 Polyclonal Antibody detects endogenous levels of ABHD7 protein.
<b>Formulation</b>	Liquid in PBS containing 50% glycerol, 0.5% BSA and 0.02% sodium azide.
<b>Source</b>	Polyclonal, Rabbit,IgG
<b>Purification</b>	The antibody was affinity-purified from rabbit antiserum by affinity-chromatography using epitope-specific immunogen.
<b>Dilution</b>	Western Blot: 1/500 - 1/2000. ELISA: 1/40000. Not yet tested in other applications.
<b>Concentration</b>	1 mg/ml
<b>Purity</b>	≥90%
<b>Storage Stability</b>	-20°C/1 year
<b>Synonyms</b>	EPHX4; ABHD7; EPXRP; Epoxide hydrolase 4; Abhydrolase domain-containing protein 7; Epoxide hydrolase-related protein
<b>Observed Band</b>	42kD
<b>Cell Pathway</b>	Membrane ; Single-pass type II membrane protein .
<b>Tissue Specificity</b>	
<b>Function</b>	
<b>Background</b>	The $\alpha/\beta$ hydrolase superfamily comprise diverse members that are involved in important biochemical processes and related to various diseases. They have unrelated sequences, various substrates, and different kinds of catalytic activities, yet they share the same canonical $\alpha/\beta$ hydrolase fold, which consists of an eight-stranded parallel $\alpha/\beta$ structure. They are also characterized by a catalytic triad composed of a histidine, an acid and a nucleophile. Members of this superfamily are often drug targets for treating diseases, such as diabetes, Alzheimer's disease, obesity and blood clotting disorders. The Ab hydrolase domain containing (ABHD) gene subfamily is comprised of 15 mostly uncharacterized members, most of which utilize a serine nucleophile to form the G-X-S-X-G nucleophile elbow. ABHD7 is a 362 amino acid single-pass type II membrane protein that belongs to the AB hydrolase superfamily and the Epoxide



hydrolase family.

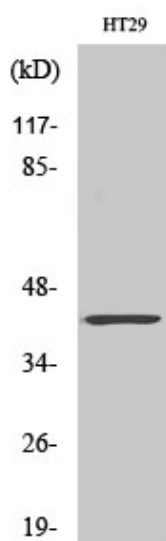
**matters needing attention**

Avoid repeated freezing and thawing!

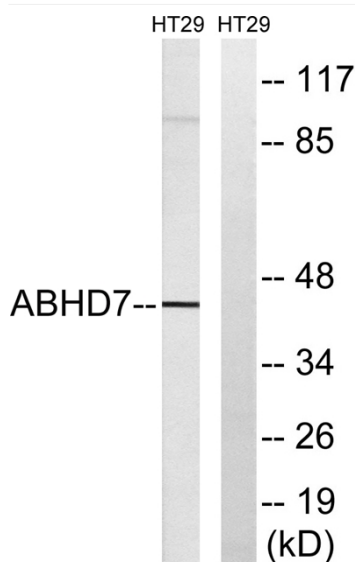
**Usage suggestions**

This product can be used in immunological reaction related experiments. For more information, please consult technical personnel.

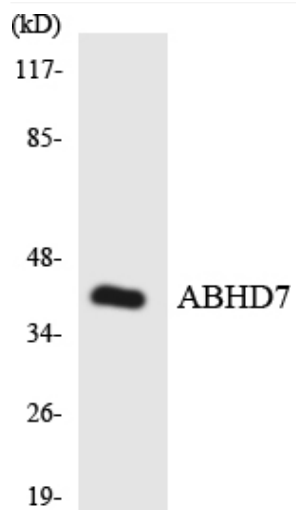
**Products Images**



Western Blot analysis of various cells using ABHD7 Polyclonal Antibody diluted at 1:500



Western blot analysis of lysates from HT-29 cells, using ABHD7 Antibody. The lane on the right is blocked with the synthesized peptide.



Western blot analysis of the lysates from HeLa cells using ABHD7 antibody.